

T.O. 21M-HGM25A-6-1WC-1PE

SECTION II

WWW.CHROMEHOOVES.NET  
LUBRICATION REQUIREMENTS

WWW.CHROMEHOOVES.NET

WWW.CHROMEHOOVES.NET

CARD NO. 2-2		WORK AREA 2B	PUBLICATION NO. AND DATE T.O. 21M-HGM25A-6-1WC-1PE 8 May 1964	
WORK UNIT CODE			CARD TIME 00:15	
SYS	SUB-SYS AND COMP	MISSILE SILO  INSPECTION NO. 90 DAY REQ	POWER <input checked="" type="checkbox"/> OFF <input type="checkbox"/> ON	
BA	91A	<p>LUBRICATE AS INDICATED ON BACK SIDE OF CARD USING TABLE FOR REFERENCE TO TYPE OF LUBRICANT.</p> <p><u>LAUNCHER PLATFORM LOCKING SYSTEM</u></p> <p>1. VERTICAL LOAD LOCKS (VAFB)</p> <p>a. (1) Roller shaft, total four places.</p> <p>b. (2) Indexing finger, spring, and plunger, total four places.</p>		

**LUBRICATION SYMBOLS**

SYMBOL	SPECIFICATION	TYPE OF LUBRICATION
MOS <sub>2</sub>	MIL-L-7866A	MOLYBDENUM DISULFIDE POWDER
KEL	F#3	OIL, GENERAL PURPOSE, LIGHT

**APPLICATION SYMBOLS**



HAND



OIL  
CAN

**ARROW SYMBOLS**

SPECIFIC LUBRICATION POINT



1



MOS<sub>2</sub>

1



KEL

2

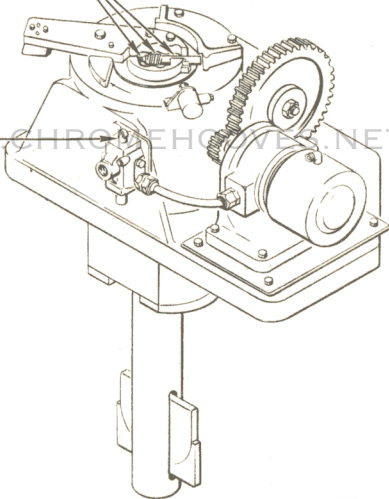


MOS<sub>2</sub>

2



KEL



WWW.CHROMEHOOVES.NET

**LAUNCHER PLATFORM LOCKING  
SYSTEM VERTICAL LOAD LOCKS**

CARD NO. 2-3		WORK AREA 2A	PUBLICATION NO. AND DATE T.O. 21M-HGM25A-6-1WC-1PE 8 May 1964	
WORK UNIT CODE				CARD TIME 00:20
SYS	SUB-SYS AND COMP	MISSILE SILO INSPECTION NO. 90 DAY REQ		POWER <input checked="" type="checkbox"/> OFF <input type="checkbox"/> ON
BB	290	<p>LUBRICATE AS INDICATED ON BACK SIDE OF CARD USING TABLE FOR REFERENCE TO TYPE OF LUBRICANT.</p> <p><u>CRIB AND ASSOCIATED EQUIPMENT</u></p> <p>1. LAUNCHER PLATFORM UPPER BUFFER MECHANISMS</p> <p>a. (1) Four hydraulic reservoirs until sight gage indicates approximately half-inch fluid level, total four places.</p> <p>b. (2) Four hydraulic cylinders (10A1A1CY129, 10A1A1CY136, 101A1A1CY138, 10A1A1CY131), total four places.</p> <p>c. (3) Eight guide rods, total eight places.</p>		

LUBRICATION SYMBOLS

SYMBOL	SPECIFICATION	TYPE OF LUBRICATION
M-1 MOS <sub>2</sub>	UCON M-1 MIL-L-7866A	HYDRAULIC FLUID, NON-FLAMMABLE MOLYBDENUM DISULFIDE, POWDER

APPLICATION SYMBOLS



BULK



OIL  
CAN

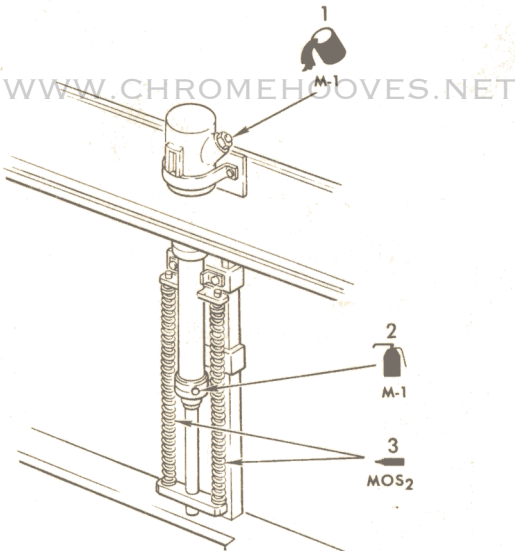


DRY



ARROW SYMBOLS

SPECIFIC LUBRICATION POINT



CRIB AND ASSOCIATED EQUIPMENT LAUNCHER  
PLATFORM UPPER BUFFER MECHANISMS

CARD NO. 2-4		WORK AREA 2B	PUBLICATION NO. AND DATE T.O. 21M-HGM25A-6-1WC-1PE 8 May 1964	
WORK UNIT CODE			CARD TIME 00:30	
SYS	SUB-SYS AND COMP	MISSILE SILO INSPECTION NO. 90 DAY REQ		POWER <input checked="" type="checkbox"/> OFF <input type="checkbox"/> ON
		LUBRICATE AS INDICATED ON BACK SIDE OF CARD USING TABLE FOR REFERENCE TO TYPE OF LUBRICANTS.		
BB	190	<u>LAUNCHER PLATFORM DRIVE SYSTEM</u>		
BB	19Q	1. CABLE TENSION EQUALIZER (VAFB)  a. Two hydraulic cylinders, total two places.		

**LUBRICATION SYMBOLS**

SYMBOL	SPECIFICATION	TYPE OF LUBRICATION
M-1	UCON M-1	HYDRAULIC FLUID, NON-FLAMMABLE

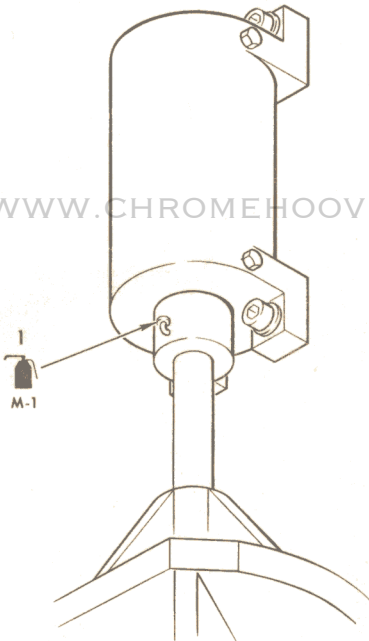
**APPLICATION SYMBOLS**



OIL  
CAN

**ARROW SYMBOLS**

→ SPECIFIC LUBRICATION POINT



**LAUNCHER PLATFORM DRIVE SYSTEM  
CABLE TENSION EQUALIZER (VAFB)**

CARD NO. 2-5		WORK AREA 2B	PUBLICATION NO. AND DATE T.O. 21M-HGM25A-6-1WC-1PE 8 May 1964	
WORK UNIT CODE				CARD TIME 00:20
SYS	SUB-SYS AND COMP	MISSILE SILO INSPECTION NO. 90 DAY REQ		POWER <input checked="" type="checkbox"/> OFF <input type="checkbox"/> ON
BB	170	<p>LUBRICATE AS INDICATED ON BACK SIDE OF CARD USING TABLE FOR REFERENCE TO TYPE OF LUBRICANT.</p> <p><u>DRIVE POWER UNIT AND CONTROL SKID ASSEMBLIES</u></p> <p>1. DRIVE AND CONTROLS</p> <p>a. (1) Hydrotarder reservoir, total one place.</p> <p>b. (2) High speed flexible shaft coupling, total two places.</p> <p>c. (3) Speed reducer (Falk unit), total one place.</p> <p>d. (4) Helical gears, total two places.</p> <p>e. (5) Drive pulley shaft bearings, total four places.</p> <p>f. (6) Front spring capsule lock, hydraulic cylinders (10A3-A1CY903 and 10A3A1CY907), total two places.</p> <p>g. (7) Hydrotarder flexible shaft coupling, total one place.</p> <p>h. (8) Pillow block bearings, total four places.</p> <p>i. (9) Hydrotarder bearings, total two places.</p>		



LUBRICATION SYMBOLS

SYMBOL	SPECIFICATION	TYPE OF LUBRICATION
M-1	UCON M-1	HYDRAULIC FLUID, NON-FLAMMABLE
OE	MIL-L-2104A GRADE 50	OIL, LUBRICATING, HEAVY DUTY
HOL	HALOCARBON 25-20M-5A	GREASE, GENERAL PURPOSE, HEAVY LOAD
GSG	MIL-G-7118	GREASE, AIRCRAFT GEAR AND ACTUATOR
KEL	KEL-F-90	GREASE, HEAVY DUTY

APPLICATION SYMBOLS



GREASE  
GUN



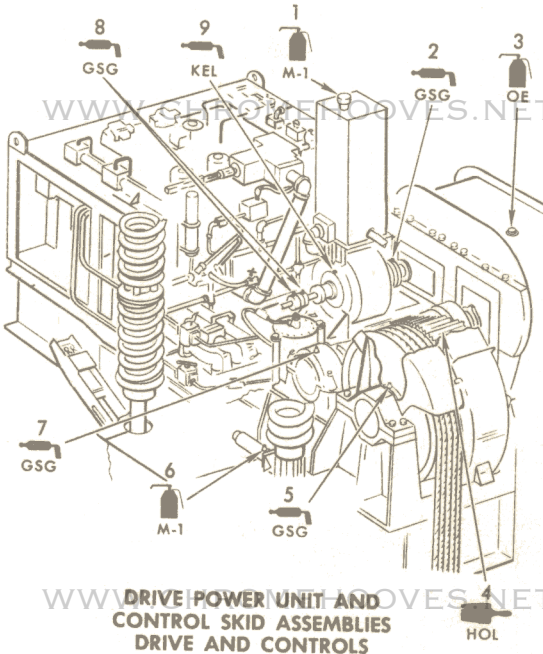
BRUSH



OIL  
CAN

ARROW SYMBOLS

→ SPECIFIC LUBRICATION POINT



CARD NO. 2-6		WORK AREA 2B	PUBLICATION NO. AND DATE T.O. 21M-HGM25A-6-1WC-1PE 8 May 1964
WORK UNIT CODE			CARD TIME 00:20
SYS	SUB-SYS AND COMP	MISSILE SILO  INSPECTION NO. 90 DAY REQ	POWER <input checked="" type="checkbox"/> OFF <input type="checkbox"/> ON
		<p>LUBRICATE AS INDICATED ON BACK SIDE OF CARD USING TABLE FOR REFERENCE TO TYPE OF LUBRICANT.</p> <p style="text-align: center;">Note</p> <p style="text-align: center;">The following tasks do not apply to VAFB.</p>	
BB	170	<u>LAUNCHER PLATFORM DRIVE SYSTEM</u>	
BB	17A	<p>1. DRIVE BASE TO SILO WALL REAR LOCKS.</p> <p>a. (1) Hydraulic cylinders (10A3 A1CY901 and 10A3A1CY902), total two places.</p> <p>b. (2) Lever pin, total two places.</p> <p>c. (3) Clevis pin, total two places.</p> <p>d. (4) Link pin, total two places.</p> <p>e. (5) Cap, total two places.</p>	

**LUBRICATION SYMBOLS**

SYMBOL	SPECIFICATION	TYPE OF LUBRICATION
M-1	UCON M-1	HYDRAULIC FLUID, NON-FLAMMABLE
HOL	HALOCARBON 25-20M-5A	GREASE, GENERAL PURPOSE, HEAVY LOAD

**APPLICATION SYMBOLS**



OIL  
CAN

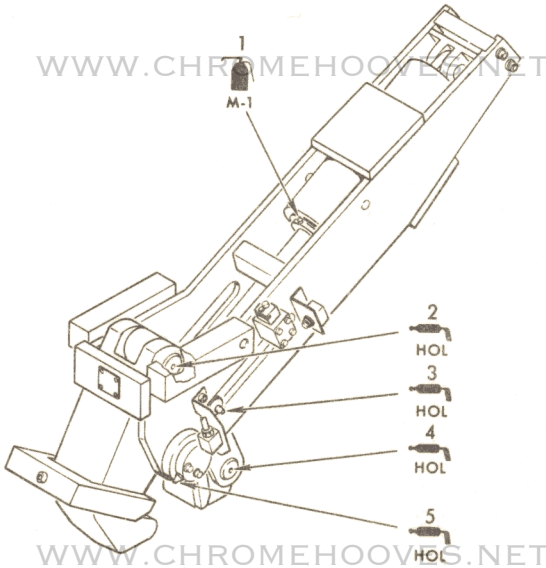


GREASE  
GUN

**ARROW SYMBOLS**



SPECIFIC LUBRICATION POINT



**LAUNCHER PLATFORM DRIVE SYSTEM  
DRIVE BASE TO SILO WALL REAR LOCKS**

CARD NO. 2-7		WORK AREA 2B	PUBLICATION NO. AND DATE T.O. 21M-HGM25A-6-1WC-1PE 8 May 1964	
WORK UNIT CODE			CARD TIME 00:15	
SYS	SUB-SYS AND COMP	MISSILE SILO INSPECTION NO. 90 DAY REQ		POWER <input checked="" type="checkbox"/> OFF <input type="checkbox"/> ON
<p>LUBRICATE AS INDICATED ON BACK SIDE OF CARD USING TABLE FOR REFERENCE TO TYPE OF LUBRICANT.</p> <p style="text-align: center;">Note</p> <p style="text-align: center;">The following tasks do not apply to VAFB.</p>				
BB	170	<u>LAUNCHER PLATFORM DRIVE SYSTEM</u>		
BB	17A	<p>1. COUNTERWEIGHT LIFTING AND LOCKING MECHANISM</p> <p>a. (1) Guide rods, total eight places.</p> <p>b. (2) Hydraulic cylinders (10A3 A1CY322 and 10A3A1CY329), total two places.</p>		

**LUBRICATION SYMBOLS**

SYMBOL	SPECIFICATION	TYPE OF LUBRICATION
M-1	UCON M-1	HYDRAULIC FLUID NON-FLAMMABLE

**APPLICATION SYMBOLS**

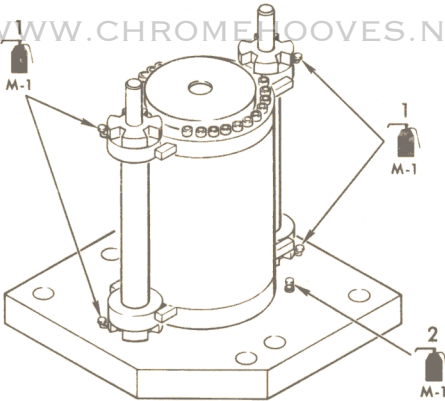


OIL  
CAN

**ARROW SYMBOLS**



SPECIFIC LUBRICATION POINT



**LAUNCHER PLATFORM DRIVE  
SYSTEM COUNTERWEIGHT LIFTING  
AND LOCKING MECHANISM**

CARD NO. 2-8		WORK AREA 2B	PUBLICATION NO. AND DATE T.O. 21M-HGM25A-6-1WC-1PE 8 May 1964	
WORK UNIT CODE			CARD TIME 00:20	
SYS	SUB-SYS AND COMP	MISSILE SILO INSPECTION NO. 90 DAY REQ		POWER <input checked="" type="checkbox"/> OFF <input type="checkbox"/> ON
BB	170	LUBRICATE AS INDICATED ON BACK SIDE OF CARD USING TABLE FOR REFERENCE TO TYPE OF LUBRICANT.		
BB	17A	<u>LAUNCHER PLATFORM DRIVE SYSTEM</u>  1. DRIVE AND CONTROLS  a. (1) Rack and pinion assem- blies, total six places.  b. (2) Hydraulic cylinder (10A3A1 CY264), total one place.  c. (3) Deceleration valve (10A3A1 VA260), total two places.  d. (4) Hydraulic cylinder (10A3A1 CY263), total one place.  e. (5) Back side of cam sword and cam sword bracket, total two places.  f. (6) Hydraulic cylinder (10A3A1 CY265), total two places.		

**LUBRICATION SYMBOLS**

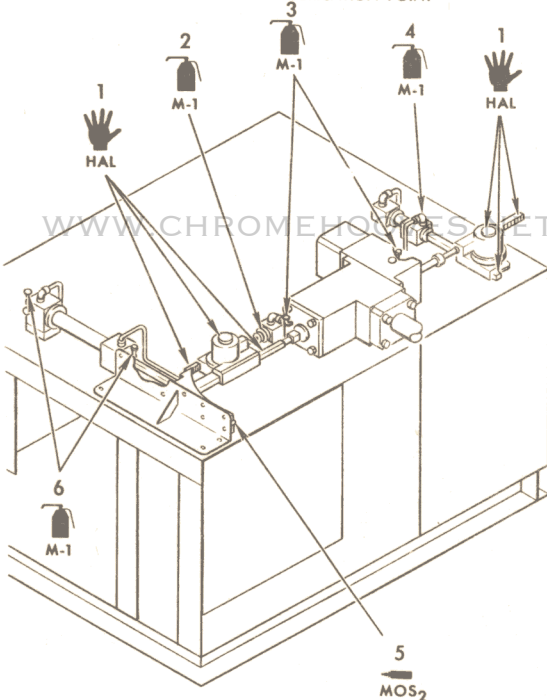
SYMBOL	SPECIFICATION	TYPE OF LUBRICATION
M-1	UCON M-1	HYDRAULIC FLUID, NON-FLAMMABLE
HAL	HALOCARBON 25-10M-5A	GREASE, GENERAL PURPOSE, NORMAL LOAD
MOS <sub>2</sub>	MIL-L-7866A	MOLYBDENUM DISULFIDE POWDER

**APPLICATION SYMBOLS**



**ARROW SYMBOLS**

→ SPECIFIC LUBRICATION POINT



WWW.CHROMEHOOVES.NET  
**LAUNCHER PLATFORM DRIVE SYSTEM  
 DRIVE AND CONTROLS**

CARD NO. 2-9		WORK AREA 2B	PUBLICATION NO. AND DATE T.O. 21M-HGM25A-6-1WC-1PE 8 May 1964
WORK UNIT CODE			CARD TIME 00:20
SYS	SUB-SYS AND COMP	MISSILE SILO  INSPECTION NO. 90 DAY REQ	POWER <input checked="" type="checkbox"/> OFF <input type="checkbox"/> ON
BB	170	<p>LUBRICATE AS INDICATED ON BACK SIDE OF CARD USING TABLE FOR REFERENCE TO TYPE OF LUBRICANT.</p> <p><u>LAUNCHER PLATFORM DRIVE SYSTEM</u></p> <ol style="list-style-type: none"> <li>1. COUNTERWEIGHT LIFTING AND LOCKING MECHANISM (VAFB) <ol style="list-style-type: none"> <li>a. (1) Drive pulley, total two places.</li> <li>b. (2) Speed reducer (Falk unit), total one place.</li> <li>c. (3) Hydrotarder reservoir, total one place.</li> <li>d. (4) Flexible coupling, total two places.</li> <li>e. (5) Hydraulic cylinders (counterweight lift) (10A3A1CY-322 and 10A3A1CY329), total two places.</li> <li>f. (6) Rack and pinion gear assembly, total four places.</li> <li>g. (7) Support fork slide assembly, total four places.</li> <li>h. (8) Pillow block bearing, total two places.</li> </ol> </li> </ol>	



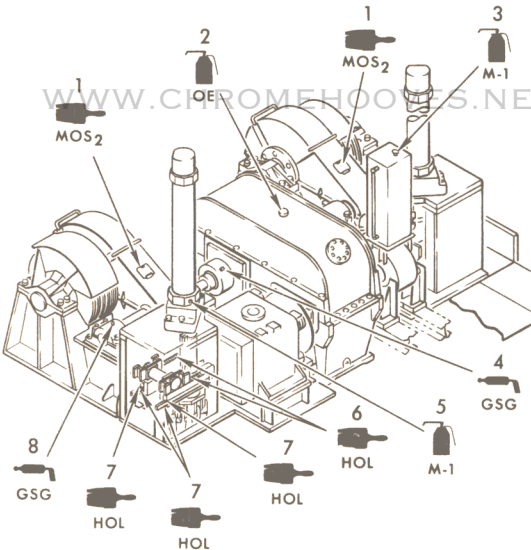
LUBRICATION SYMBOLS

SYMBOL	SPECIFICATION	TYPE OF LUBRICATION
M-1	UCON M-1	HYDRAULIC FLUID, NON-FLAMMABLE
OE	MIL-L-2104 GRADE 50	OIL, LUBRICATING, HEAVY DUTY
MOS <sub>2</sub>	MIL-L-7866A	MOLYBDENUM DISULFIDE POWDER
GSG	MIL-G-7118	GREASE, AIRCRAFT GEAR AND ACTUATOR
HOL	HALOCARBON 25-20M-5A	GREASE, GENERAL PURPOSE, HEAVY LOAD

APPLICATION SYMBOLS



ARROW SYMBOLS



LAUNCHER PLATFORM DRIVE SYSTEM  
COUNTERWEIGHT LIFTING AND  
LOCKING MECHANISM

CARD NO. 2-10		WORK AREA 2B	PUBLICATION NO. AND DATE T.O. 21M-HGM25A-6-1WC-1PE 8 May 1964	
WORK UNIT CODE			CARD TIME 00:20	
SYS	SUB-SYS AND COMP	MISSILE SILO INSPECTION NO. 90 DAY REQ		POWER <input checked="" type="checkbox"/> OFF <input type="checkbox"/> ON
		LUBRICATE AS INDICATED ON BACK SIDE OF CARD USING TABLE FOR REFERENCE TO TYPE OF LUBRICANT.		
BB	250	<u>CRIB LOCKING SYSTEM</u>		
BB	25A	1. INCLINED LOCK ASSEMBLY  a. (1) Four hydraulic cylinders (10A1ALCY1204, 10A1ALCY 1205, 10A1ALCY1206, 10A 1ALCY1207), total four places.		

**LUBRICATION SYMBOLS**

SYMBOL	SPECIFICATION	TYPE OF LUBRICATION
M-1	UCON M-1	HYDRAULIC FLUID, NON-FLAMMABLE

**APPLICATION SYMBOLS**

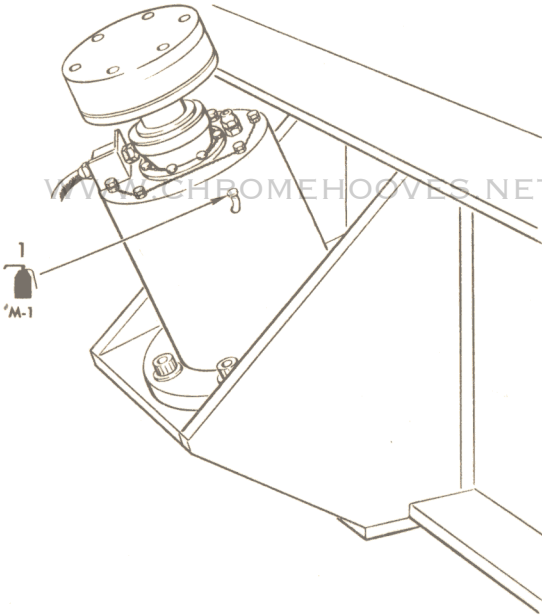


OIL  
CAN

**ARROW SYMBOLS**



SPECIFIC LUBRICATION POINT



WWW.CHROMEHOOVES.NET

**CRIB LOCKING SYSTEM  
INCLINED LOCK ASSEMBLY**

6035L44A

CARD NO. 2-11		WORK AREA 2B	PUBLICATION NO. AND DATE T.O. 21M-HGM25A-6-1WC-1PE 8 May 1964
WORK UNIT CODE			CARD TIME 00:30
SYS	SUB-SYS AND COMP	MISSILE SILO  INSPECTION NO 90 DAY REQ	POWER <input checked="" type="checkbox"/> OFF <input type="checkbox"/> ON
		LUBRICATE AS INDICATED ON BACK SIDE OF CARD USING TABLE FOR REFERENCE TO TYPE OF LUBRICATION	
BB	190	<u>LAUNCHER PLATFORM DRIVE SYSTEM</u>	
BB	19Q	1. CABLE TENSION EQUALIZERS (LAFB 724TH/725TH SQDN, EAFB, BAFB, LAFB, MHAFFB)  a. (1) Four guide rods, total eight places.  b. (2) Two hydraulic cylinders (10A1A1CY528, 10A1A1 CY529), total two places.	

**LUBRICATION SYMBOLS**

SYMBOL	SPECIFICATION	TYPE OF LUBRICATION
M-1	UCON M-1	HYDRAULIC FLUID, NON-FLAMMABLE

**APPLICATION SYMBOLS**

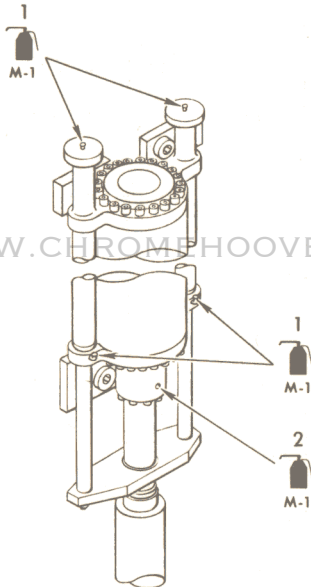


OIL  
CAN

**ARROW SYMBOLS**



SPECIFIC LUBRICATION POINT



WWW.CHROMEHOOVES.NET  
**LAUNCHER PLATFORM DRIVE SYSTEM  
 CABLE TENSION EQUALIZERS**

CARD NO. 2-12		WORK AREA 2B	PUBLICATION NO. AND DATE T.O. 21M-HGM25A-6-1WC-1PE 8 May 1964	
WORK UNIT CODE				CARD TIME 00:20
SYS	SUB-SYS AND COMP	MISSILE SILO INSPECTION NO. 90 DAY REQ		POWER <input checked="" type="checkbox"/> OFF <input type="checkbox"/> ON
		LUBRICATE AS INDICATED ON BACK SIDE OF CARD USING TABLE FOR REFERENCE TO TYPE OF LUBRICANT.		
BA	890	<u>LAUNCHER PLATFORM LOCKING SYSTEM</u>		
BA	89A	1. LATERAL LOAD LOCKS <p>a. (1) Four wedges, total four places.</p> <p>b. (2) Four hydraulic cylinders (10A1A1CY488, 10A1A1CY489, 10A1A1CY500, 10A1A1CY506), total four places.</p>		

**LUBRICATION SYMBOLS**

SYMBOL	SPECIFICATION	TYPE OF LUBRICATION
M-1	UCON M-1	HYDRAULIC FLUID, NON-FLAMMABLE
HOL	HALOCARBON 25-20M-5A	GREASE, GENERAL PURPOSE, HEAVY LOAD

**APPLICATION SYMBOLS**



BRUSH

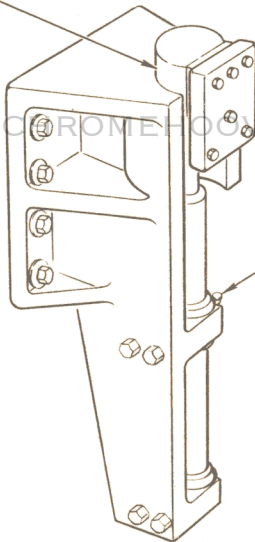


OIL  
CAN

**ARROW SYMBOLS**



SPECIFIC LUBRICATION POINT



WWW.CHROMEHOOVES.NET  
**LAUNCHER PLATFORM LOCKING SYSTEM  
 LATERAL LOAD LOCKS**

CARD NO. 2-13		WORK AREA 2C	PUBLICATION NO. AND DATE T.O. 21M-HGM25A-6-1WC-1PE 8 May 1964	
WORK UNIT CODE			CARD TIME 00:10	
SYS	SUB-SYS AND COMP	MISSILE SILO INSPECTION NO. 90 DAY REQ		POWER <input checked="" type="checkbox"/> OFF <input type="checkbox"/> ON
BB	170	LUBRICATE AS INDICATED ON BACK SIDE OF CARD USING TABLE FOR REFERENCE TO TYPE OF LUBRICANT.		
BB	17T 17V	<u>LAUNCHER PLATFORM DRIVE SYSTEM</u>  1. COUNTERWEIGHT SUPPORT MECHANISM (VAFB) <ol style="list-style-type: none"> <li>a. (1) Upper bearing cap and block, total four places.</li> <li>b. (2) Motor coupling, total two places.</li> <li>c. (3) Lower bearing cap and block, total four places.</li> <li>d. (4) Rod end bearing and cylinder trunnion, total six places.</li> <li>e. (5) Hydraulic cylinder (10A3A3CY646 and 10A3A3CY647), total two places.</li> <li>f. (6) Bayonet shaft rotor, total two places.</li> </ol>		



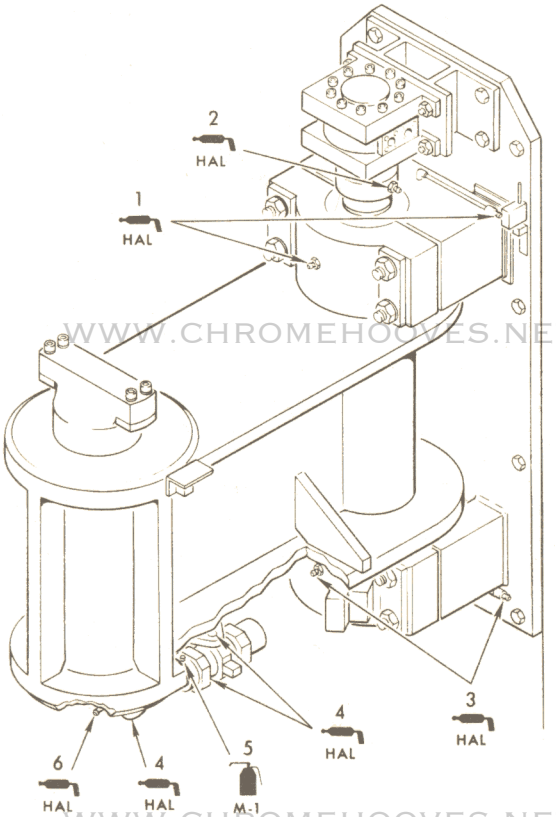
LUBRICATION SYMBOLS

SYMBOL	SPECIFICATION	TYPE OF LUBRICATION
HAL	HALOCARBON 25-10M-5A	GREASE, GENERAL PURPOSE, NORMAL LOAD
M-1	UCON M-1	HYDRAULIC FLUID, NON-FLAMMABLE

APPLICATION SYMBOLS



ARROW SYMBOLS



LAUNCHER PLATFORM DRIVE SYSTEM  
COUNTERWEIGHT SUPPORT MECHANISM

CARD NO. 2-14		WORK AREA 2C 2J	PUBLICATION NO. AND DATE T.O. 21M-HGM25A-6-1WC-1PE 8 May 1964
WORK UNIT CODE			CARD TIME 00:12
SYS	SUB-SYS AND COMP	MISSILE SILO INSPECTION NO. 90 DAY REQ	POWER <input checked="" type="checkbox"/> OFF <input type="checkbox"/> ON
		LUBRICATE AS INDICATED ON BACK SIDE OF CARD USING TABLE FOR REFERENCE TO TYPE OF LUBRICANT.	
BB	190	<u>CRIB AND ASSOCIATED EQUIPMENT</u>	
BB	19X	1. DECELERATION CYLINDERS <ul style="list-style-type: none"> <li>a. (1) Guide shafts, total two places.</li> <li>b. (2) Hydraulic cylinders (10A1A2CY266 and 10A1A2CY267), total two places.</li> </ul>	

LUBRICATION SYMBOLS

SYMBOL	SPECIFICATION	TYPE OF LUBRICATION
HAL	25-10M-5A	GREASE, GENERAL PURPOSE, NORMAL LOAD
M-1	UCON M-1	HYDRAULIC FLUID, NON-FLAMMABLE

APPLICATION SYMBOLS



OIL CAN



GREASE GUN

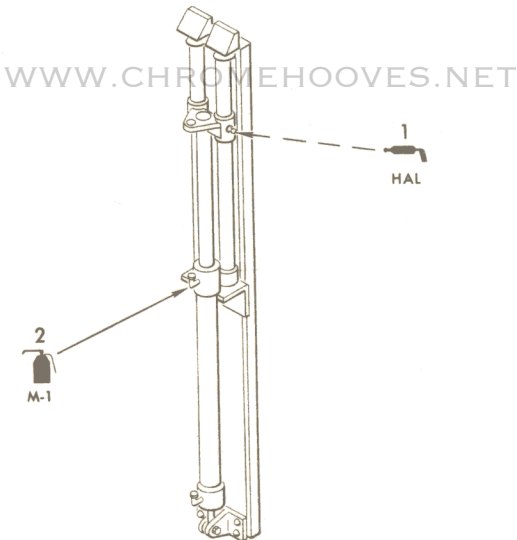
ARROW SYMBOLS



SPECIFIC LUBRICATION POINT



SPECIFIC LUBRICATION POINT PLUS IDENTICAL POINT OR POINTS NOT SHOWN



WWW.CHROMEHOOVES.NET  
**CRIB AND ASSOCIATED EQUIPMENT  
 DECELERATION CYLINDERS**

6035L46A

CARD NO. 2-15		WORK AREA 2D	PUBLICATION NO. AND DATE T.O. 21M-HGM25A-6-1WC-1PE 8 May 1964
WORK UNIT CODE			CARD TIME 00:10
SYS	SUB-SYS AND COMP	MISSILE SILO INSPECTION NO. 90 DAY REQ	POWER <input checked="" type="checkbox"/> OFF <input type="checkbox"/> ON
BA	89A	<p>LUBRICATE AS INDICATED ON BACK SIDE OF CARD USING TABLE FOR REFERENCE TO TYPE OF LUBRICANT.</p> <p><u>LAUNCHER PLATFORM DRIVE SYSTEM</u></p> <p>1. STUB RAIL LATCHES (LAFB 724TH/725TH SQDN, EAFB, BAFB, LAFB, MHAFB)</p> <p>a. (1) Four aligning rams, total eight places.</p> <p>b. (2) Four hydraulic cylinders (10A3A2CY1699, 10A3A2 CY1700, 10A3A2CY1701, 10A3A2CY1702), total four places.</p>	

LUBRICATION SYMBOLS

SYMBOL	SPECIFICATION	TYPE OF LUBRICATION
M-1 HOL	UCON M-1 HALOCARBON 20-20M-5A	HYDRAULIC FLUID, NON-FLAMMABLE GREASE, GENERAL PURPOSE, HEAVY LOAD

APPLICATION SYMBOLS



OIL  
CAN

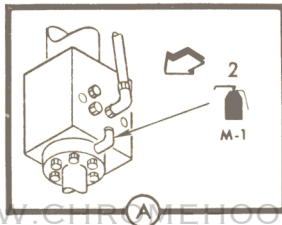
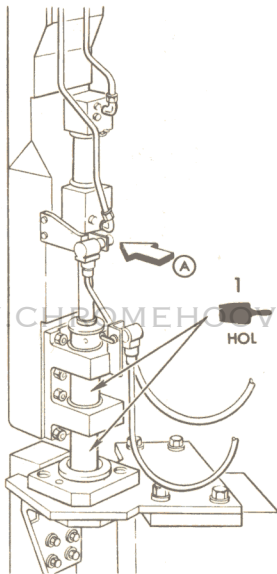


BRUSH



ARROW SYMBOLS

SPECIFIC LUBRICATION POINT



LAUNCHER PLATFORM DRIVE SYSTEM  
STUB RAIL LATCHES

CARD NO. 2-16		WORK AREA 2D	PUBLICATION NO. AND DATE T.O. 21M-HGM25A-6-1WC-1PE 8 May 1964	
WORK UNIT CODE			CARD TIME 00:12	
SYS	SUB-SYS AND COMP	MISSILE SILO  INSPECTION NO. 90 DAY REQ		POWER <input checked="" type="checkbox"/> OFF <input type="checkbox"/> ON
BA	830	<p>LUBRICATE AS INDICATED ON BACK SIDE OF CARD USING TABLE FOR REFERENCE TO TYPE OF LUBRICANT.</p> <p><u>CRIB AND ASSOCIATED EQUIPMENT</u></p> <p>1. MAINTENANCE PLATFORM I</p> <p>a. (1) Side leaf hinges, total 18 places.</p> <p>b. (2) Platform hinges, total six places.</p> <p>c. (3) Pivot pins, total 24 places.</p> <p>d. (4) Six hydraulic cylinders (910A1A2CY585, 10A1A2CY590, 10A1A2CY591, 10A1A2CY592, 10A1A2CY593, 10A1A2CY594), total six places.</p>		

**LUBRICATION SYMBOLS**

SYMBOL	SPECIFICATION	TYPE OF LUBRICATION
M-1	UCON M-1	HYDRAULIC FLUID, NON-FLAMMABLE
OGP	MIL-L-7870	LUBRICATING OIL GENERAL PURPOSE

**APPLICATION SYMBOLS**



OIL  
CAN

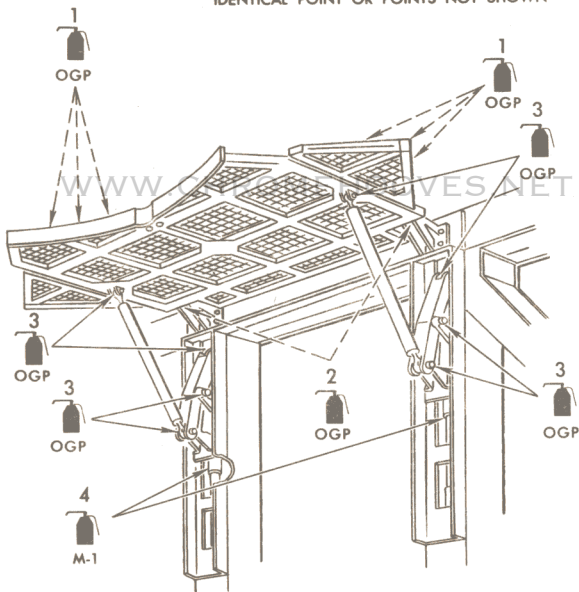
**ARROW SYMBOLS**



SPECIFIC LUBRICATION POINT



SPECIFIC LUBRICATION POINT PLUS  
IDENTICAL POINT OR POINTS NOT SHOWN



WWW.CHROMEHOVES.NET

**CRIB AND ASSOCIATED EQUIPMENT  
MAINTENANCE PLATFORM 1**

6035L15A

CARD NO. 2-17		WORK AREA 2E 2H	PUBLICATION NO. AND DATE T.O. 21M-HGM25A-6-1WC-1PE 8 May 1964
WORK UNIT CODE			CARD TIME 00:08
SYS	SUB-SYS AND COMP	MISSILE SILO INSPECTION NO. 90 DAY REQ	POWER <input checked="" type="checkbox"/> OFF <input type="checkbox"/> ON
BA	830	<p>LUBRICATE AS INDICATED ON BACK SIDE OF CARD USING TABLE FOR REFERENCE TO TYPE OF LUBRICANT.</p> <p><u>CRIB AND ASSOCIATED EQUIPMENT</u></p> <p>1. MAINTENANCE PLATFORM 2 AND 5</p> <p>a. (1) Side leaf hinges, total 42 places.</p> <p>b. (2) Platform hinges, total 14 places.</p> <p>c. (3) Pivot pins, total 21 places.</p> <p>d. (4) Seven hydraulic cylinders (10A1A3CY748, 10A1A3CY749, 10A1A3CY750, 10A1A3CY751, 10A1A6CY855, 10A1A6CY856, and 10A1A6CY857), total seven places.</p>	



**LUBRICATION SYMBOLS**

SYMBOL	SPECIFICATION	TYPE OF LUBRICATION
M-1	UCON M-1	HYDRAULIC FLUID, NON-FLAMMABLE
OGP	MIL-T-7870	LUBRICATING OIL (GENERAL PURPOSE)

**APPLICATION SYMBOLS**



OIL  
CAN

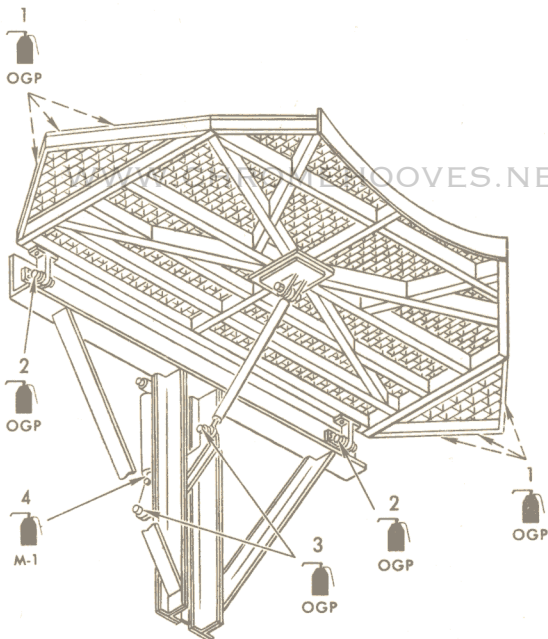
**ARROW SYMBOLS**



SPECIFIC LUBRICATION POINT



SPECIFIC LUBRICATION POINT PLUS  
IDENTICAL POINT OR POINTS NOT  
SHOWN



**CRIB AND ASSOCIATED EQUIPMENT  
MAINTENANCE PLATFORM 2 AND 5**

6035L16B

CARD NO. 2-18		WORK AREA 2F 2G	PUBLICATION NO. AND DATE T.O. 21M-HGM25A-6-1WC-1PE 8 May 1964	
WORK UNIT CODE			CARD TIME 00:20	
SYS	SUB-SYS AND COMP	MISSILE SILO INSPECTION NO. 90 DAY REQ		POWER <input checked="" type="checkbox"/> OFF <input type="checkbox"/> ON
BA	830	<p>LUBRICATE AS INDICATED ON BACK SIDE OF CARD USING TABLE FOR REFERENCE TO TYPE OF LUBRICANT.</p> <p><u>CRIB AND ASSOCIATED EQUIPMENT</u></p> <p>1. MAINTENANCE PLATFORM 3 and 4.</p> <p>a. (1) Side leaf hinges, total 48 places.</p> <p>b. (2) Platform hinge pins, total 16 places.</p> <p>c. (3) Hydraulic cylinders (10A1A4CY709, 10A1A4CY710, 10A1A4CY711, 10A1A4CY712, 10A1A4CY942, 10A1A5CY787, 10A1A5CY788, 10A1A5CY789, 10A1A5CY790), total nine places.</p> <p>d. (4) Pivot pins, total 36 places.</p>		

**LUBRICATION SYMBOLS**

SYMBOL	SPECIFICATION	TYPE OF LUBRICATION
MOS <sub>2</sub>	MIL-L-7866A	MOLYBDENUM DISULFIDE POWDER
M-1	UCON M-1	HYDRAULIC FLUID, NON-FLAMMABLE

**APPLICATION SYMBOLS**



OIL CAN

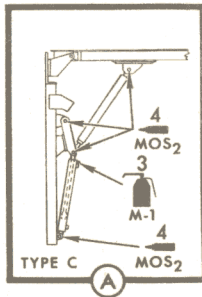
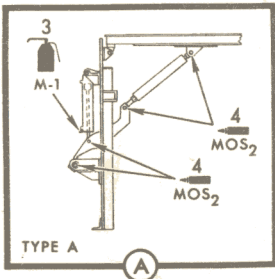
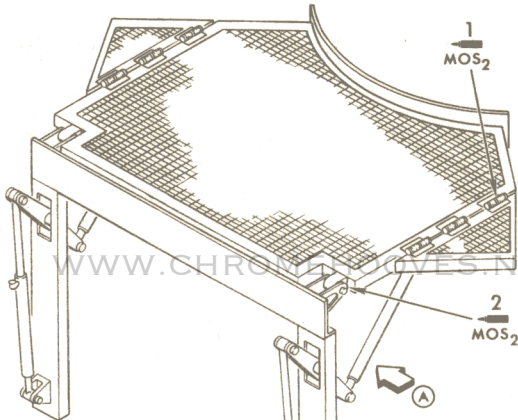


DRY

**ARROW SYMBOLS**



SPECIFIC LUBRICATION POINT



**CRIB AND ASSOCIATED EQUIPMENT  
MAINTENANCE PLATFORM 3 AND 4**

6035L105

CARD NO. 2-19		WORK AREA 2J	PUBLICATION NO. AND DATE T.O. 21M-HGM25A-6-1WC-1PE 8 May 1964	
WORK UNIT CODE				CARD TIME 00:10
SYS	SUB-SYS AND COMP	MISSILE SILO INSPECTION NO. 90 DAY REQ		POWER <input checked="" type="checkbox"/> OFF <input type="checkbox"/> ON
<p>LUBRICATE AS INDICATED ON BACK SIDE OF CARD USING TABLE FOR REFERENCE TO TYPE OF LUBRICANT.</p>				
KA	200	<u>RP-1 FUEL SYSTEM</u>		
KA	25A	1. FUEL UNLOADING PUMP (P-111)		
KA	25B	a. (1) Motor bearings, total two places.		
KA	25C	2. FUEL LINE DRAIN PUMP (P-112)		
KA	25D	b. (1) Motor bearings, total two places.		

**LUBRICATION SYMBOLS**

SYMBOL	SPECIFICATION	TYPE OF LUBRICATION
	MMS-N-305	GREASE, LUBRICATING LOX COMPATIBLE

**APPLICATION SYMBOLS**

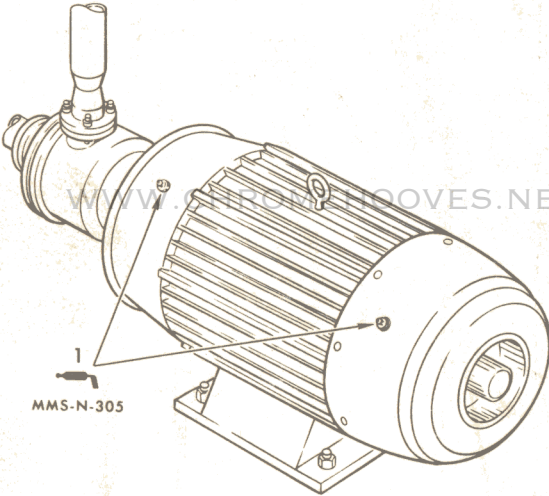


GREASE  
GUN

**ARROW SYMBOLS**



SPECIFIC LUBRICATION POINT



MMS-N-305

**RP-1 FUEL SYSTEM**  
**FUEL UNLOADING PUMP (P-111)**  
**FUEL LINE DRAIN PUMP (P-112)**

6035L20A

CARD NO. 2-20		WORK AREA 2J	PUBLICATION NO. AND DATE T.O. 21M-HGM25A-6-1WC-1PE 8 May 1964	
WORK UNIT CODE			CARD TIME 00:20	
SYS	SUB-SYS AND COMP	MISSILE SILO INSPECTION NO. 90 DAY REQ		POWER <input checked="" type="checkbox"/> OFF <input type="checkbox"/> ON
BB	290	<p>LUBRICATE AS INDICATED ON BACK SIDE OF CARD USING TABLE FOR REFERENCE TO TYPE OF LUBRICANT.</p> <p><u>CRIB AND ASSOCIATED EQUIPMENT</u></p> <p>1. LAUNCHER PLATFORM LOWER BUFFER MECHANISM</p> <p>a. (1) Hydraulic reservoir until sight gage indicates full.</p> <p>b. (2) Guide rods, total eight places.</p> <p>c. (3) Four hydraulic cylinders (10A1A8CY122, 10A1A8CY124, 10A1A8CY126, 10A1A8CY128), total four places.</p>		

**LUBRICATION SYMBOLS**

SYMBOL	SPECIFICATION	TYPE OF LUBRICATION
M-1 MOS <sub>2</sub>	UCON M-1 MIL-L-7866A	HYDRAULIC FLUID, NON-FLAMMABLE MOLYBDENUM DISULFIDE POWDER

**APPLICATION SYMBOLS**



OIL  
CAN



BULK

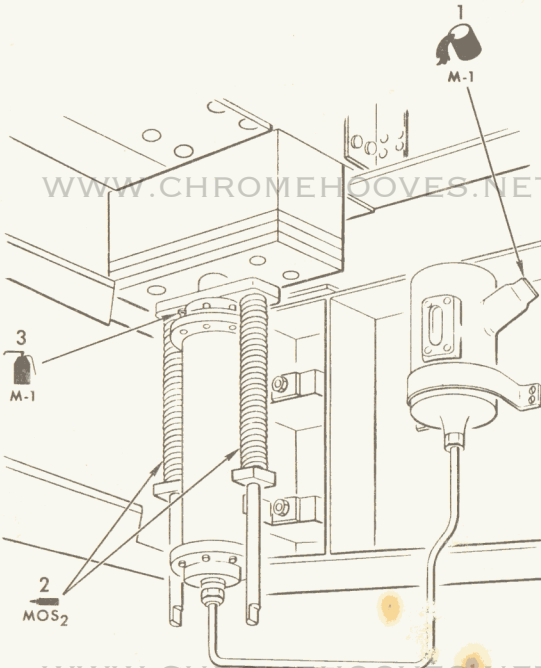


DRY

**ARROW SYMBOLS**



SPECIFIC LUBRICATION POINT



**CRIB AND ASSOCIATED EQUIPMENT LAUNCHER  
PLATFORM LOWER BUFFER MECHANISM**

CARD NO. 2-21		WORK AREA 2F 2G	PUBLICATION NO. AND DATE T.O. 21M-HGM25A-6-1WC-1PE 8 May 1964
WORK UNIT CODE			CARD TIME 00:20
SYS	SUB-SYS AND COMP	MISSILE SILO  INSPECTION NO. 90 DAY REQ	POWER <input checked="" type="checkbox"/> OFF <input type="checkbox"/> ON
BB	15B	<p>LUBRICATE AS INDICATED ON BACK SIDE OF CARD USING TABLE FOR REFERENCE TO TYPE OF LUBRICANT.</p> <p><u>LAUNCHER PLATFORM SYSTEM</u></p> <p>1. WATER SPRAY SYSTEM</p> <p>a. (1) Hydraulic cylinders (10A2A2CY165 and 10A2A2CY170), total four places.</p> <p>b. (2) Hydraulic cylinder trunnion bearings, total four places.</p> <p>c. (3) Hydraulic cylinder rod eye bearings, total two places.</p>	



LUBRICATION SYMBOLS

SYMBOL	SPECIFICATION	TYPE OF LUBRICATION
M-1 MOS <sub>2</sub>	UCON M-1 MIL-L-7866A	HYDRAULIC FLUID, NON-FLAMMABLE MOLYBDENUM DISULFIDE POWDER

APPLICATION SYMBOLS



OIL  
CAN

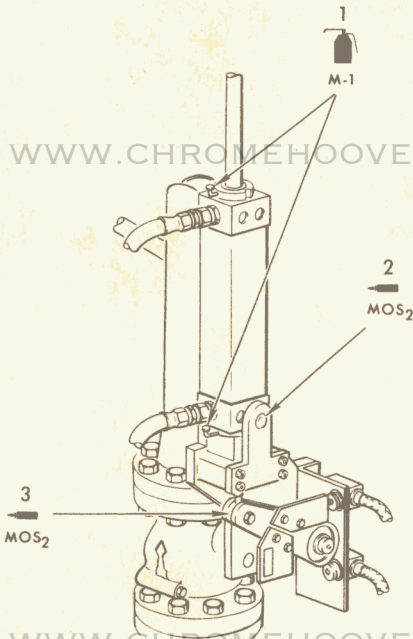


DRY

ARROW SYMBOLS



SPECIFIC LUBRICATION POINT



LAUNCHER PLATFORM SYSTEM  
WATER SPRAY SYSTEM

CARD NO. 2-22		WORK AREA 3B	PUBLICATION NO. AND DATE T.O. 21M-HGM25A-6-1WC-1PE 8 MAY 1964	
WORK UNIT CODE			CARD TIME 00:06	
SYS	SUB-SYS AND COMP	PROPELLANT TERMINAL INSPECTION NO. 90 DAY REQ		POWER <input checked="" type="checkbox"/> OFF <input type="checkbox"/> ON
		LUBRICATE AS INDICATED ON BACK SIDE OF CARD USING TABLE FOR REFERENCE TO TYPE OF LUBRICANT.		
KA	100	<u>PROPELLANT LOADING SYSTEM</u>		
KA	19J	1. VACUUM PUMPS (P-702, P-703) (LOX SUBCOOLER)		
KA	19K	a. (1) Motor bearings, total two places.		

LUBRICATION SYMBOLS

SYMBOL	SPECIFICATION	TYPE OF LUBRICATION
	MMS-N-212A	LOX COMPATIBLE OIL, FLUOROCARBON.

APPLICATION SYMBOLS

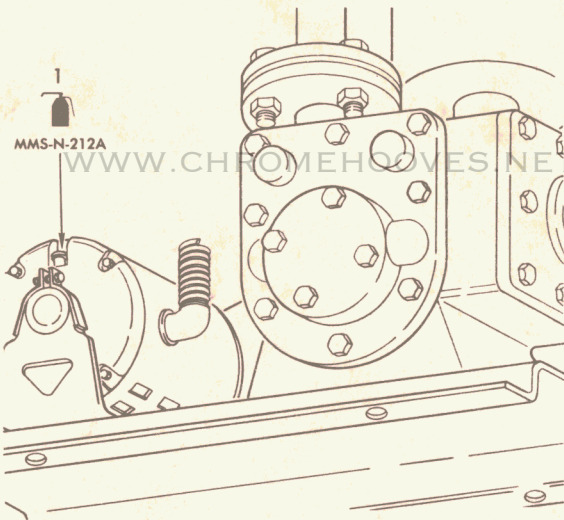


OIL  
CAN

ARROW SYMBOLS



SPECIFIC LUBRICATION POINT



WWW.CHROMEHOOVES.NET

PROPELLANT LOADING SYSTEM  
VACUUM PUMPS (P-702, P-703)

6035L48A

CARD NO. 2-23		WORK AREA 3C	PUBLICATION NO. AND DATE T.O. 21M-HGM25A-6-1WC-1PE 8 May 1964
WORK UNIT CODE			CARD TIME 00:04
SYS	SUB-SYS AND COMP	PROPELLANT TERMINAL INSPECTION NO. 90 DAY REQ	POWER <input checked="" type="checkbox"/> OFF <input type="checkbox"/> ON
		LUBRICATE AS INDICATED ON BACK SIDE OF CARD USING TABLE FOR REFERENCE TO TYPE OF LUBRICANT.	
KA	100	<u>PROPELLANT LOADING SYSTEM</u>	
KA	19G	1. VACUUM PUMP (P-701) (LOX STORAGE TANK)	
KA	19H	a. (1) Motor bearings, total one place.	

**LUBRICATION SYMBOLS**

SYMBOL	SPECIFICATION	TYPE OF LUBRICATION
	MMS-N-212A	LOX COMPATIBLE OIL, FLOUROCARBON

**APPLICATION SYMBOLS**

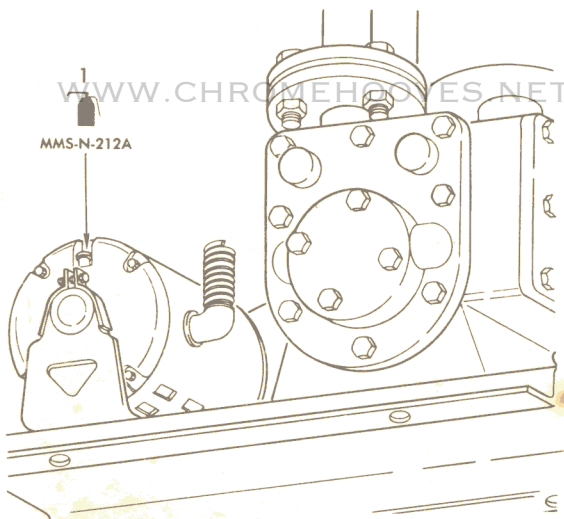


OIL  
CAN

**ARROW SYMBOLS**



SPECIFIC LUBRICATION POINT



WWW.CHROMEHOOVES.NET

**PROPELLANT LOADING SYSTEM  
VACUUM PUMP (P-701)**

CARD NO. 2-24		WORK AREA 10D 10E 10C 10F VAFB	PUBLICATION NO. AND DATE T.O. 21M-HGM25A-6-1WC-1PE 8 May 1964
WORK UNIT CODE			CARD TIME 00:45
SYS	SUB-SYS AND COMP	ANTENNA TERMINAL  INSPECTION NO. 90 DAY REQ	POWER <input checked="" type="checkbox"/> OFF <input type="checkbox"/> ON
MH	210	<p>LUBRICATE AS INDICATED ON BACK SIDE OF CARD USING TABLE FOR REFERENCE TO TYPE OF LUBRICANT.</p> <p><u>ANTENNA PROTECTING AND ELEVATING SET OA-2901/GRW-5</u></p> <p>1. UP-LOCK ASSEMBLY</p> <p>a. (1) Support brackets, total three places.</p> <p>b. (2) Connecting link, total three places.</p> <p>c. (3) Link arms, total 13 places.</p> <p>d. (4) Adjusting brackets, total six places.</p> <p>e. (5) Pivot brackets, total 12 places.</p>	

LUBRICATION SYMBOLS

SYMBOL	SPECIFICATION	TYPE OF LUBRICATION
GSG	MIL-G-7118	GREASE, AIRCRAFT GEAR AND ACTUATOR SCREW

APPLICATION SYMBOLS

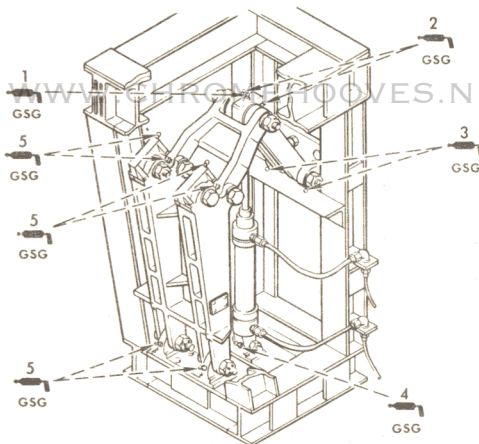


GREASE GUN

ARROW SYMBOLS



SPECIFIC LUBRICATION POINT PLUS IDENTICAL POINT OR POINTS NOT SHOWN



WWW.CHROMEHOOVES.NET

ANTENNA PROTECTING AND ELEVATING SET  
OA-2901/GRW-5 UP-LOCK ASSEMBLY

CARD NO. 2-25		WORK AREA 10D 10E 10C 10F VAFB	PUBLICATION NO. AND DATE T.O. 21M-HGM25A-6-1WC-1PE 8 May 1964
WORK UNIT CODE			CARD TIME 00:45
SYS	SUB-SYS AND COMP	ANTENNA TERMINAL  INSPECTION NO. 90 DAY REQ	POWER <input checked="" type="checkbox"/> OFF <input type="checkbox"/> ON
MH	23A	<p>LUBRICATE AS INDICATED ON BACK SIDE OF CARD USING TABLE FOR REFERENCE TO TYPE OF LUBRICANT.</p> <p><u>ANTENNA PROTECTING AND ELEVATING SET OA-2901/GRW-5</u></p> <p>1. DOOR DRIVE CYLINDER ASSEMBLY</p> <p>a. (1) Upper mounting clevis, total four places.</p> <p>b. (2) Top O-ring seal lubricator, total four places.</p> <p>c. (3) Lower mounting clevis, total four places.</p>	



**LUBRICATION SYMBOLS**

SYMBOL	SPECIFICATION	TYPE OF LUBRICATION
OHC	MIL-H-6083	PRESERVATIVE OIL, HYDRAULIC EQUIPMENT
GSG	MIL-G-7118	GREASE, AIRCRAFT GEAR AND ACTUATOR

**APPLICATION SYMBOLS**



OIL  
CAN

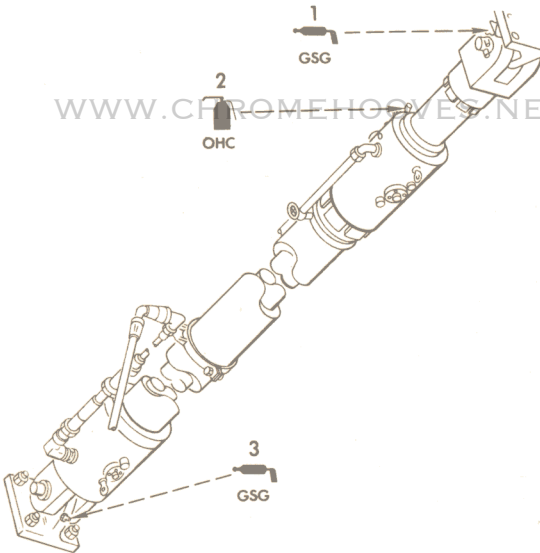


GREASE  
GUN

**ARROW SYMBOLS**



SPECIFIC LUBRICATION POINT PLUS  
IDENTICAL POINT OR POINTS NOT SHOWN



ANTENNA PROTECTING AND ELEVATING SET  
OA-2901/GRW-5  
DOOR DRIVE CYLINDER ASSEMBLY

CARD NO. 2-26		WORK AREA 2A	PUBLICATION NO. AND DATE T.O. 21M-HGM25A-6-1WC-1PE 8 May 1964
WORK UNIT CODE			CARD TIME 00:20
SYS	SUB-SYS AND COMP	MISSILE SILO INSPECTION NO. 90 DAY REQ.	POWER <input checked="" type="checkbox"/> OFF <input type="checkbox"/> ON
BB	210	<p>LUBRICATE AS INDICATED ON BACK SIDE OF CARD USING TABLE FOR REFERENCE TO TYPE OF LUBRICANT.</p> <p><u>CLOSURE DOOR SYSTEM</u></p> <p>1. CLOSURE DOOR ASSEMBLY</p> <p>a. (1) Two bracket assemblies, total four places.</p> <p>b. (2) Two rod end bearings, total two places.</p> <p>c. (3) Silo door bearing, total four places.</p> <p>d. (4) Hydraulic cylinders (10A3A1CY187 and 10A3A1CY208), total two places.</p> <p>e. (5) Four breakaway cylinders (10A3A1CY185, 10A3A1CY186, 10A3A1CY206, 10A3A1CY207), total four places.</p>	

**LUBRICATION SYMBOLS**

SYMBOL	SPECIFICATION	TYPE OF LUBRICATION
GSG	MIL-G-7118A	GREASE, AIRCRAFT GEAR AND ACTUATOR
GLT	MIL-G-3278	GREASE, AIRCRAFT AND INSTRUMENT HIGH AND LOW TEMPERATURE
M-1	UCON M-1	HYDRAULIC FLUID, NON-FLAMMABLE

**APPLICATION SYMBOLS**



OIL  
CAN



GREASE  
GUN

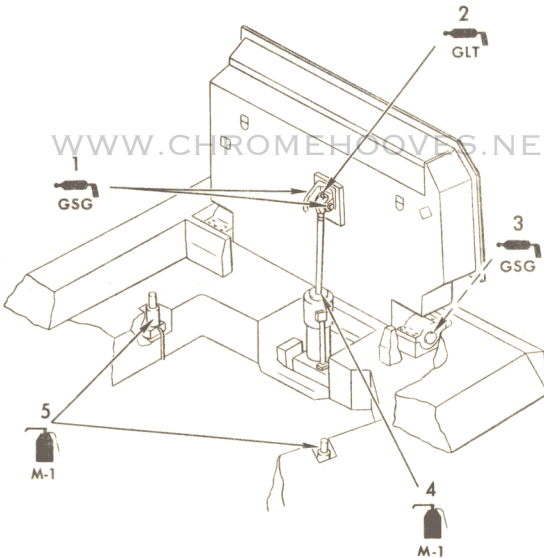
**ARROW SYMBOLS**



SPECIFIC LUBRICATION POINT



SPECIFIC LUBRICATION POINT PLUS  
IDENTICAL POINT OR POINTS NOT SHOWN



WWW.CHROMEHOOVES.NET

**CLOSURE DOOR SYSTEM  
CLOSURE DOOR ASSEMBLY**

CARD NO. 2-27		WORK AREA 2K	PUBLICATION NO. AND DATE T.O. 21M-HGM25A-6-1WC-1PE 8 May 1964	
WORK UNIT CODE			CARD TIME 00:20	
SYS	SUB-SYS AND COMP	MISSILE SILO INSPECTION NO. 90 DAY REQ		POWER <input checked="" type="checkbox"/> OFF <input type="checkbox"/> ON
BB	148	<p>LUBRICATE AS INDICATED ON BACK SIDE OF CARD USING TABLE FOR REFERENCE TO TYPE OF LUBRICANT.</p> <p><u>LAUNCHER PLATFORM SYSTEM</u></p> <p>1. MISSILE SUPPORT AND RESTRAINING MECHANISM</p> <p>a. (1) Missile support mechanism, total 24 places.</p> <p>b. (2) Support pin, total eight places.</p> <p>c. (3) Jack screw support, total four places.</p> <p>d. (4) Jack screw (when installed), total four places.</p> <p>e. (5) Jack screw thrust bearing, total four places.</p>		

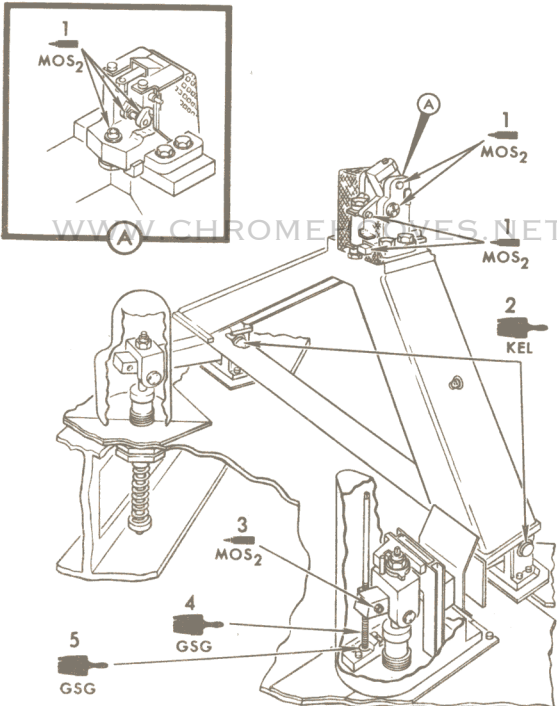
LUBRICATION SYMBOLS

SYMBOL	SPECIFICATION	TYPE OF LUBRICATION
MOS <sub>2</sub> KEL	MIL-L-7866A KEL-F-90	MOLYBDENUM DISULFIDE/ POWER GREASE, HEAVY DUTY
GSG	MIL-G-7118	GREASE, AIRCRAFT GEAR AND ACTUATOR

APPLICATION SYMBOLS



ARROW SYMBOLS



LAUNCHER PLATFORM SYSTEM MISSILE  
SUPPORT AND RESTRAINING MECHANISM

CARD NO. 2-28		WORK AREA 6A	PUBLICATION NO. AND DATE T.O. 21M-HGM25A-6-1WC-1PE 8 May 1964	
WORK UNIT CODE				CARD TIME 00:20
SYS	SUB-SYS AND COMP	CONTROL CENTER INSPECTION NO.180 DAY REQ		POWER <input checked="" type="checkbox"/> OFF <input type="checkbox"/> ON
MD	220	<p>LUBRICATE AS INDICATED ON BACK SIDE OF CARD USING TABLE FOR REFERENCE TO TYPE OF LUBRICANT.</p> <p><u>MISSILE GUIDANCE SET AN/GRW-5</u></p> <p>1. MOTOR-GENERATOR PU-489/GRQ-7 UNITS 42, 43</p> <p>a. (1) Two motor bearings, total four places.</p> <p>b. (2) Two coupling fittings, total two places.</p> <p>c. (3) Two generator bearings, total four places.</p>		

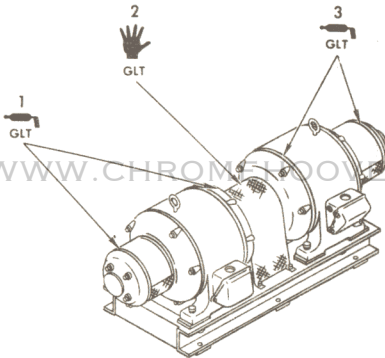
LUBRICATION SYMBOLS

SYMBOL	SPECIFICATION	TYPE OF LUBRICATION
GLT	MIL-G-3278	GREASE, AIRCRAFT AND INSTRUMENT (FOR LOW AND HIGH TEMPERATURES)

APPLICATION SYMBOLS



ARROW SYMBOLS



WWW.CHROMEHOOVES.NET  
 MISSILE GUIDANCE SET AN/GRW-5  
 MOTOR-GENERATOR  
 PU-489/GRQ-7, UNITS 42, 43

CARD NO. 2-29		WORK AREA 2B	PUBLICATION NO. AND DATE T.O. 21M-HGM25A-6-1WC-1PE 8 May 1964	
WORK UNIT CODE				CARD TIME 00:20
SYS	SUB-SYS AND COMP	MISSILE SILO INSPECTION NO. 180 DAY REQ		POWER <input checked="" type="checkbox"/> OFF <input type="checkbox"/> ON
BA	91A	<p>LUBRICATE AS INDICATED ON BACK SIDE OF CARD USING TABLE FOR REFERENCE TO TYPE OF LUBRICANT.</p> <p><u>LAUNCHER PLATFORM LOCKING SYSTEM</u></p> <p>1. VERTICAL LOAD LOCKS (VAFB)</p> <p>a. (1) Gears, total four places.</p> <p>b. (2) Four self-aligning blocks, total eight places.</p>		

WWW.CHROMEHOOVES.NET

WWW.CHROMEHOOVES.NET



**LUBRICATION SYMBOLS**

SYMBOL	SPECIFICATION	TYPE OF LUBRICATION
MOS <sub>2</sub>	MIL-L-7866A	MOLYBDENUM DISULFIDE POWDER

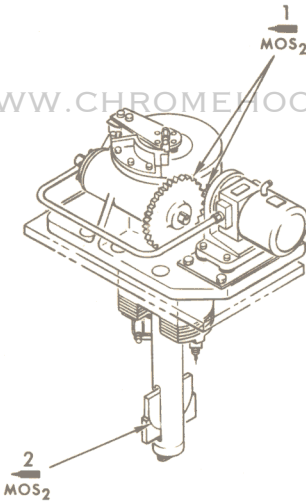
**APPLICATION SYMBOLS**



DRY

**ARROW SYMBOLS**

SPECIFIC LUBRICATION POINT



WWW.CHROMEHOOVES.NET  
**LAUNCHER PLATFORM LOCKING SYSTEM  
 VERTICAL LOAD LOCKS**

CARD NO. 2-30		WORK AREA 2B	PUBLICATION NO. AND DATE T.O. 21M-HGM25A-6-1WC-1PE 8 May 1964	
WORK UNIT CODE				CARD TIME 00:20
SYS	SUB-SYS AND COMP	MISSILE SILO INSPECTION NO. 180 DAY REQ		POWER <input checked="" type="checkbox"/> OFF <input type="checkbox"/> ON
BB	170	<p>LUBRICATE AS INDICATED ON BACK SIDE OF CARD USING TABLE FOR REFERENCE TO TYPE OF LUBRICANT.</p> <p><u>LAUNCHER PLATFORM DRIVE SYSTEM</u></p> <p>1. COUNTERWEIGHT TO DRIVE BASE LOCKS</p> <p>a. (1) Four hydraulic cylinders (10A3A1CY897, 10A3A1CY898, 10A3A1CY899, 10A3A1CY900), total four places.</p> <p>b. (2) Lock pins and upper bearing blocks, total four places.</p> <p>c. (3) Lock body, total two places.</p>		

LUBRICATION SYMBOLS

SYMBOL	SPECIFICATION	TYPE OF LUBRICATION
M-1	UCON M-1	HYDRAULIC FLUID, NON-FLAMMABLE
HAL	HALOCARBON 25-10M-5A	GREASE, GENERAL PURPOSE, NORMAL LOAD
MOS <sub>2</sub>	MIL-L-7866A	MOLYBDENUM DISULFIDE POWDER

APPLICATION SYMBOLS



OIL  
CAN



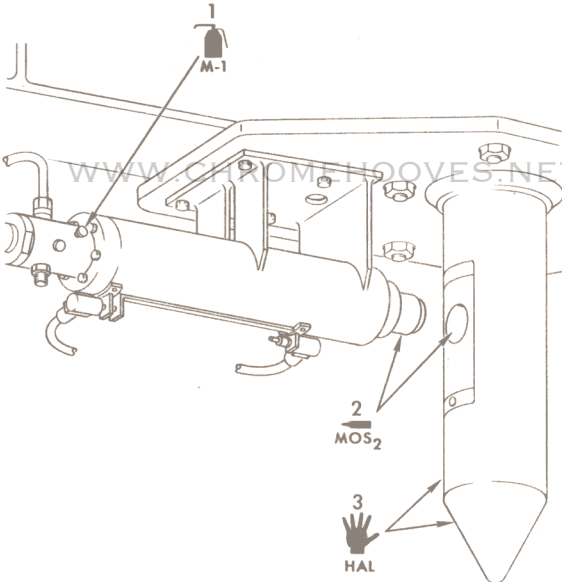
HAND



DRY

ARROW SYMBOLS

→ SPECIFIC LUBRICATION POINT



LAUNCHER PLATFORM DRIVE SYSTEM  
COUNTERWEIGHT TO DRIVE BASE LOCKS

CARD NO. 2-31		WORK AREA 2L	PUBLICATION NO. AND DATE T.O. 21M-HGM25A-6-1WC-1PE 8 May 1964
WORK UNIT CODE			CARD TIME 00:20
SYS	SUB-SYS AND COMP	MISSILE SILO INSPECTION NO. 180 DAY REQ	POWER <input checked="" type="checkbox"/> OFF <input type="checkbox"/> ON
BB	14P	<p>LUBRICATE AS INDICATED ON BACK SIDE OF CARD USING TABLE FOR REFERENCE TO TYPE OF LUBRICANT.</p> <p><u>LAUNCHER PLATFORM SYSTEM</u></p> <p>1. FLAME DEFLECTOR EXTENSION CYLINDER</p> <p>a. (1) Pivot pin, total eight places.</p> <p>b. (2) Bushings, total eight.</p> <p>c. (3) Hydraulic cylinders (10A2A2CY293, 10A2A2CY394, 10A2A2CY395, 10A2A2CY396), total four places.</p> <p>d. (4) Rod end bearing, total four places.</p>	

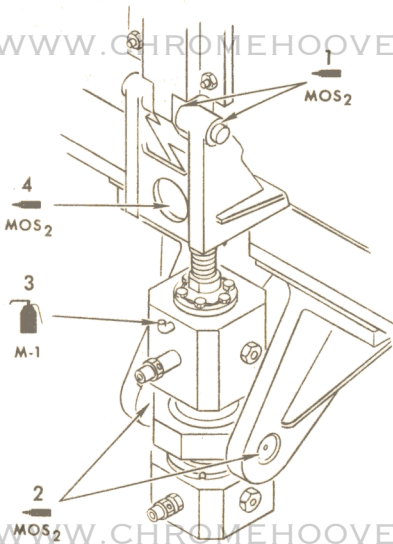
LUBRICATION SYMBOLS

SYMBOL	SPECIFICATION	TYPE OF LUBRICATION
MOS <sub>2</sub>	MIL-L-7866A	MOLYBDENUM DISULFIDE POWDER
M-1	UCON M-1	HYDRAULIC FLUID, NON-FLAMMABLE

APPLICATION SYMBOLS



ARROW SYMBOLS



LAUNCHER PLATFORM SYSTEM  
FLAME DEFLECTOR EXTENSION CYLINDER

CARD NO. 2-32		WORK AREA 2L	PUBLICATION NO. AND DATE T.O. 21M-HGM25A-6-1WC-1PE 8 May 1964	
WORK UNIT CODE			CARD TIME 00:10	
SYS	SUB-SYS AND COMP	MISSILE SILO INSPECTION NO. 180 DAY REQ		POWER <input checked="" type="checkbox"/> OFF <input type="checkbox"/> ON
BB	14H	<p>LUBRICATE AS INDICATED ON BACK SIDE OF CARD USING TABLE FOR REFERENCE TO TYPE OF LUBRICANT.</p> <p><u>UMBILICAL SYSTEM</u></p> <p>1. TOWER TILTING MECHANISM</p> <p>a. (1) Hydraulic cylinders (10A2A1CY100 and 10A2A1CY110), total two places.</p>		

LUBRICATION SYMBOLS

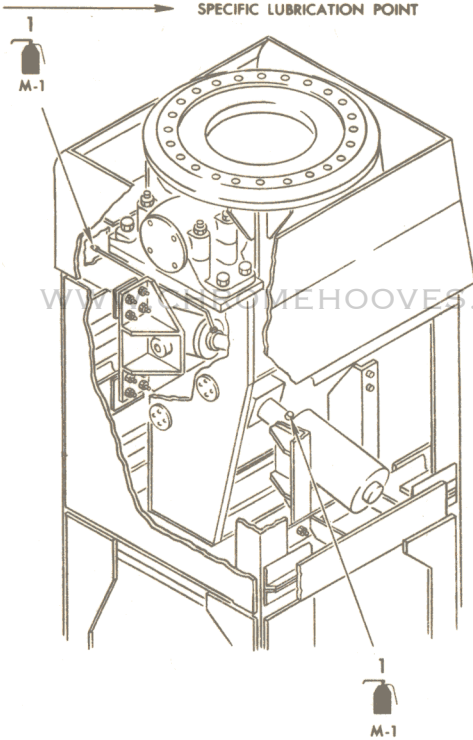
SYMBOL	SPECIFICATION	TYPE OF LUBRICATION
M-1	UCON M-1	HYDRAULIC FLUID NON-FLAMMABLE

APPLICATION SYMBOLS



ARROW SYMBOLS

SPECIFIC LUBRICATION POINT



WWW.CHROMEHOOVES.NET

UMBILICAL SYSTEM  
TOWER TILTING MECHANISM

CARD NO. 2-33		WORK AREA 3A	PUBLICATION NO. AND DATE T.O. 21M-HGM25A-6-1WC-1PE 8 May 1964	
WORK UNIT CODE				CARD TIME 00:20
SYS	SUB-SYS AND COMP	PROPELLANT TERMINAL INSPECTION NO.180 DAY REQ		POWER <input checked="" type="checkbox"/> OFF <input type="checkbox"/> ON
KA	159	<p>LUBRICATE AS INDICATED ON BACK SIDE OF CARD USING TABLE FOR REFERENCE TO TYPE OF LUBRICANT.</p> <p><u>PROPELLANT LOADING SYSTEM</u></p> <p>1. CONTROL VALVES</p> <p>a. (1) Nineteen valves, total nineteen places.</p>		



**LUBRICATION SYMBOLS**

SYMBOL	SPECIFICATION	TYPE OF LUBRICATION
	MMS-N-305	GREASE, LUBRICATING, LOX COMPATIBLE

**APPLICATION SYMBOLS**

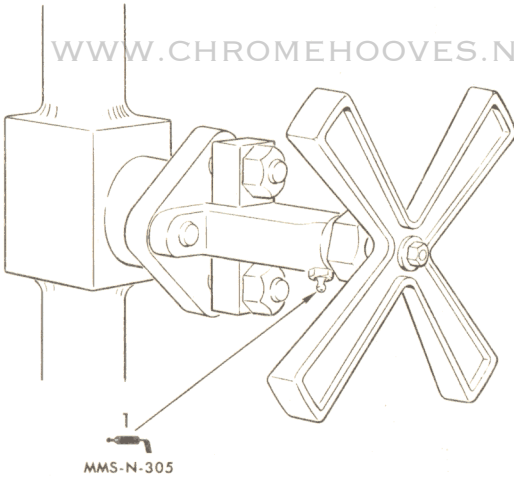


GREASE  
GUN

**ARROW SYMBOLS**



SPECIFIC LUBRICATION POINT



WWW.CHROMEHOOVES.NET  
**PROPELLANT LOADING SYSTEM  
 CONTROL VALVES**

CARD NO. 2-34		WORK AREA 4C	PUBLICATION NO. AND DATE T.O. 21M-HGM25A-6-1WC-1PE 8 May 1964	
WORK UNIT CODE			CARD TIME 00:10	
SYS	SUB-SYS AND COMP	EQUIPMENT TERMINAL INSPECTION NO.180 DAY REQ		POWER <input checked="" type="checkbox"/> OFF <input type="checkbox"/> ON
NA		LUBRICATE AS INDICATED ON BACK SIDE OF CARD USING TABLE FOR REFERENCE TO TYPE OF LUBRICANT.		
NC	100	<u>LAUNCH CONTROL FACILITIES</u>  1. MISSILE AIR CONDITIONER A/F 32C-5  a. (1) Motor, total one place.		

LUBRICATION SYMBOLS

SYMBOL	SPECIFICATION	TYPE OF LUBRICATION
	MIL-L-15719A	GREASE, SILICONE INSULATED, ELECTRIC MOTOR

APPLICATION SYMBOLS

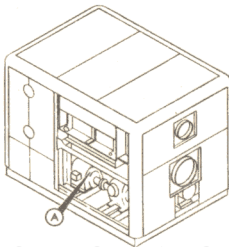


COLLAPSIBLE TUBE

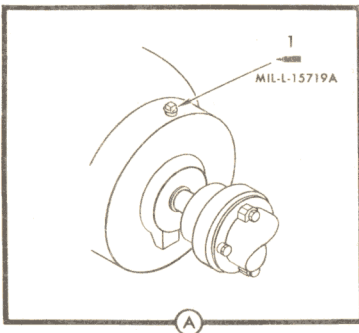
ARROW SYMBOLS



SPECIFIC LUBRICATION POINT



WWW.CHROMEHOOVES.NET



WWW.CHROMEHOOVES.NET

LAUNCH CONTROL FACILITIES  
MISSILE AIR CONDITIONER A/F 32C-5

CARD NO. 2-35		WORK AREA 11A	PUBLICATION NO. AND DATE T.O. 21M-HGM25A-6-1WC-1PE 8 May 1964	
WORK UNIT CODE			CARD TIME 00:02	
SYS	SUB-SYS AND COMP	FUEL STORAGE AREA INSPECTION NO. 180 DAY REQ		POWER <input checked="" type="checkbox"/> OFF <input type="checkbox"/> ON
KA	200	<p>LUBRICATE AS INDICATED ON BACK SIDE OF CARD USING TABLE FOR REFERENCE TO TYPE OF LUBRICANT.</p> <p><u>RP-1 FUEL SUB-SYSTEM</u></p>		
KA	210	<p>1. CONTROL VALVES (MHAFB)</p> <p>a. (1) Four type N<sub>2</sub> valves, total four places.</p>		

**LUBRICATION SYMBOLS**

SYMBOL	SPECIFICATION	TYPE OF LUBRICATION
	MMS-N-305	GREASE, LUBRICATING LOX COMPATIBLE

**APPLICATION SYMBOLS**



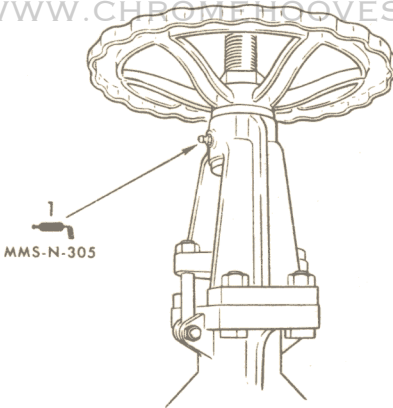
GREASE  
GUN

**ARROW SYMBOLS**



SPECIFIC LUBRICATION POINT

WWW.CHROMEHOOVES.NET



WWW.CHROMEHOOVES.NET

**RP-1 FUEL SUBSYSTEM  
CONTROL VALVES**

CARD NO. 2-36		WORK AREA 11A	PUBLICATION NO. AND DATE T.O. 21M-HGM25A-6-1WC-1PE 8 May 1964	
WORK UNIT CODE			CARD TIME 00:02	
SYS	SUB-SYS AND COMP	FUEL STORAGE AREA INSPECTION NO. 180 DAY REQ		POWER <input checked="" type="checkbox"/> OFF <input type="checkbox"/> ON
KA	200	LUBRICATE AS INDICATED ON BACK SIDE OF CARD USING TABLE FOR REFERENCE TO TYPE OF LUBRICANT.		
KA-	210	<u>RP-1 FUEL SUB-SYSTEM</u>  1. CONTROL VALVES (LAFB 724TH/ 725TH SQDN, EAFB, BAFB, LAFB)  a. (1) Four N <sub>2</sub> valves, total four places.		

**LUBRICATION SYMBOLS**

SYMBOL	SPECIFICATION	TYPE OF LUBRICATION
	MMS-N-305	GREASE, LUBRICATING, LOX COMPATIBLE

**APPLICATION SYMBOLS**

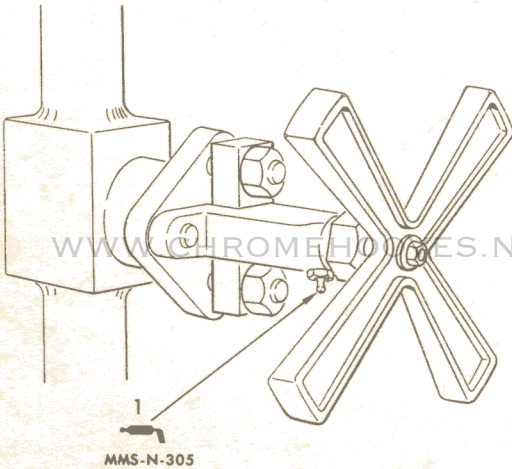


GREASE  
GUN

**ARROW SYMBOLS**



SPECIFIC LUBRICATION POINT



RP-1 FUEL SUBSYSTEM CONTROL VALVES

CARD NO. 2-37		WORK AREA 11A	PUBLICATION NO. AND DATE T.O. 21M-HGM25A-6-1WC-1PE 8 MAY 1964	
WORK UNIT CODE				CARD TIME 00:30
SYS	SUB-SYS AND COMP	FUEL STORAGE AREA INSPECTION NO. 180 DAY REQ		POWER <input checked="" type="checkbox"/> OFF <input type="checkbox"/> ON
KA	200	LUBRICATE AS INDICATED ON BACK SIDE OF CARD USING TABLE FOR REFERENCE TO TYPE OF LUBRICANT.		
KA	210	<u>RP-1 FUEL SUB-SYSTEM</u> 1. CONTROL VALVES a. (1) Four valves, total four places.		



**LUBRICATION SYMBOLS**

SYMBOL	SPECIFICATION	TYPE OF LUBRICATION
GRG	MIL-G-6032A	GREASE, PLUG VALVE, GASOLINE AND OIL RESISTANT

**APPLICATION SYMBOLS**

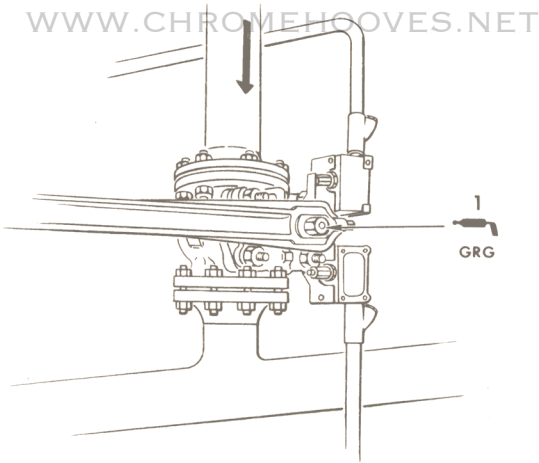


GREASE  
GUN

**ARROW SYMBOLS**



SPECIFIC LUBRICATION POINT



RP-1 FUEL SUBSYSTEM CONTROL VALVES

CARD NO. 2-38		WORK AREA 10D	PUBLICATION NO. AND DATE T.O. 21M-HGM25A-6-1WC-1PE 8 May 1964
WORK UNIT CODE			CARD TIME 00:10
SYS	SUB-SYS AND COMP	ANTENNA TERMINAL  INSPECTION NO. 360 DAY REQ	POWER <input checked="" type="checkbox"/> OFF <input type="checkbox"/> ON
MH	320	<p>LUBRICATE AS INDICATED ON BACK SIDE OF CARD USING TABLE FOR REFERENCE TO TYPE OF LUBRICANT.</p> <p><u>ENVIRONMENTAL SEAL HEATING SYSTEM</u></p> <p>1 ETHYLENE GLYCOL PUMP</p> <p>a. (1) Motor bearings, total two places.</p> <p>b. (2) Pump bearing, total one place.</p> <p>c. (3) Flow control valve, total one place.</p>	

**LUBRICATION SYMBOLS**

SYMBOL	SPECIFICATION	TYPE OF LUBRICATION
GRG	MIL-L-2104A SAE-20	LUBRICATING OIL INTERNAL COMBUSTION ENGINE, HEAVY DUTY
	MIL-L-2104A SAE-50	LUBRICATING OIL, INTERNAL COMBUSTION ENGINE, HEAVY DUTY
	MIL-G-6032A	GREASE, PLUG VALVE, GASOLINE AND OIL RESISTANT

**APPLICATION SYMBOLS**



OIL  
CAN



HAND

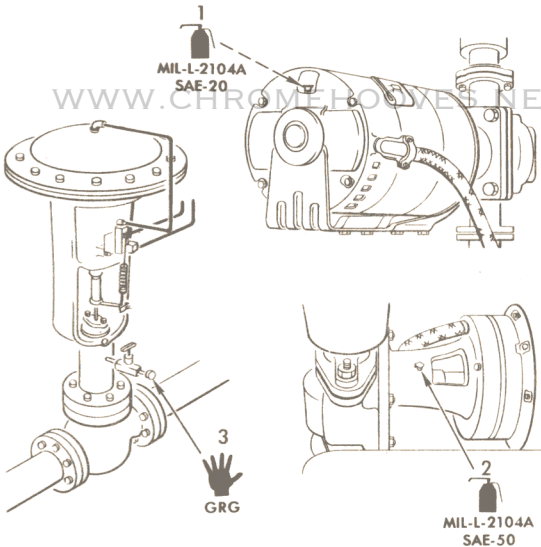
**ARROW SYMBOLS**



SPECIFIC LUBRICATION POINT



SPECIFIC LUBRICATION POINT PLUS  
IDENTICAL POINT OR POINTS NOT SHOWN



**ENVIRONMENTAL SEAL HEATING SYSTEM  
ETHYLENE GLYCOL PUMP**

6035L55A

CARD NO. 2-39		WORK AREA 10D 10E 10C 10F VAFB	PUBLICATION NO. AND DATE T.O. 21M-HGM25A-6-1WC-1PE 8 May 1964
WORK UNIT CODE			CARD TIME 00:20
SYS	SUB-SYS AND COMP	ANTENNA TERMINAL INSPECTION NO.360 DAY REQ	POWER <input checked="" type="checkbox"/> OFF <input type="checkbox"/> ON
MH	100	<p>LUBRICATE AS INDICATED ON BACK SIDE OF CARD USING TABLE FOR REFERENCE TO TYPE OF LUBRICANT.</p> <p>ANTENNA PROTECTING AND ELEVATING <u>SET OA-2901/GRW-5</u></p> <p>1. ELECTRIC HOIST ASSEMBLY</p> <p>a. (1) Gear box (fill to level of oil plug), total one place.</p> <p>b. (2) Support bearing, total one place.</p>	

LUBRICATION SYMBOLS

SYMBOL	SPECIFICATION	TYPE OF LUBRICATION
OGR	MIL-L-6086	LUBRICATING OIL, LOW TEMPERATURE LUBRICATING GEAR

APPLICATION SYMBOLS

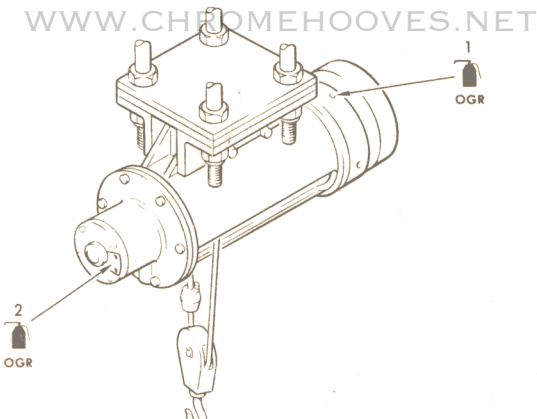


OIL  
CAN

ARROW SYMBOLS



SPECIFIC LUBRICATION POINT



ANTENNA PROTECTING AND ELEVATING SET  
OA-2901/GRW-5 ELECTRIC HOIST ASSEMBLY

CARD NO. 2-40		WORK AREA 10D 10E 10C 10F VAFB	PUBLICATION NO. AND DATE T.O. 21M-HGM25A-6-1WC-1PE 8 May 1964
WORK UNIT CODE			CARD TIME 00:05
SYS	SUB-SYS AND COMP	ANTENNA TERMINAL INSPECTION NO. 360 DAY REQ	POWER <input checked="" type="checkbox"/> OFF <input type="checkbox"/> ON
MH	100	<p>LUBRICATE AS INDICATED ON BACK SIDE OF CARD USING TABLE FOR REFERENCE TO TYPE OF LUBRICANT.</p> <p><u>ANTENNA PROTECTING AND ELEVATING SET OA-2901/GRW-5</u></p> <p>1. WEDGE GATE VALVE.</p> <p>a. (1) Valve, total one place.</p>	

LUBRICATION SYMBOLS

SYMBOL	SPECIFICATION	TYPE OF LUBRICATION
GSG	MIL-G-7118	GREASE, AIRCRAFT GEAR AND ACTUATOR

APPLICATION SYMBOLS

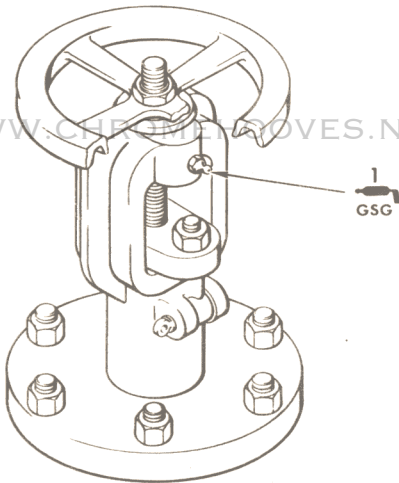


GREASE GUN

ARROW SYMBOLS



SPECIFIC LUBRICATION POINT



ANTENNA PROTECTING AND ELEVATING SET  
OA-2901/GRW-5 WEDGE GATE VALVE

6035L24A

CARD NO. 2-41		WORK AREA 10D 10E 10C 10F VAFB	PUBLICATION NO. AND DATE T.O. 21M-HGM25A-6-1WC-1PE 8 May 1964
WORK UNIT CODE			CARD TIME 00:05
SYS	SUB-SYS AND COMP	ANTENNA TERMINAL INSPECTION NO. 360 DAY REQ	POWER <input checked="" type="checkbox"/> OFF <input type="checkbox"/> ON
MH	14D	<p>LUBRICATE AS INDICATED ON BACK SIDE OF CARD USING TABLE FOR REFERENCE TO TYPE OF LUBRICANT.</p> <p><u>ANTENNA PROTECTING AND ELEVATING SET OA-2901/GRW-5</u></p> <p>1. HYDRAULIC HIGH PRESSURE PUMP</p> <p>a. (1) Motor bearings, total two places.</p> <p>b. (2) Coupling, total one place.</p>	



LUBRICATION SYMBOLS

SYMBOL	SPECIFICATION	TYPE OF LUBRICATION
GSG	MIL-G-7118	GREASE, AIRCRAFT GEAR AND ACTUATOR

APPLICATION SYMBOLS

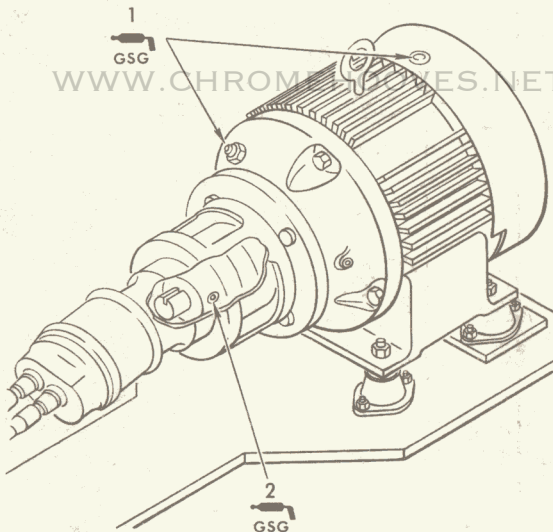


GREASE GUN

ARROW SYMBOLS



SPECIFIC LUBRICATION POINT



ANTENNA PROTECTING AND ELEVATING SET  
 OA-2901/GRW-5 HYDRAULIC HIGH PRESSURE PUMP

6035L25A

CARD NO. 2-42		WORK AREA 10D 10E 10C 10F VAFB	PUBLICATION NO. AND DATE T.O. 21M-HGM25A-6-1WC-1PE 8 May 1964
WORK UNIT CODE			CARD TIME 00:45
SYS	SUB-SYS AND COMP	ANTENNA TERMINAL INSPECTION NO. 360 DAY REQ	POWER <input checked="" type="checkbox"/> OFF <input type="checkbox"/> ON
MH	340	<p>LUBRICATE AS INDICATED ON BACK SIDE OF CARD USING TABLE FOR REFERENCE TO TYPE OF LUBRICANT.</p> <p><u>ANTENNA PROTECTING AND ELEVATING SET OA 2901/GRW-5</u></p> <p>1. CRIB SUSPENSION</p> <p>a. (1) Guide rod bushings, total 24 places.</p>	

WWW.CHROMEHOOVES.NET

LUBRICATION SYMBOLS

SYMBOL	SPECIFICATION	TYPE OF LUBRICATION
GSG	MIL-G-7118	GREASE, AIRCRAFT GEAR AND ACTUATOR

APPLICATION SYMBOLS

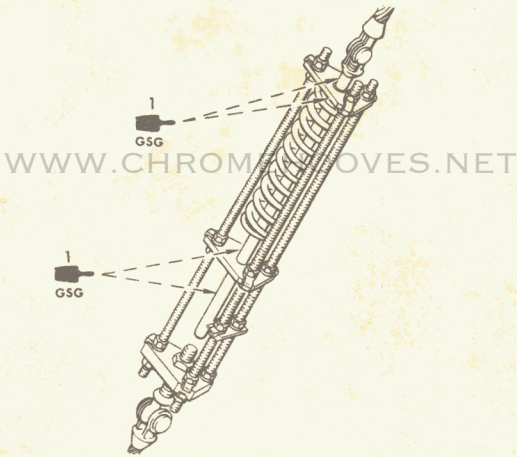


BRUSH

ARROW SYMBOLS



SPECIFIC LUBRICATION POINT PLUS IDENTICAL POINT OR POINTS NOT SHOWN

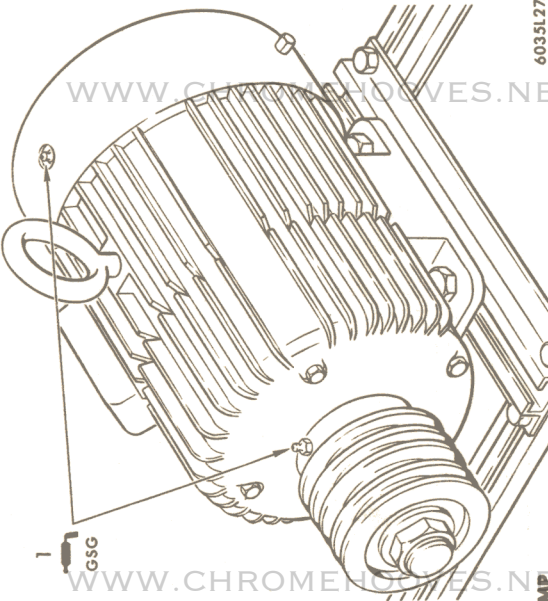


ANTENNA PROTECTING AND ELEVATING SET  
OA-2901/GRW-5 CRIB SUSPENSION

WWW.CHROMEHOOVES.NET

CARD NO. 2-43		WORK AREA 10D 10E 10C 10F VAFB	PUBLICATION NO. AND DATE T.O. 21M-HGM25A-6-1WC-1PE 8 May 1964
WORK UNIT CODE			CARD TIME 00:05
SYS	SUB-SYS AND COMP	ANTENNA TERMINAL INSPECTION NO. 360 DAY REQ	POWER <input checked="" type="checkbox"/> OFF <input type="checkbox"/> ON
MH	130	<p>LUBRICATE AS INDICATED ON BACK SIDE OF CARD USING TABLE FOR REFERENCE TO TYPE OF LUBRICANT.</p> <p><u>ANTENNA PROTECTING AND ELEVATING SET OA-2901/GRW-5</u></p> <p>1. HYDRAULIC LOW PRESSURE PUMP</p> <p>a. (1) Motor bushings, total two places.</p>	

6035L27A



LUBRICATION SYMBOLS		
SYMBOL	SPECIFICATION	TYPE OF LUBRICATION
GSG	MIL-G-7118	GREASE, AIRCRAFT GEAR AND ACTUATOR

APPLICATION SYMBOLS



ARROW SYMBOLS

SPECIFIC LUBRICATION POINT



ANTENNA PROTECTING AND ELEVATING SET  
OA-2901/GRW-5 HYDRAULIC LOW PRESSURE PUMP

CARD NO. 2-44		WORK AREA 10D 10E 10C 10F VAFB	PUBLICATION NO. AND DATE T.O. 21M-HGM25A-6-1WC-1PE 8 May 1964
WORK UNIT CODE			CARD TIME 00:10
SYS	SUB-SYS AND COMP	ANTENNA TERMINAL INSPECTION NO. 360 DAY REQ	POWER <input checked="" type="checkbox"/> OFF <input type="checkbox"/> ON
ME	100	<p>LUBRICATE AS INDICATED ON BACK SIDE OF CARD USING TABLE FOR REFERENCE TO TYPE OF LUBRICANT.</p> <p><u>MISSILE GUIDANCE SET AN/GRW-5</u></p> <p>1. MISSILE TRACKING ANTENNA-RECEIVER-TRANSMITTER GROUP OA-2896A/GRW-5</p> <p>a. (1) Top cam roller, total 12 places.</p> <p>b. (2) Outer rubber seal, total two places.</p>	

LUBRICATION SYMBOLS

SYMBOL	SPECIFICATION	TYPE OF LUBRICATION
GLT	MIL-G-3278	GREASE, AIRCRAFT AND INSTRUMENTS (FOR LOW AND HIGH TEMPERATURES)
	DC-33	GREASE, SILICONE (LIGHT)

APPLICATION SYMBOLS



GREASE GUN

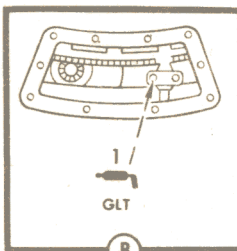
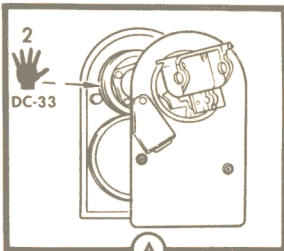
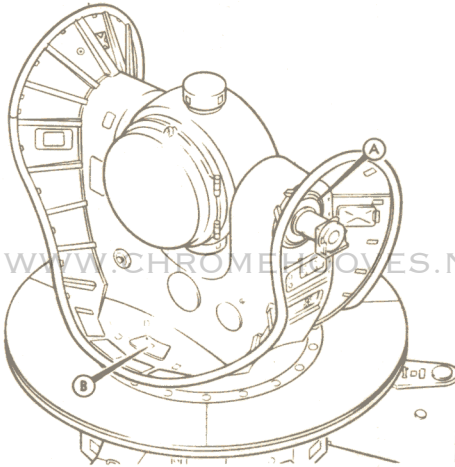


HAND



ARROW SYMBOLS

SPECIFIC LUBRICATION POINT PLUS IDENTICAL POINT OR POINTS NOT SHOWN



MISSILE GUIDANCE SET AN/GRW-5  
MISSILE TRACKING ANTENNA-RECEIVER-TRANSMITTER  
GROUP OA-2896A/GRW-5

CARD NO. 2-45		WORK AREA 10D 10E 10C 10F VAFB	PUBLICATION NO. AND DATE T.O. 21M-HGM25A-6-1WC-1PE 8 May 1964
WORK UNIT CODE			CARD TIME 00:10
SYS	SUB-SYS AND COMP	ANTENNA TERMINAL INSPECTION NO. 360 DAY REQ	POWER <input checked="" type="checkbox"/> OFF <input type="checkbox"/> ON
MH	180	<p>LUBRICATE AS INDICATED ON BACK SIDE OF CARD USING TABLE FOR REFERENCE TO TYPE OF LUBRICANT.</p> <p><u>ANTENNA PROTECTING AND ELEVATING SET OA-2901/GRW-5</u></p> <p>1. GUARD RAIL INSTALLATION</p> <p>a. (1) Plunger, total four places.</p> <p>b. (2) Pin and lever release mechanism, total eight places.</p>	



LUBRICATION SYMBOLS

SYMBOL	SPECIFICATION	TYPE OF LUBRICATION
OGP	MIL-L-7870	LUBRICATING OIL (GENERAL PURPOSE LOW TEMPERATURE)

APPLICATION SYMBOLS

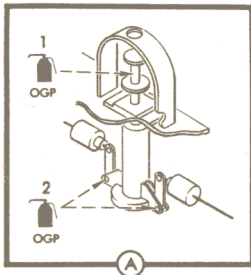
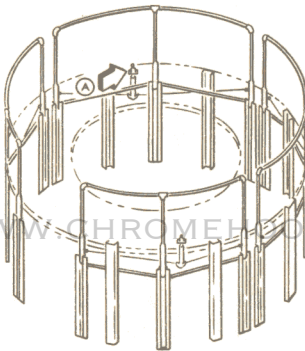


OIL  
CAN

ARROW SYMBOLS



SPECIFIC LUBRICATION POINT PLUS  
IDENTICAL POINT OR POINTS NOT SHOWN



WWW.CHROMEHOOVES.NET

ANTENNA PROTECTING AND ELEVATING SET OA-2901/GRW-5  
GUARD RAIL INSTALLATION

CARD NO. 2-46		WORK AREA 10D 10E 10C 10F VAFB	PUBLICATION NO. AND DATE T.O. 21M-HGM25A-6-1WC-1PE 8 May 1964
WORK UNIT CODE			CARD TIME 00:10
SYS	SUB-SYS AND COMP	ANTENNA TERMINAL  INSPECTION NO. 360 DAY REQ	POWER <input checked="" type="checkbox"/> OFF <input type="checkbox"/> ON
ME	100	<p>LUBRICATE AS INDICATED ON BACK SIDE OF CARD USING TABLE FOR REFERENCE TO TYPE OF LUBRICANT.</p> <p><u>MISSILE GUIDANCE SET AN/GRW-5</u></p> <p>1. MISSILE TRACKING ANTENNA-RECORDER-TRANSMITTER GROUP OA-2896A/GRW-5</p> <p>a. (1) Elevation drive gear, total one place.</p> <p>b. (2) Azimuth drive gear, total one place.</p>	

LUBRICATION SYMBOLS

SYMBOL	SPECIFICATION	TYPE OF LUBRICATION
GLT	MIL-G-3278	GREASE, AIRCRAFT AND INSTRUMENTS (FOR LOW AND HIGH TEMPERATURES)

APPLICATION SYMBOLS

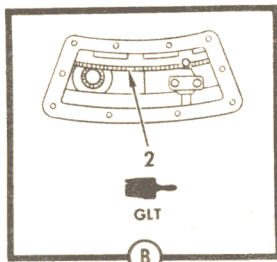
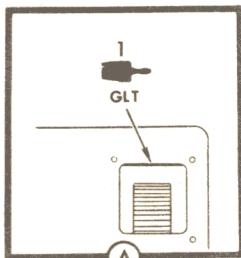
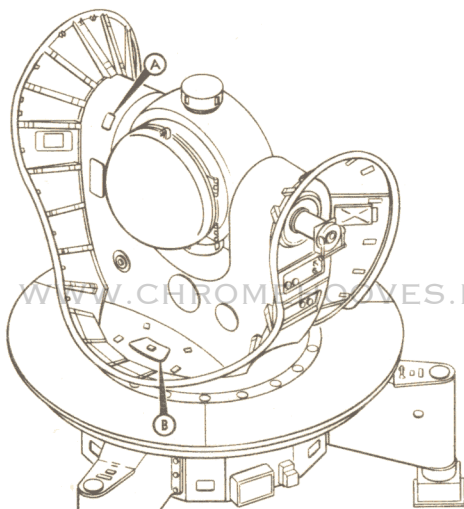


BRUSH

ARROW SYMBOLS



SPECIFIC LUBRICATION POINT



MISSILE GUIDANCE SET AN/GRW-5  
 MISSILE TRACKING ANTENNA-RECEIVER-TRANSMITTER  
 GROUP OA-2896A/GRW-5

CARD NO. 2-47		WORK AREA 10D 10E 10C 10F VAFB	PUBLICATION NO. AND DATE T.O. 21M-HGM25A-6-1WC-1PE 8 May 1964
WORK UNIT CODE			CARD TIME 00:15
SYS	SUB-SYS AND COMP	ANTENNA TERMINAL  INSPECTION NO. 360 DAY REQ	POWER <input checked="" type="checkbox"/> OFF <input type="checkbox"/> ON
ME	100	<p>LUBRICATE AS INDICATED ON BACK SIDE OF CARD USING TABLE FOR REFERENCE TO TYPE OF LUBRICANT.</p> <p><u>MISSILE GUIDANCE SET AN/GRW-5</u></p> <p>1. MISSILE TRACKING ANTENNA-RECEIVER-TRANSMITTER GROUP OA-2896A/GRW-5</p> <p>a. (1) Elevation drive gear assembly bearings, total four places.</p> <p>b. (2) Elevation drive gear assembly gears, total three places.</p> <p>c. (3) Flexible couplings worm gear, total one place.</p>	

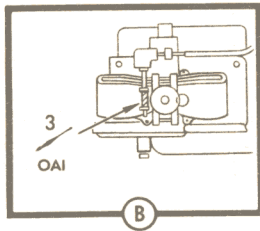
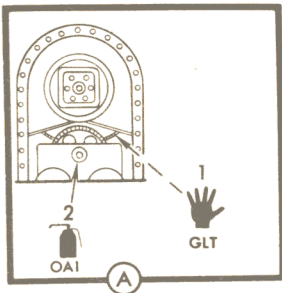
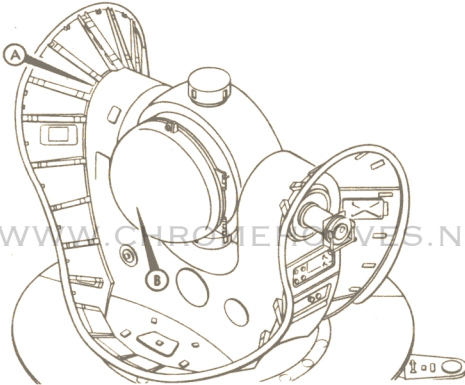
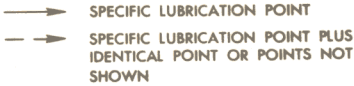
LUBRICATION SYMBOLS

SYMBOL	SPECIFICATION	TYPE OF LUBRICATION
GLT	MIL-G-3278	GREASE, AIRCRAFT AND INSTRUMENTS (FOR LOW AND HIGH TEMPERATURES)
OAI	MIL-L-6085	LUBRICATING OIL, AIRCRAFT INSTRUMENT LOW VOLATILITY

APPLICATION SYMBOLS



ARROW SYMBOLS



MISSILE GUIDANCE SET AN/GRW-5  
 MISSILE TRACKING ANTENNA-RECEIVER-TRANSMITTER  
 GROUP OA-2896A/GRW-5

CARD NO. 2-48		WORK AREA 10D 10E 10C 10F VAFB	PUBLICATION NO. AND DATE T.O. 21M-HGM25A-6-1WC-1PE 8 May 1964
WORK UNIT CODE			CARD TIME 00:45
SYS	SUB-SYS AND COMP	ANTENNA TERMINAL INSPECTION NO. 360 DAY REQ	POWER <input checked="" type="checkbox"/> OFF <input type="checkbox"/> ON
MH	100	<p>LUBRICATE AS INDICATED ON BACK SIDE OF CARD USING TABLE FOR REFERENCE TO TYPE OF LUBRICANT.</p> <p><u>ANTENNA PROTECTING AND ELEVATING SET OA-2901/GRW/5</u></p> <p>1. LID TRUNNION INSTALLATION T.O. 21M-HGM25A-2-7-7</p> <p>a. (1) Four bushings, total eight places.</p> <p>b. (2) Four hinge bearings, total eight places.</p>	

**LUBRICATION SYMBOLS**

SYMBOL	SPECIFICATION	TYPE OF LUBRICATION
GSG	MIL-G-7118	GREASE, AIRCRAFT GEAR AND ACTUATOR

**APPLICATION SYMBOLS**

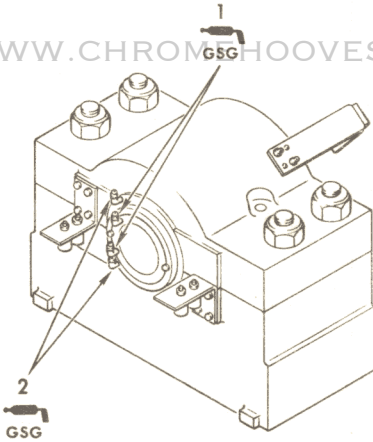


GREASE  
GUN

**ARROW SYMBOLS**



SPECIFIC LUBRICATION POINT



**ANTENNA PROTECTING AND  
ELEVATING SET OA-2901/GRW-5  
LID TRUNNION INSTALLATION**

CARD NO. 2-49		WORK AREA 2B	PUBLICATION NO. AND DATE T.O. 21M-HGM25A-6-1WC-1PE 8 May 1964	
WORK UNIT CODE			CARD TIME 00:20	
SYS	SUB-SYS AND COMP	MISSILE SILO INSPECTION NO. 360 DAY REQ		POWER <input checked="" type="checkbox"/> OFF <input type="checkbox"/> ON
BB	25H	<p>LUBRICATE AS INDICATED ON BACK SIDE OF CARD USING TABLE FOR REFERENCE TO TYPE OF LUBRICANT.</p> <p><u>CRIB LOCKING SYSTEM</u></p> <p>1. HORIZONTAL JACK ASSEMBLY (VAFB)</p> <p>a. (1) Four worm gears and bearings, total four places.</p> <p>b. (2) Four cam follower spherical and cam roller bearings, total four places.</p>		



**LUBRICATION SYMBOLS**

SYMBOL	SPECIFICATION	TYPE OF LUBRICATION
GSG	MIL-L-7118	GREASE, AIRCRAFT GEAR AND ACTUATOR

**APPLICATION SYMBOLS**

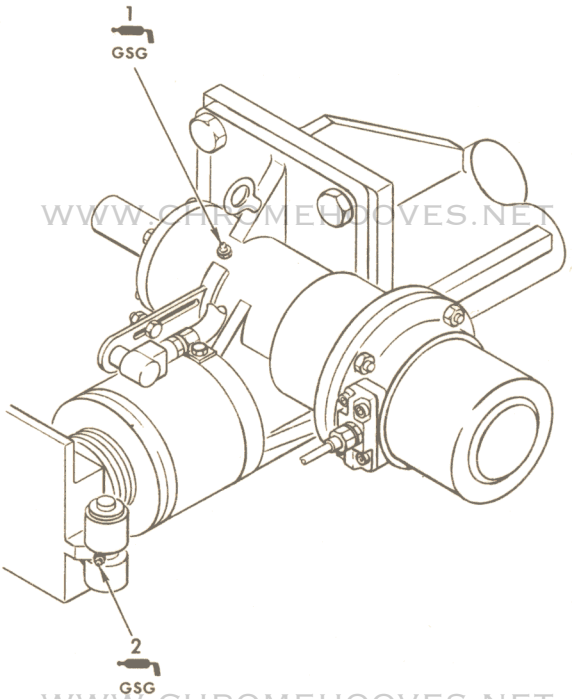


GREASE GUN

**ARROW SYMBOLS**



SPECIFIC LUBRICATION POINT



**CRIB LOCKING SYSTEM  
HORIZONTAL JACK ASSEMBLY**

6035L13A

CARD NO. 2-50		WORK AREA 2B	PUBLICATION NO. AND DATE T.O. 21M-HGM25A-6-1WC-1PE 8 May 1964	
WORK UNIT CODE				CARD TIME 00:20
SYS	SUB-SYS AND COMP	MISSILE SILO INSPECTION NO. 360 DAY REQ		POWER' <input checked="" type="checkbox"/> OFF <input type="checkbox"/> ON
BB	25H	<p>LUBRICATE AS INDICATED ON BACK SIDE OF CARD USING TABLE FOR REFERENCE TO TYPE OF LUBRICANT.</p> <p><u>CRIB LOCKING SYSTEM</u></p> <p>1. HORIZONTAL JACK ASSEMBLY (LAFB 724TH/725TH SQDN, EAFB, BAFB, LAFB, MHAFFB)</p> <p>a. (1) Four cam follower spherical and cam roller bearings, total four places.</p> <p>b. (2) Four worm gears and bearings, total four places.</p>		

**LUBRICATION SYMBOLS**

SYMBOL	SPECIFICATION	TYPE OF LUBRICATION
GSG	MIL-G-7118	GREASE, AIRCRAFT GEAR AND ACTUATOR
HAL	HALOCARBON 25-10M-5A	GREASE, GENERAL PURPOSE, NORMAL LOAD

**APPLICATION SYMBOLS**

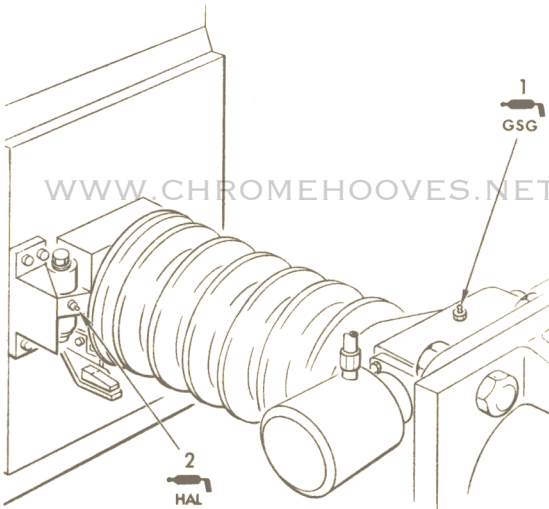


GREASE GUN

**ARROW SYMBOLS**



SPECIFIC LUBRICATION POINT



**CRIB LOCKING SYSTEM HORIZONTAL JACK ASSEMBLY**

6035L59A

CARD NO. 2-51		WORK AREA 2B	PUBLICATION NO. AND DATE T.O. 21M-HGM25A-6-1WC-1PE 8 May 1964	
WORK UNIT CODE				CARD TIME 00:20
SYS	SUB-SYS AND COMP	MISSILE SILO INSPECTION NO.360 DAY REQ		POWER <input checked="" type="checkbox"/> OFF <input type="checkbox"/> ON
BB	170	<p>LUBRICATE AS INDICATED ON BACK SIDE OF CARD USING TABLE FOR REFERENCE TO TYPE OF LUBRICANT.</p> <p><u>LAUNCHER PLATFORM</u></p> <p>1. DRIVE AND CONTROL SYSTEM</p> <p>a. (1) Flexible couplings, total two places.</p> <p>b. (2) Flexible couplings, total two places.</p>		

**LUBRICATION SYMBOLS**

SYMBOL	SPECIFICATION	TYPE OF LUBRICATION
GSG	MIL-G-7118	GREASE, AIRCRAFT GEAR AND ACTUATOR
	MIL-L-002105 GRADE 90	OIL, HEAVY DUTY

WWW.CHROMEHOOVES.NET

**APPLICATION SYMBOLS**



OIL CAN

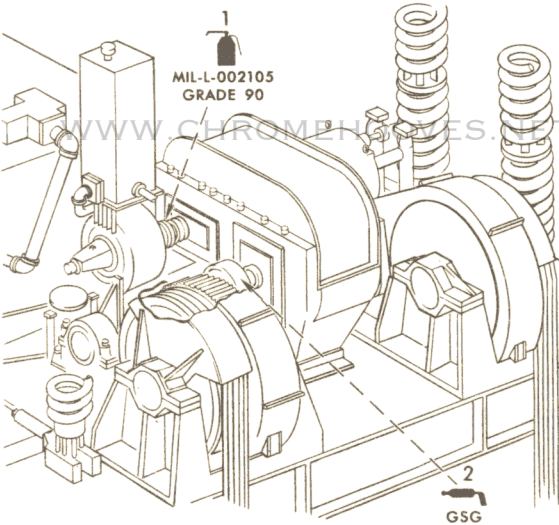


GREASE GUN

**ARROW SYMBOLS**



SPECIFIC LUBRICATION POINT PLUS IDENTICAL POINT OR POINTS NOT SHOWN



WWW.CHROMEHOOVES.NET

**LAUNCHER PLATFORM DRIVE AND CONTROL SYSTEM**

CARD NO. 2-52		WORK AREA 2B	PUBLICATION NO. AND DATE T.O. 21M-HGM25A-6-1WC-1PE 8 May 1964	
WORK UNIT CODE				CARD TIME 00:20
SYS	SUB-SYS AND COMP	MISSILE SILO INSPECTION NO. 360 DAY REQ		POWER <input checked="" type="checkbox"/> OFF <input type="checkbox"/> ON
BA	91A	<p>LUBRICATE AS INDICATED ON BACK SIDE OF CARD USING TABLE FOR REFERENCE TO TYPE OF LUBRICANT.</p> <p><u>LAUNCHER PLATFORM LOCKING SYSTEM</u></p> <p>1. VERTICAL LOCKS (LAFB 724TH/ 725TH SQDN, EAFB, BAFB, LAFB, MHAFB)</p> <p>a. (1) Four jackscrews, total four places.</p> <p>b. (2) Four self-aligning blocks, total eight places.</p>		

**LUBRICATION SYMBOLS**

SYMBOL	SPECIFICATION	TYPE OF LUBRICATION
MOS <sub>2</sub>	MIL-L-7866A	MOLYBDENUM DISULFIDE POWDER
GSG	MIL-G-7118	GREASE, AIRCRAFT GEAR AND ACTUATOR

**APPLICATION SYMBOLS**



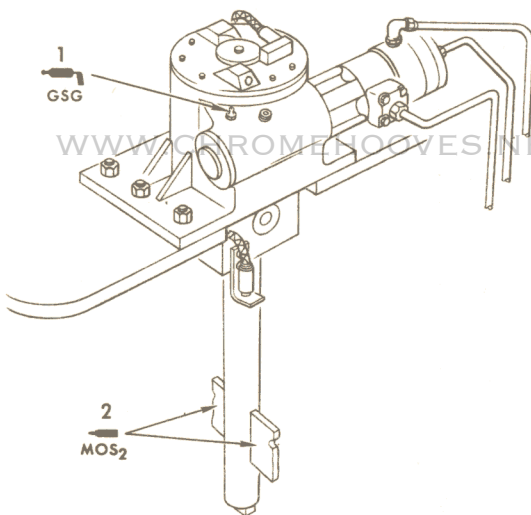
DRY



GREASE  
GUN

**ARROW SYMBOLS**

SPECIFIC LUBRICATION POINT



**LAUNCHER PLATFORM LOCKING  
SYSTEM VERTICAL LOCKS**

CARD NO. 2-53		WORK AREA 2B	PUBLICATION NO. AND DATE T.O. 21M-HGM25A-6-1WC-1PE 8 May 1964	
WORK UNIT CODE				CARD TIME 00:20
SYS	SUB-SYS AND COMP	MISSILE SILO INSPECTION NO. 360 DAY REQ		POWER <input checked="" type="checkbox"/> OFF <input type="checkbox"/> ON
BB	25 F	<p>LUBRICATE AS INDICATED ON BACK SIDE OF CARD USING TABLE FOR REFERENCE TO TYPE OF LUBRICANT.</p> <p><u>CRIB LOCKING SYSTEM</u></p> <p>1. VERTICAL JACK ASSEMBLY</p> <p>a. (1) Head jack assembly, total four places.</p> <p>b. (2) Worm gear and bearings, total four places.</p>		



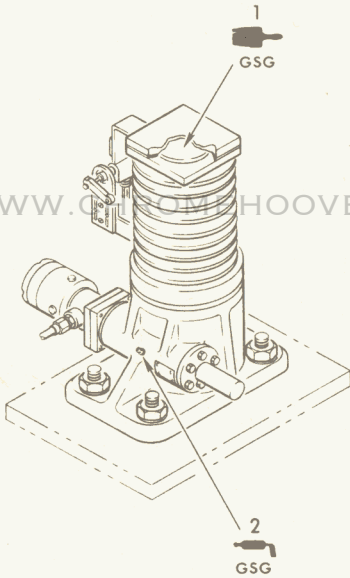
**LUBRICATION SYMBOLS**

SYMBOL	SPECIFICATION	TYPE OF LUBRICATION
GSG	MIL-G-7118	GREASE, AIRCRAFT GEAR AND ACTUATOR

**APPLICATION SYMBOLS**



**ARROW SYMBOLS**



WWW.CHROMEHOOVES.NET  
**CRIB LOCKING SYSTEM  
 VERTICAL JACK ASSEMBLY**

6035L61A

CARD NO. 2-54		WORK AREA 4A	PUBLICATION NO. AND DATE T.O. 21M-HGM25A-6-1WC-1PE 8 May 1964	
WORK UNIT CODE			CARD TIME 00:25	
SYS	SUB-SYS AND COMP.	EQUIPMENT TERMINAL INSPECTION NO. 360 DAY REQ		POWER <input checked="" type="checkbox"/> OFF <input type="checkbox"/> ON
BA	21B	<p>LUBRICATE AS INDICATED ON BACK SIDE OF CARD USING TABLE FOR REFERENCE TO TYPE OF LUBRICANT.</p> <p><u>HYDRAULIC DISTRIBUTION SYSTEM</u></p> <p>1. HIGH PRESSURE PUMPS (5A19A1PM1005 thru 5A19A1PM1008)</p> <p>a. (1) Four couplings, total eight places.</p> <p>b. (2) Four motor shaft bearings, total eight places.</p>		

**LUBRICATION SYMBOLS**

SYMBOL	SPECIFICATION	TYPE OF LUBRICATION
GSG	MIL-G-7118	GREASE, AIRCRAFT GEAR AND ACTUATOR
GLT	MIL-G-3278	GREASE, GENERAL PURPOSE LIGHT LEAD

**APPLICATION SYMBOLS**

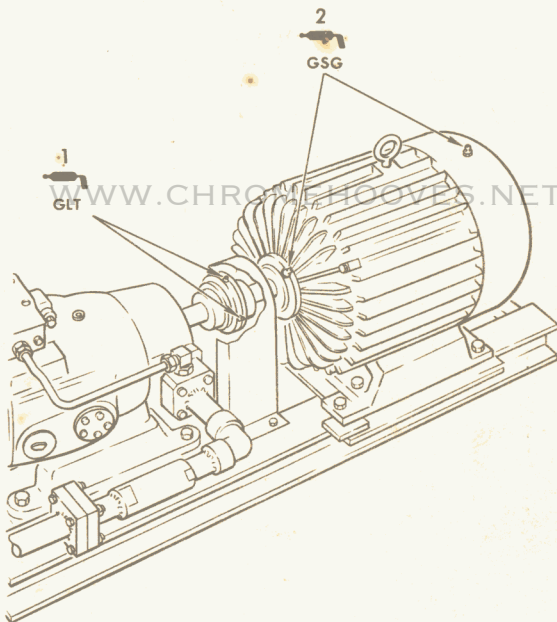


GREASE GUN

**ARROW SYMBOLS**



SPECIFIC LUBRICATION POINT



WWW.CHROMEHOOVES.NET

**HYDRAULIC DISTRIBUTION SYSTEM  
HIGH PRESSURE PUMPS**

6035L62A

CARD NO. 2-55		WORK AREA 4A	PUBLICATION NO. AND DATE T.O. 21M-HGM25A-6-1WC-1PE 8 May 1964	
WORK UNIT CODE			CARD TIME 00:10	
SYS	SUB-SYS AND COMP	EQUIPMENT TERMINAL INSPECTION NO. 360 DAY REQ		POWER <input checked="" type="checkbox"/> OFF <input type="checkbox"/> ON
BA	200	<p>LUBRICATE AS INDICATED ON BACK SIDE OF CARD USING TABLE FOR REFERENCE TO TYPE OF LUBRICANT.</p> <p><u>HYDRAULIC DISTRIBUTION SYSTEM</u></p> <p>1. HAND OPERATED VALVES</p> <p>a. (1) Valve shaft bearings, total five places.</p> <p>b. (2) Valve shaft, total five places.</p>		

LUBRICATION SYMBOLS

SYMBOL	SPECIFICATION	TYPE OF LUBRICATION
GSG	MIL-G-7118	GREASE, AIRCRAFT GEAR AND ACTUATOR
MOS <sub>2</sub>	MIL-L-7866A	MOLYBDENUM DISULFIDE POWDER

APPLICATION SYMBOLS



BRUSH

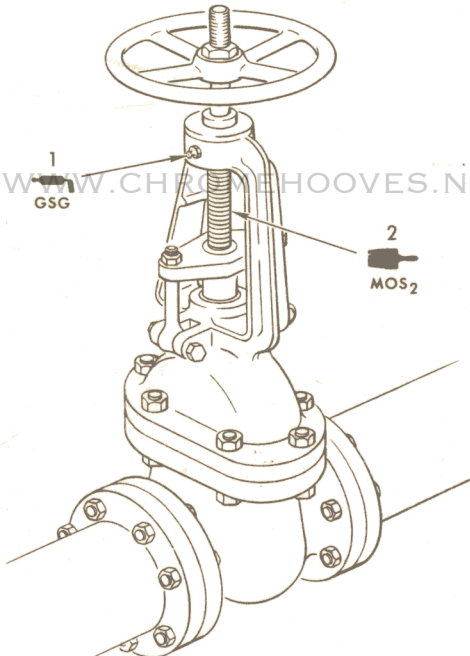


GREASE GUN

ARROW SYMBOLS



SPECIFIC LUBRICATION POINT



WWW.CHROMEHOOVES.NET

HYDRAULIC DISTRIBUTION SYSTEM  
HAND OPERATED VALVES

6035L63A

CARD NO. 2-56		WORK AREA 4A	PUBLICATION NO. AND DATE T.O. 21M-HGM25A-6-1WC-1PE 8 May 1964	
WORK UNIT CODE				CARD TIME 00:20
SYS	SUB-SYS AND COMP	EQUIPMENT TERMINAL INSPECTION NO. 360 DAY REQ.		POWER <input checked="" type="checkbox"/> OFF <input type="checkbox"/> ON
BA	23C	<p>LUBRICATE AS INDICATED ON BACK SIDE OF CARD USING TABLE FOR REFERENCE TO TYPE OF LUBRICANT.</p> <p><u>HYDRAULIC DISTRIBUTION SYSTEM</u></p> <p>1. SUPERCHARGE PUMP ASSEMBLY (5A19APM1001 and 5A19A1PM1002)</p> <p>a. (1) Two motors, total four places.</p> <p>b. (2) Two couplings, total two places.</p>		

LUBRICATION SYMBOLS

SYMBOL	SPECIFICATION	TYPE OF LUBRICATION
GSG	MIL-G-7118	GREASE, AIRCRAFT GEAR AND ACTUATOR
SA	MIL-G-18709	GREASE, BALL BEARING

APPLICATION SYMBOLS

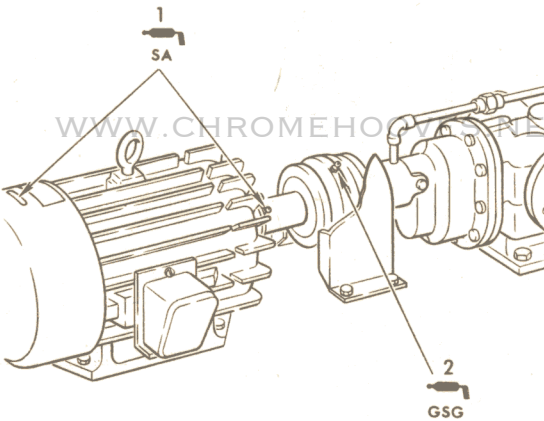


GREASE GUN

ARROW SYMBOLS



SPECIFIC LUBRICATION POINT



WWW.CHROMEHOOVES.NET

HYDRAULIC DISTRIBUTION SYSTEM  
SUPERCHARGE PUMP ASSEMBLY

6035L7A

CARD NO. 2-57		WORK AREA 4A	PUBLICATION NO. AND DATE T.O. 21M-HGM25A-6-1WC-1PE 8 May 1964	
WORK UNIT CODE			CARD TIME 00:10	
SYS	SUB-SYS AND COMP	EQUIPMENT TERMINAL INSPECTION NO. 360 DAY REQ	POWER <input checked="" type="checkbox"/> OFF <input type="checkbox"/> ON	
BA	200	<p>LUBRICATE AS INDICATED ON BACK SIDE OF CARD USING TABLE FOR REFERENCE TO TYPE OF LUBRICANT.</p> <p><u>HYDRAULIC DISTRIBUTION SYSTEM</u></p> <p>1. STANDBY PUMP</p> <p style="text-align: center;"><u>WARNING</u></p> <p>Failure to shut off electrical power can result in injury to personnel and damage to equipment.</p> <p>a. Set circuit breaker (5A10A4CB) to OFF.</p> <p>b. (1) Flexible shaft coupling, total one place.</p> <p>c. Set circuit breaker (5A10A4CB) to ON.</p>		



**LUBRICATION SYMBOLS**

SYMBOL	SPECIFICATION	TYPE OF LUBRICATION
GSG	MIL-G-7118	GREASE, AIRCRAFT GEAR AND ACTUATOR

WWW.CHROMEHOOVES.NET

**APPLICATION SYMBOLS**

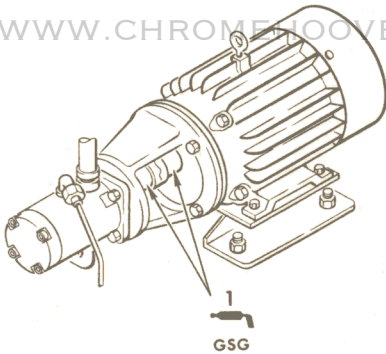


GREASE  
GUN

**ARROW SYMBOLS**



SPECIFIC LUBRICATION POINT



WWW.CHROMEHOOVES.NET

WWW.CHROMEHOOVES.NET

**HYDRAULIC DISTRIBUTION SYSTEM  
STANDBY PUMP**

CARD NO. 2-58		WORK AREA 4A	PUBLICATION NO. AND DATE T.O. 21M-HGM25A-6-1WC-1PE 8 May 1964
WORK UNIT CODE			CARD TIME 00:05
SYS	SUB-SYS AND COMP	EQUIPMENT TERMINAL  INSPECTION NO. 360 DAY REQ	POWER <input checked="" type="checkbox"/> OFF <input type="checkbox"/> ON
BA	200	<p>LUBRICATE AS INDICATED ON BACK SIDE OF CARD USING TABLE FOR REFERENCE TO TYPE OF LUBRICANT.</p> <p><u>HYDRAULIC DISTRIBUTION SYSTEM</u></p> <p>1. MOTOR DRIVEN GATE VALVE (5A19A1VA1116 and 5A19A1VA1117)</p> <p>a. (1) Two valve shafts, total two places.</p> <p>b. (2) Two worm gear drives, total two places.</p>	

LUBRICATION SYMBOLS

SYMBOL	SPECIFICATION	TYPE OF LUBRICATION
GSG	MIL-G-7118	GREASE, AIRCRAFT GEAR AND ACTUATOR

APPLICATION SYMBOLS



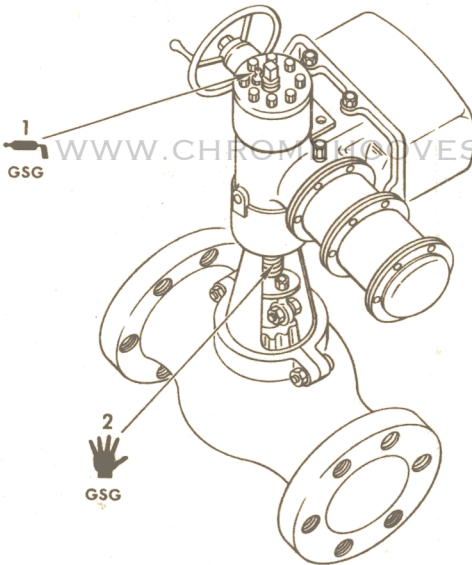
GREASE  
GUN

HAND

ARROW SYMBOLS



SPECIFIC LUBRICATION POINT



HYDRAULIC DISTRIBUTION SYSTEM  
MOTOR DRIVEN GATE VALVE

CARD NO. 2-59		WORK AREA 4C	PUBLICATION NO. AND DATE T.O. 21M-HGM25A-6-1WC-1PE 8 May 1964	
WORK UNIT CODE			CARD TIME 00:05	
SYS	SUB-SYS AND COMP	EQUIPMENT TERMINAL INSPECTION NO. 360 DAY REQ		POWER <input checked="" type="checkbox"/> OFF <input type="checkbox"/> ON
		LUBRICATE AS INDICATED ON BACK SIDE OF CARD USING TABLE FOR REFERENCE TO TYPE OF LUBRICANT.		
		<u>LAUNCH CONTROL FACILITIES</u>		
NC	300	1. HYDRAULIC PUMPING UNIT A/E 27A-2		
NC	340	a. (1) Motor, total two places. b. (2) Coupling, total one place.		

**LUBRICATION SYMBOLS**

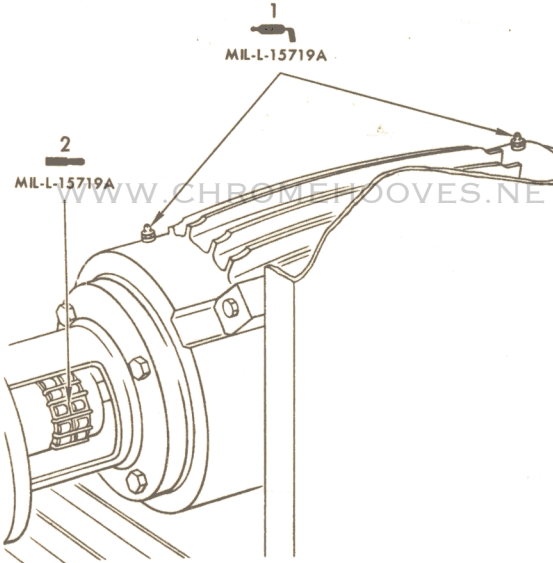
SYMBOL	SPECIFICATION	TYPE OF LUBRICATION
	MIL-L-15719A	GREASE, SILICON INSULATED, ELECTRIC MOTOR

**APPLICATION SYMBOLS**



SPATULA      GREASE GUN

**ARROW SYMBOLS**



**LAUNCH CONTROL FACILITIES  
HYDRAULIC PUMPING UNIT A/E 27A-2**

CARD NO. 2-60		WORK AREA 4C	PUBLICATION NO. AND DATE T.O. 21M-HGM25A-6-1WC-1PE 8 May 1964	
WORK UNIT CODE				CARD TIME 00:10
SYS	SUB-SYS AND COMP	EQUIPMENT TERMINAL INSPECTION NO. 360 DAY REQ		POWER <input checked="" type="checkbox"/> OFF <input type="checkbox"/> ON
NC	200	<p>LUBRICATE AS INDICATED ON BACK SIDE OF CARD USING TABLE FOR REFERENCE TO TYPE OF LUBRICANT.</p> <p><u>LAUNCH CONTROL FACILITIES</u></p> <p>1. MISSILE AIR CONDITIONING PIPING INSTALLATION (LAFB 724TH/725TH SQDN, BAFB, LAFB, MHA FB)</p> <p>a. (1) Three main blowers and top ducts manual dampers, total three places.</p>		

LUBRICATION SYMBOLS

SYMBOL	SPECIFICATION	TYPE OF LUBRICATION
OPS	MIL-L-644B	LUBRICATING OIL, GENERAL PURPOSE, PRESERVATIVE

APPLICATION SYMBOLS

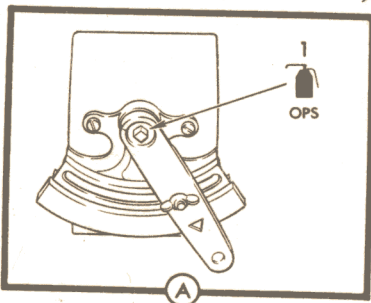
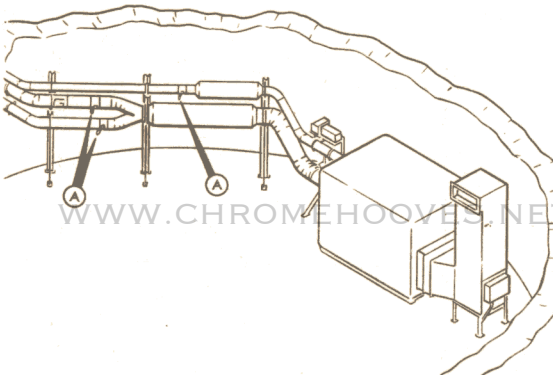


OIL  
CAN

ARROW SYMBOLS



SPECIFIC LUBRICATION POINT



WWW.CHROMEHOOVES.NET  
 LAUNCH CONTROL FACILITIES MISSILE  
 AIR CONDITIONING PIPING INSTALLATION

CARD NO. 2-61		WORK AREA 4C	PUBLICATION NO. AND DATE T.O. 21M-HGM25A-6-1WC-1PE 8 May 1964	
WORK UNIT CODE			CARD TIME 00:05	
SYS	SUB-SYS AND COMP	EQUIPMENT TERMINAL INSPECTION NO. 360 DAY REQ		POWER <input checked="" type="checkbox"/> OFF <input type="checkbox"/> ON
NC	200	<p>LUBRICATE AS INDICATED ON BACK SIDE OF CARD USING TABLE FOR REFERENCE TO TYPE OF LUBRICANT.</p> <p><u>LAUNCH CONTROL FACILITIES</u></p> <p>1. MISSILE AIR CONDITIONING PIPING INSTALLATION (LAFB 724TH/725TH SQDN, EAFB, BAFB)</p> <p>a. (1) Main air duct damper, motor linkage, total four places.</p> <p>b. (2) Main air duct damper motor linkage, total one place.</p>		



LUBRICATION SYMBOLS

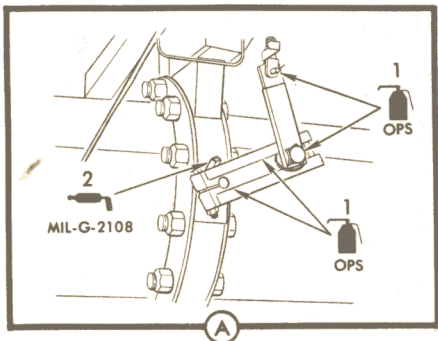
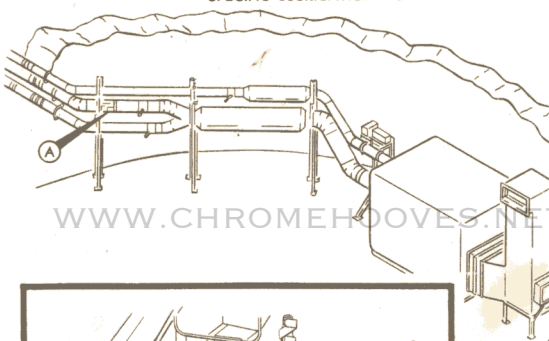
SYMBOL	SPECIFICATION	TYPE OF LUBRICATION
OPS	MIL-L-644B	LUBRICATING OIL, GENERAL PURPOSE, PRESERVATIVE
	MIL-G-2108	GREASE, GENERAL PURPOSE NO. 2

APPLICATION SYMBOLS



ARROW SYMBOLS

→ SPECIFIC LUBRICATION POINT



LAUNCH CONTROL FACILITIES MISSILE  
AIR CONDITIONING PIPING INSTALLATION

CARD NO. 2-62		WORK AREA 4C	PUBLICATION NO. AND DATE T.O. 21M-HGM25A-6-1WC-1PE 8 May 1964	
WORK UNIT CODE				CARD TIME 00:02
SYS	SUB-SYS AND COMP	EQUIPMENT TERMINAL INSPECTION NO.360 DAY REQ.		POWER <input checked="" type="checkbox"/> OFF <input type="checkbox"/> ON
NC	200	<p>LUBRICATE AS INDICATED ON BACK SIDE OF CARD USING TABLE FOR REFERENCE TO TYPE OF LUBRICANT.</p> <p><u>LAUNCH CONTROL FACILITIES</u></p> <p>1. MISSILE AIR CONDITIONING PIPING INSTALLATION (MHAFB)</p> <p>a. (1) Main air duct damper, motor linkage, total three places.</p>		

LUBRICATION SYMBOLS

SYMBOL	SPECIFICATION	TYPE OF LUBRICATION
OPS	MIL-L-644B	LUBRICATING OIL, GENERAL PURPOSE PRESERVATIVE

APPLICATION SYMBOLS

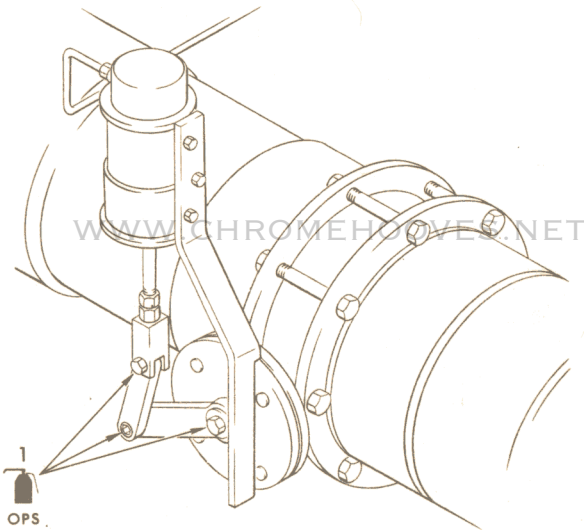


OIL  
CAN

ARROW SYMBOLS



SPECIFIC LUBRICATION POINT



LAUNCH CONTROL FACILITIES  
MISSILE AIR CONDITIONING  
PIPING INSTALLATION

6035L68A

CARD NO. 2-63		WORK AREA 4C	PUBLICATION NO. AND DATE T.O. 21M-HGM25A-6-1WC-1PE 8 May 1964	
WORK UNIT CODE				CARD TIME 00:05
SYS	SUB-SYS AND COMP	EQUIPMENT TERMINAL INSPECTION NO. 360 DAY REQ		POWER <input checked="" type="checkbox"/> OFF <input type="checkbox"/> ON
NC	200	<p>LUBRICATE AS INDICATED ON BACK SIDE OF CARD USING TABLE FOR REFERENCE TO TYPE OF LUBRICANT.</p> <p><u>LAUNCH CONTROL FACILITIES</u></p> <p>1. MISSILE AIR CONDITIONING PIPING INSTALLATION (LAFB 724TH/725TH SQDN, BAFB, LAFB, MHAFB)</p> <p>a. (1) Intake damper linkage, total one place.</p> <p>b. (2) Motor linkage, total three places.</p>		

**LUBRICATION SYMBOLS**

SYMBOL	SPECIFICATION	TYPE OF LUBRICATION
OPS	MIL-L-644B	LUBRICATING OIL, GENERAL PURPOSE, PRESERVATIVE

**APPLICATION SYMBOLS**

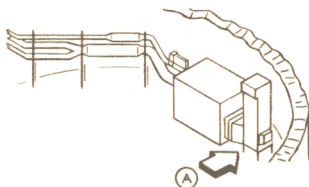


OIL  
CAN

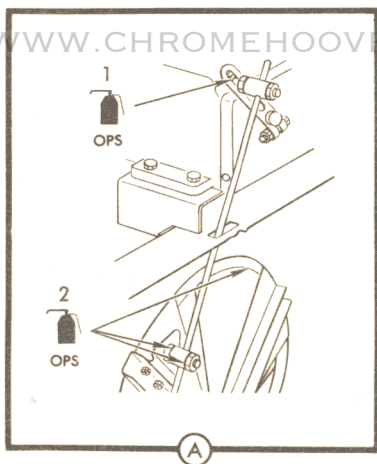
**ARROW SYMBOLS**



SPECIFIC LUBRICATION POINT



WWW.CHROMEHOOVES.NET



WWW.CHROMEHOOVES.NET  
**LAUNCH CONTROL FACILITIES  
 MISSILE AIR CONDITIONING  
 PIPING INSTALLATION**

CARD NO. 2-64		WORK AREA 11A	PUBLICATION NO. AND DATE T.O. 21M-HGM25A-6-1WC-1PE 8 May 1964	
WORK UNIT CODE			CARD TIME 00:05	
SYS	SUB-SYS AND COMP	FUEL STORAGE AREA  INSPECTION NO.360 DAY REQ	POWER <input checked="" type="checkbox"/> OFF <input type="checkbox"/> ON	
KA	213	<p>LUBRICATE AS INDICATED ON BACK SIDE OF CARD USING TABLE FOR REFERENCE TO TYPE OF LUBRICANT.</p> <p><u>RP-1 FUEL SUB-SYSTEM</u></p> <p>1. FUEL TRANSFER PUMP (P-110)</p> <p>a. (1) Motor bearings, total two places.</p>		

T. O. 21M-HGM25A-6-IWC-1PE

LUBRICATION SYMBOLS

SYMBOL	SPECIFICATION	TYPE OF LUBRICATION
	MIL-L-15719A	GREASE, SILICON INSULATED, ELECTRIC MOTOR

APPLICATION SYMBOLS

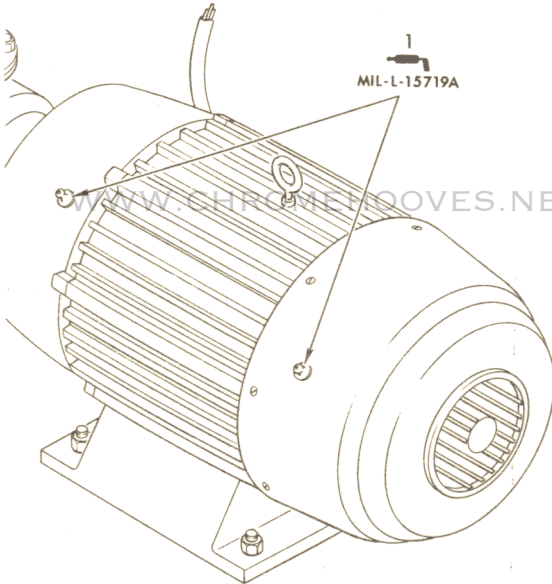


GREASE  
GUN

ARROW SYMBOLS



SPECIFIC LUBRICATION POINT



WWW.CHROMEHOOVES.NET

RP-1 FUEL SUBSYSTEM  
FUEL TRANSFER PUMP (P-110)

6035L70A

CARD NO. 2-65		WORK AREA 15	PUBLICATION NO. AND DATE T.O. 21M-HGM25A-6-1WC-1PE 8 May 1964	
WORK UNIT CODE			CARD TIME 00:15	
SYS	SUB-SYS AND COMP	SURFACE INSPECTION NO. 360 DAY REQ		POWER <input checked="" type="checkbox"/> OFF <input type="checkbox"/> ON
KA	210	<p>LUBRICATE AS INDICATED ON BACK SIDE OF CARD USING TABLE FOR REFERENCE TO TYPE OF LUBRICANT.</p> <p><u>RP-1 FUEL SUB-SYSTEM</u></p> <p>1. CONTROL VALVE</p> <p>a. (1) Four plug valves, total four places.</p>		



**LUBRICATION SYMBOLS**

SYMBOL	SPECIFICATION	TYPE OF LUBRICATION
	MIL-G-2108	GREASE, GENERAL PURPOSE NO. 2

**APPLICATION SYMBOLS**

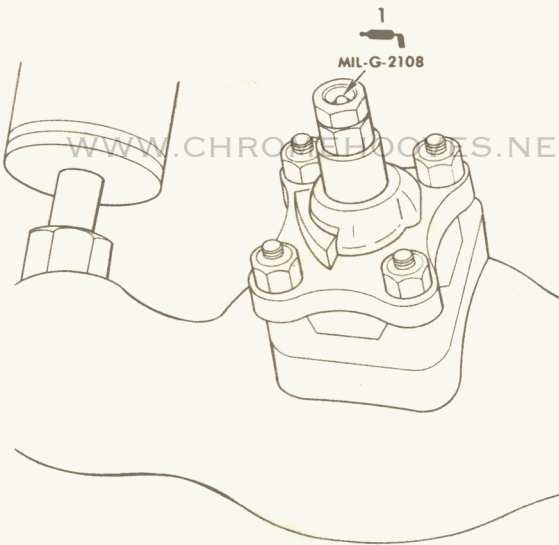


GREASE  
GUN

**ARROW SYMBOLS**



SPECIFIC LUBRICATION POINT



WWW.CHROMEHOOVES.NET

**RP-1 FUEL SUBSYSTEM CONTROL VALVE**

6035L71A

TECHNICAL ORDER CHANGE NOTICE

(1) TOPCN  (2) TOFCN  (3) TODN  (4) TOQCN  (5) TOCN   
 (6) URGENT  (7) SECRET  (8) SHEET 1 OF 1  
 ROUTINE  UNCLASSIFIED   
 EXPEDITE  (9) PROGRAM Titan I  
 (10) TITLE PHASED INSPECTION AND LUBRICATION WORK CARDS LAUNCH COMPLEX  
 (11) T.O. NO. 21M-HGM25A-6-1WC-1PE (12) BASIC DATE: 8 May 1964  
 (13) CHG. NO. 6-1WC-1PE TOCN DEN-100 (14) DATE: TOFCN \_\_\_\_\_ TOCN \_\_\_\_\_  
 (15) EFFECTIVITY All Bases (16) INITIATOR R. Ashbeck

(17) Insert attached changed/added pages dated 248 Pages are affected by this change. (18) TOCN's incorporating this change in other T.O.'s are:

(19) List of changed/added pages contained herein. T.O. 21M-HGM25A-6-1, DEN-100

- Title
- A thru B/C
- i
- ia
- ii thru iih
- ij
- iii/iiia
- iv thru iiv v
- 1-1 thru 1-77
- 2-1
- 2-2 with Backup 2-2 thru 2-65 with Backup 2-65

WWW.CHROMEHOOVES.NET  
 THIS PUBLICATION REPLACES T.O. 21M-HGM25A-6-1WC-1PE, 1 JANUARY 1964.

(20) PRELIMINARY APPROVAL	TMC	(21) OTHER AFFECTED ASSOCIATES
ENGINEERING	<i>R. Judge</i>	
WRITER	<i>R. Ashbeck</i>	
SAFETY REP.	<i>A. Stone</i>	
TOCU CHAIRMAN		
AFLC		

(22) FINAL RELEASE AUTHORITY	(23) VERIFICATION REQUIREMENTS
QUAL. ASSURANCE	<input type="checkbox"/> Previously verified data not affected
UNIT SUPERVISOR <i>H. Young 097 5/26/64</i>	<input type="checkbox"/> Additional verification required
CTOCU <i>(W. ...)</i>	<input type="checkbox"/> Verified at - _____
AFTOSB <i>(Walt ... 27 May 64)</i>	<input checked="" type="checkbox"/> Verification not required

(24) REASON FOR CHANGE This TOCN incorporates TOFCN T-3 in its entirety, initiated as a result of meeting held at Lowry AFB, 29-30 April 1964 and incorporates AFTO 22s 395SMS-64-102R, 451-64-382R, 395SMS-64-75R and 395SMS-64-70R. This TOCN also incorporates BBAMA/AMF Input #0584 in its entirety. This publication replaces T.O. 21M-HGM25A-6-1WC-1PE, 1 January 1964. Verification Not Required. *gwh*

FS-1180 (10-63)