

WWW.CHROMEHOOVES.NET



Fig I 22 March 1960 Complex 1A  
Access Road Construction - Looking Toward Hiway 51

WWW.CHROMEHOOVES.NET

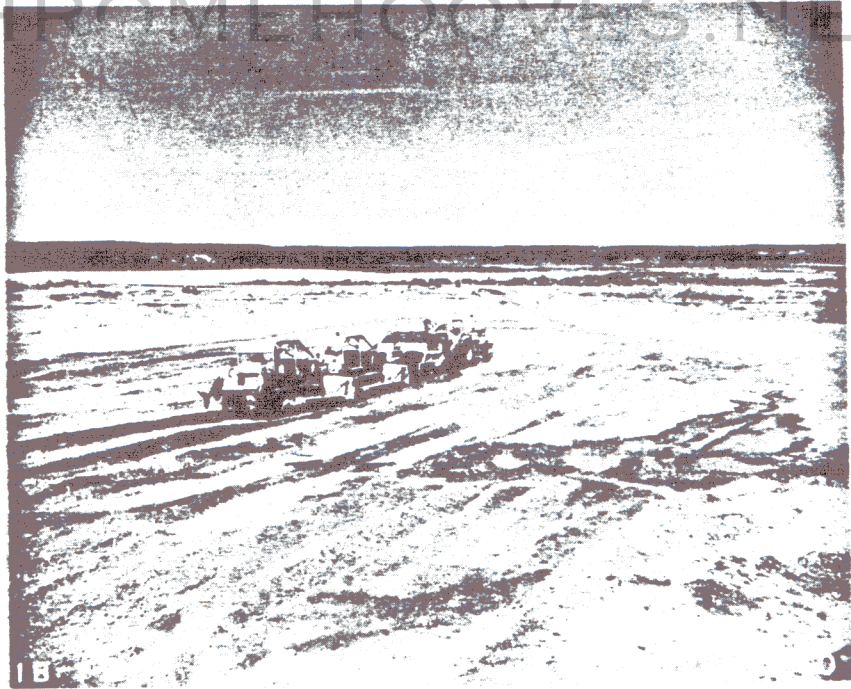


Fig II 22 March 1960 Complex 1B  
Launcher Area - Open Cut Excavation

WWW.CHROMEHOOVES.NET

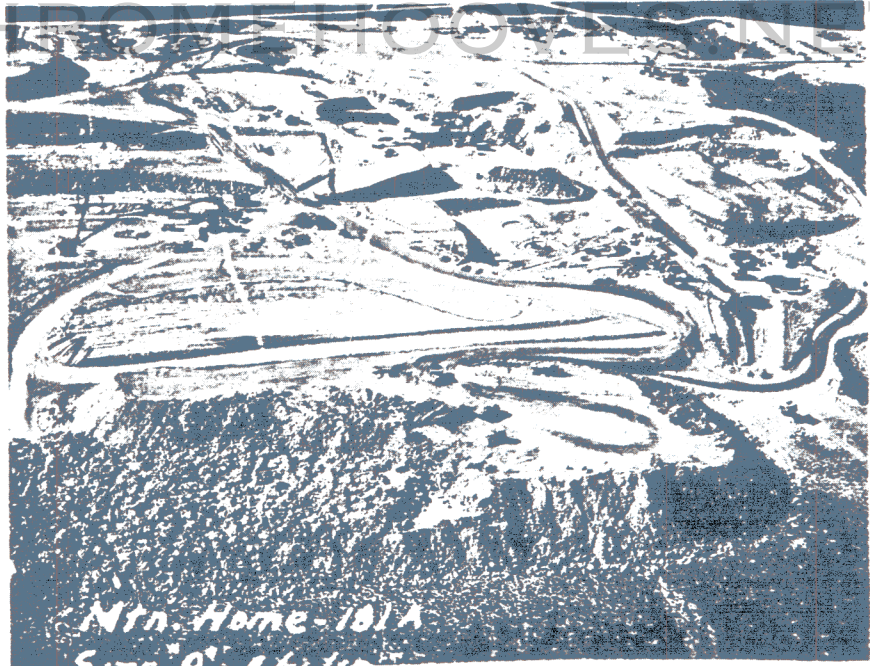


Fig I 26 April 1960 Complex 1A  
Over-All View - Looking South

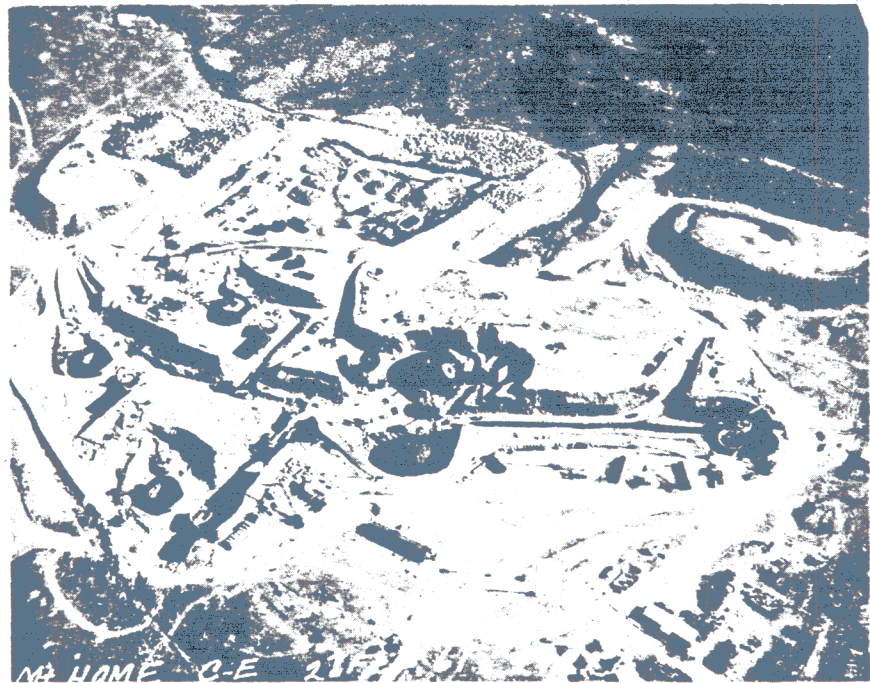


Fig II 21 February 1961 Complex 1A  
Over-All View - Looking East

WWW.CHROMEHOOVES.NET



Fig I 31 October 1961 Complex 1A  
Over-All View - Looking Southwest

WWW.CHROMEHOOVES.NET

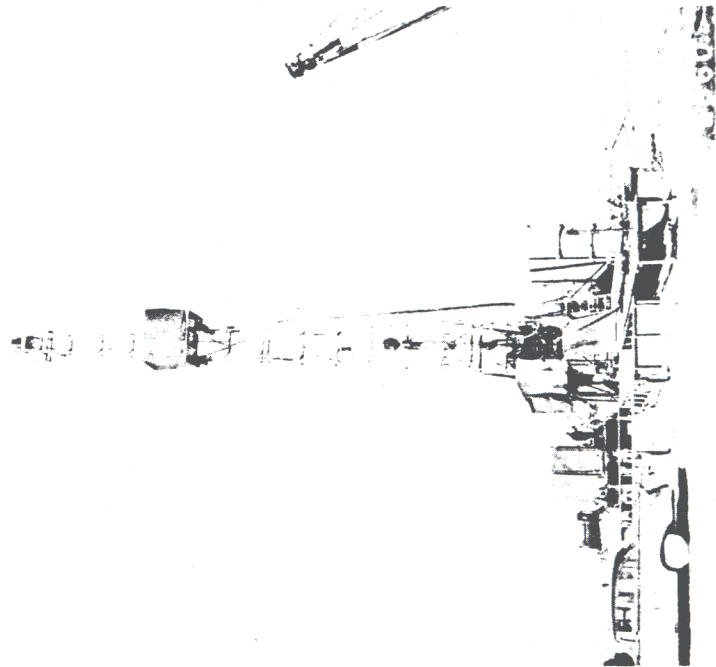


Fig II 19 February 1960 Complex 1A  
Water Well - Rotary Drill Rig

WWW.CHROMEHOOVES.NET

WWW.CHROMEHOOVES.NET



Fig I 3 August 1960 Complex 1A  
Air-Trac Drilling and Antenna Silo Excavation

WWW.CHROMEHOOVES.NET



Fig II 3 May 1960 Complex 1A  
Control Center Area - Drilling for Mass Excavation

WWW.CHROMEHOOVES.NET

WWW.CHROMEHOOVES.NET

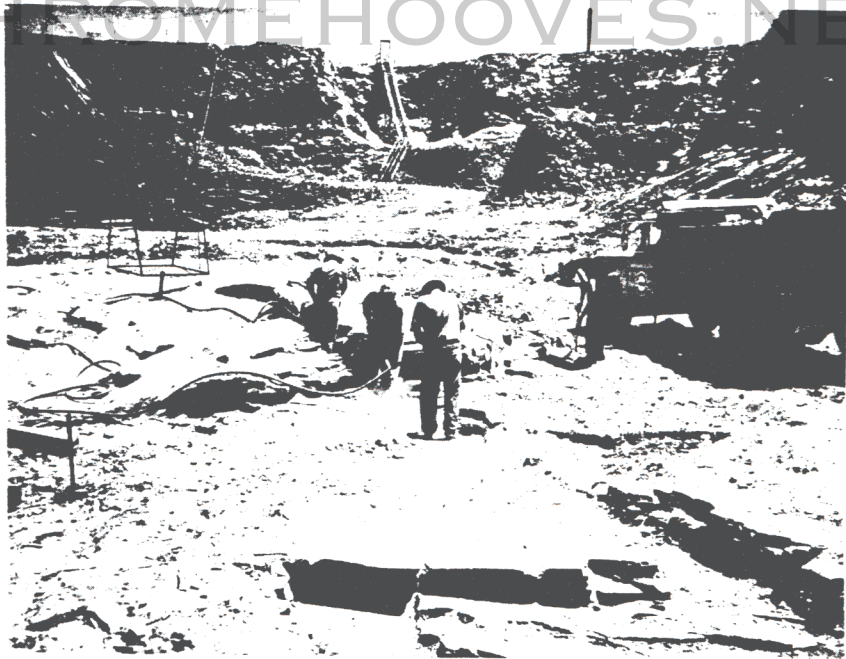


Fig I 20 June 1960 Complex 1A  
Control Center - Foundation Preparation

WWW.CHROMEHOOVES.NET

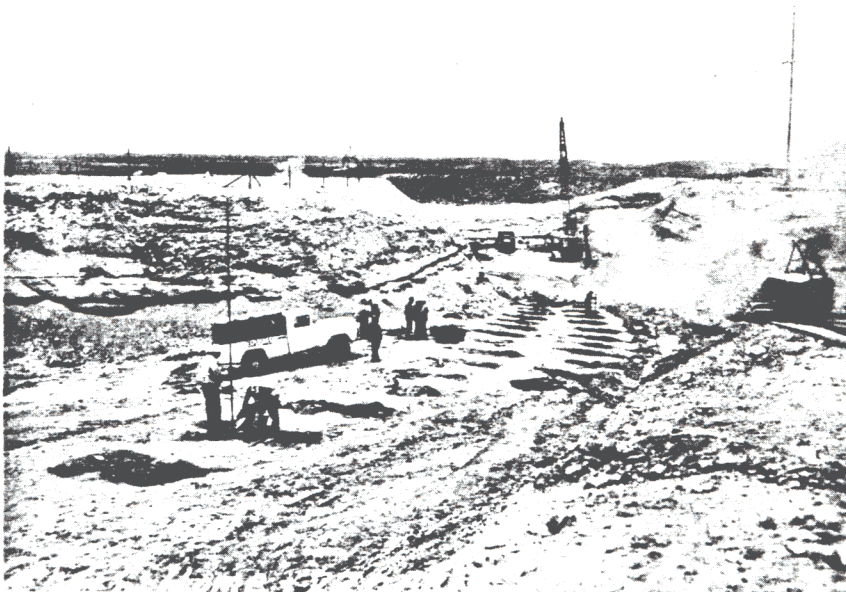


Fig II 3 May 1960 Complex 1A  
Tunnel to Launcher No. 2 - Preparing to Blast

WWW.CHROMEHOOVES.NET

WWW.CHROMEHOOVES.NET



Fig I 1 June 1960 Complex 1A  
Antenna Silos - Mass Excavation

WWW.CHROMEHOOVES.NET



Fig II 24 May 1960 Complex 1A  
Powerhouse Area - Mass Excavation

WWW.CHROMEHOOVES.NET

WWW.CHROMEHOOVES.NET

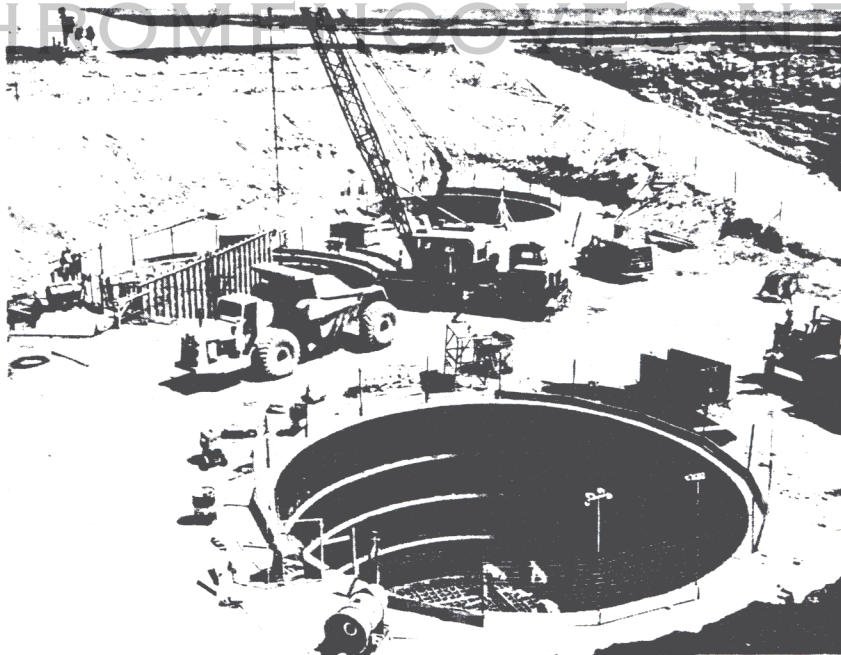


Fig I 2 June 1960 Complex 1C  
Missile Silo - Shaft Excavation

WWW.CHROMEHOOVES.NET

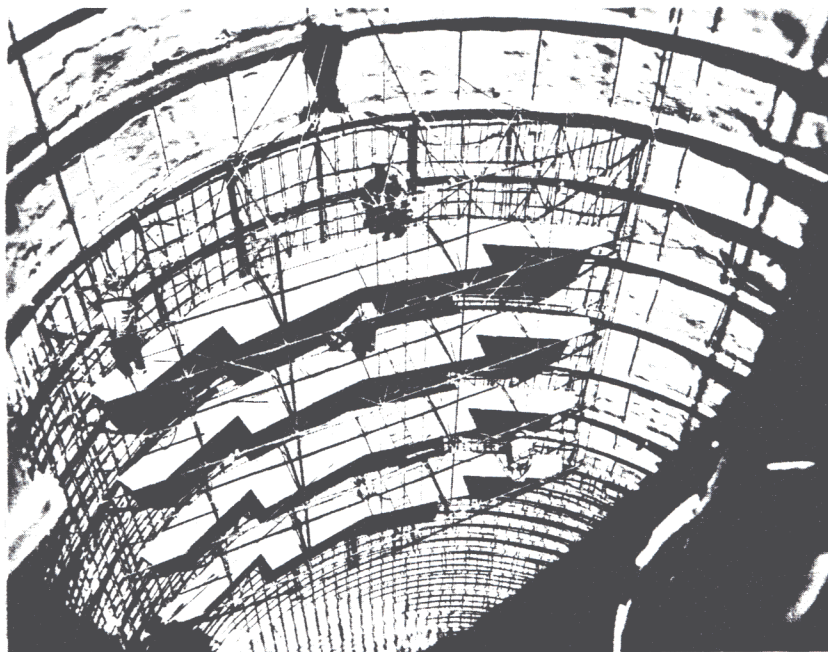


Fig II 15 July 1960 Complex 1B  
Missile Silo - Reinforcing Steel Placement

WWW.CHROMEHOOVES.NET

WWW.CHROMEHOOVES.NET

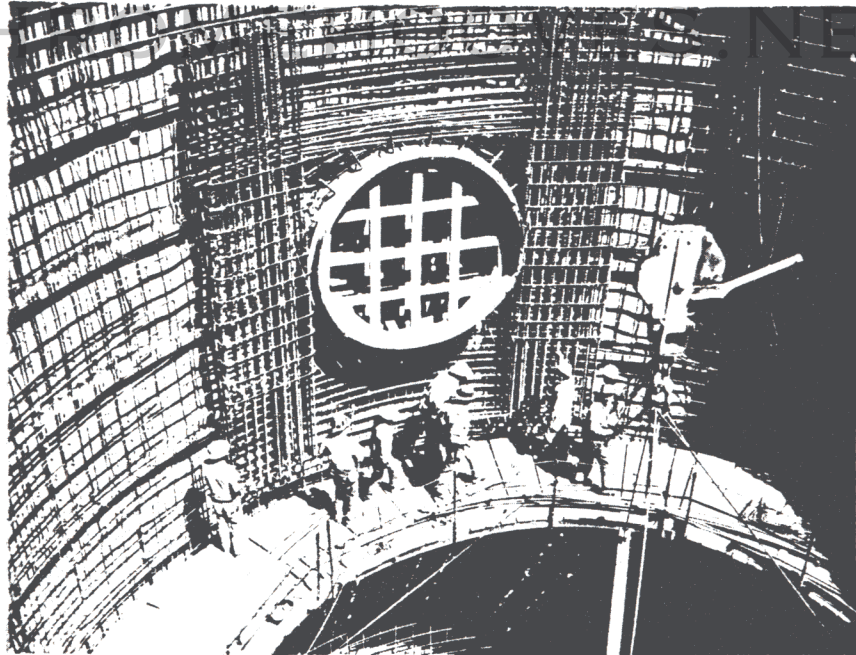


Fig I 19 August 1960 Complex 1C  
Missile Silo - Reinforcing Steel Placement

WWW.CHROMEHOOVES.NET

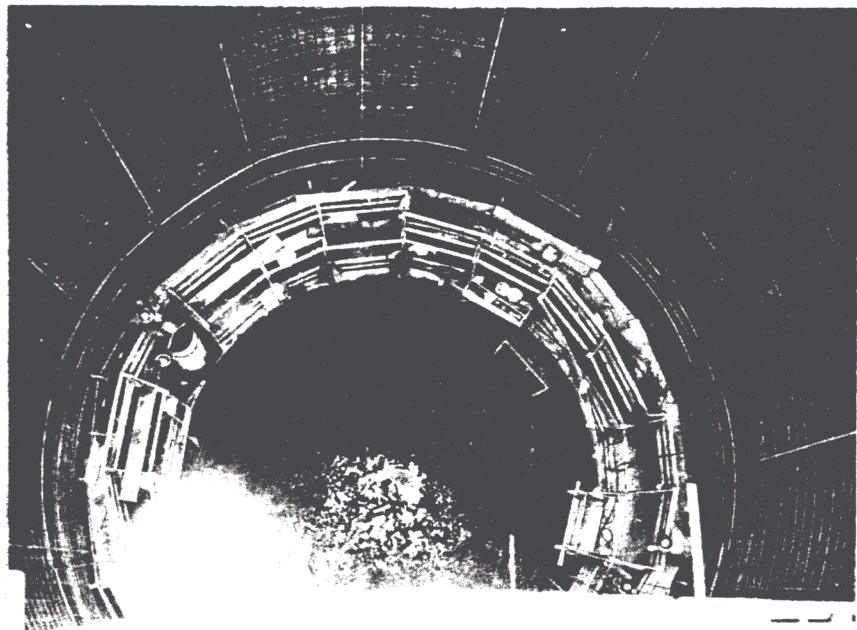


Fig II 26 August 1960 Complex 1C  
Missile Silo - Slip Forming

WWW.CHROMEHOOVES.NET



WWW.CHROMEHOOVES.NET

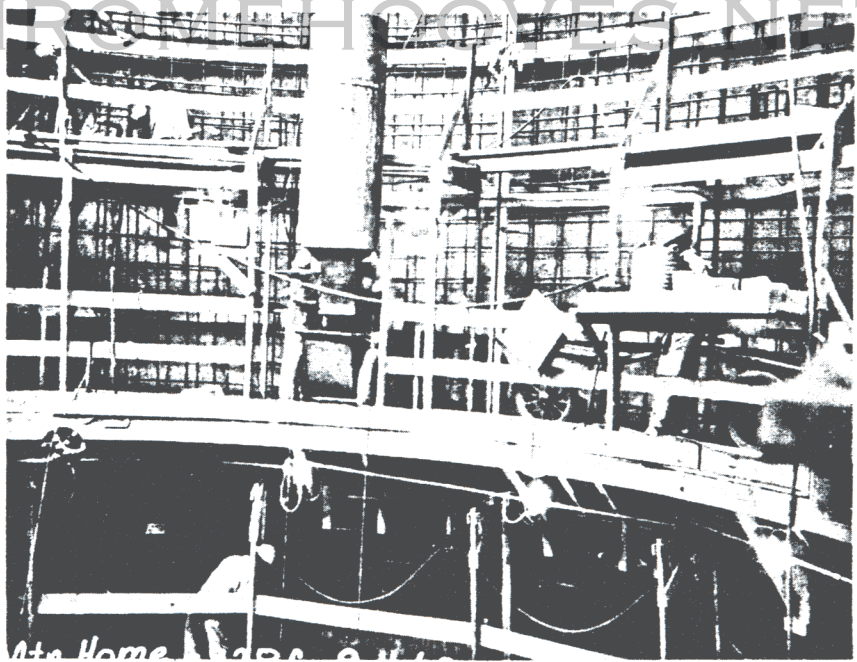


Fig I 11 August 1960 Complex 1C  
Missile Silo - Slip Forming

WWW.CHROMEHOOVES.NET

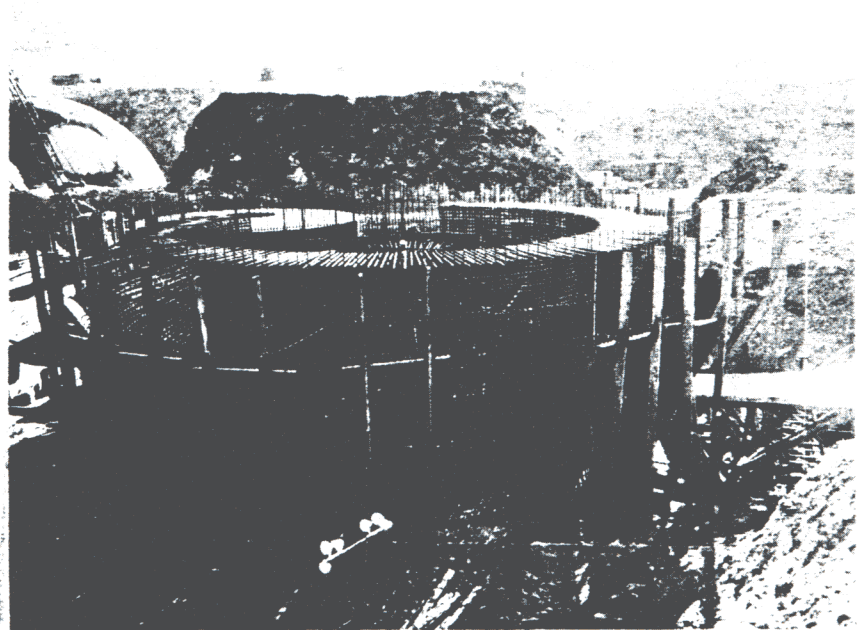


Fig II 9 November 1960 Complex 1A  
Missile Silo - Stadium Forms and Reinforcing Steel

WWW.CHROMEHOOVES.NET



Fig I 9 November 1960 Complex 1A  
Missile Silo - Reinforcing Steel

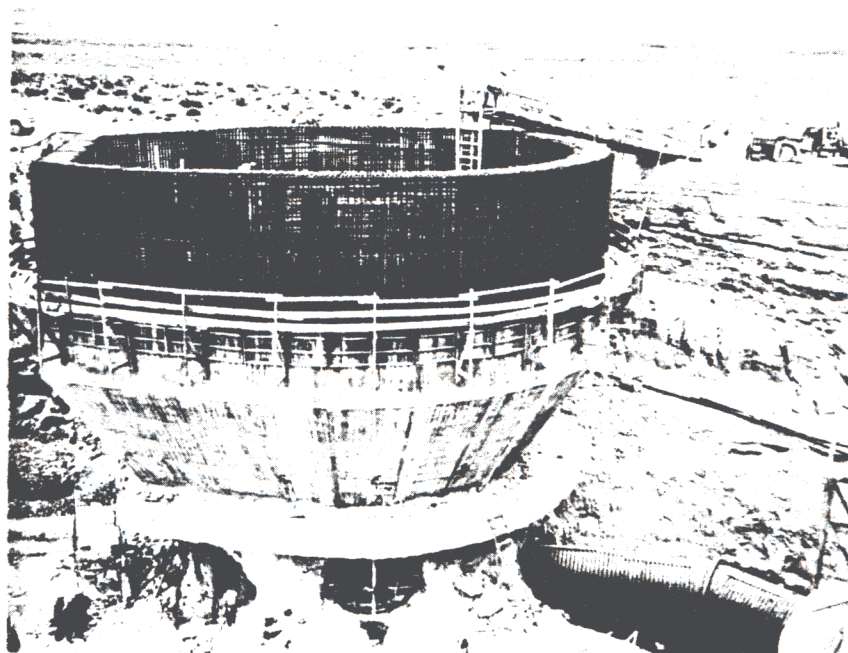


Fig II 23 February 1961 Complex 1A  
Missile Silo - Reinforcing Steel

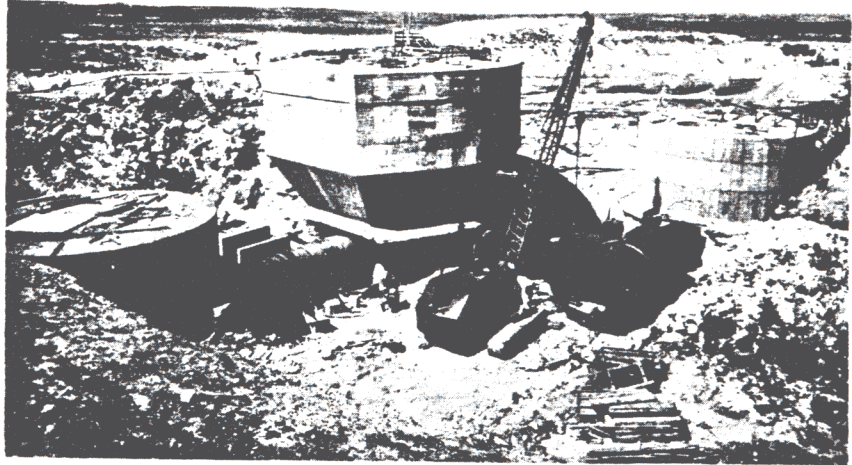


Fig I 7 April 1961 Complex 1A  
Launcher No. 1 - Tunnel Junction Placement

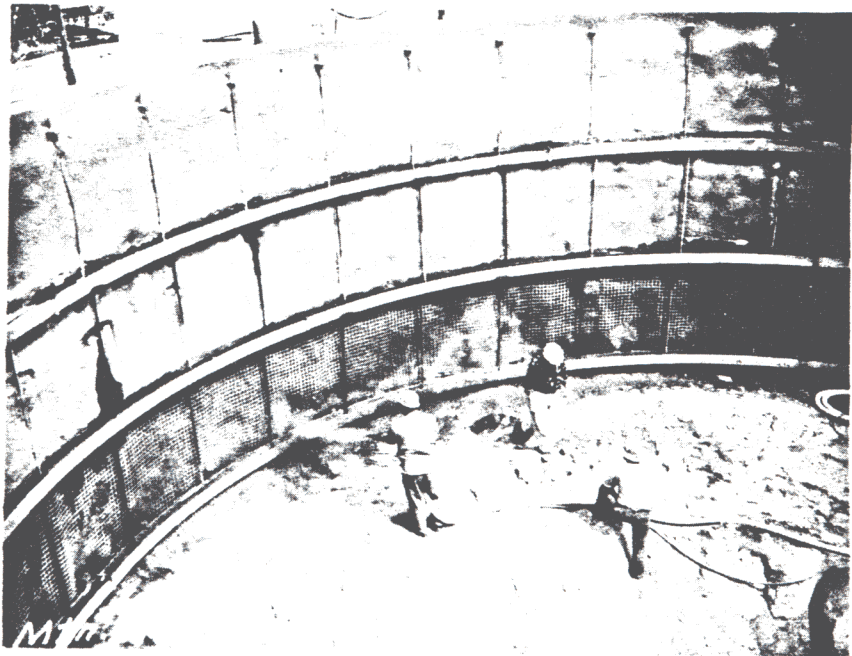


Fig II 20 April 1960 Complex 1B  
Equipment Terminal - Placing Gunite

WWW.CHROMEHOOVES.NET



Fig I 2 September 1960 Complex 1C  
Propellant Terminal - Coil Spring Mounts

WWW.CHROMEHOOVES.NET

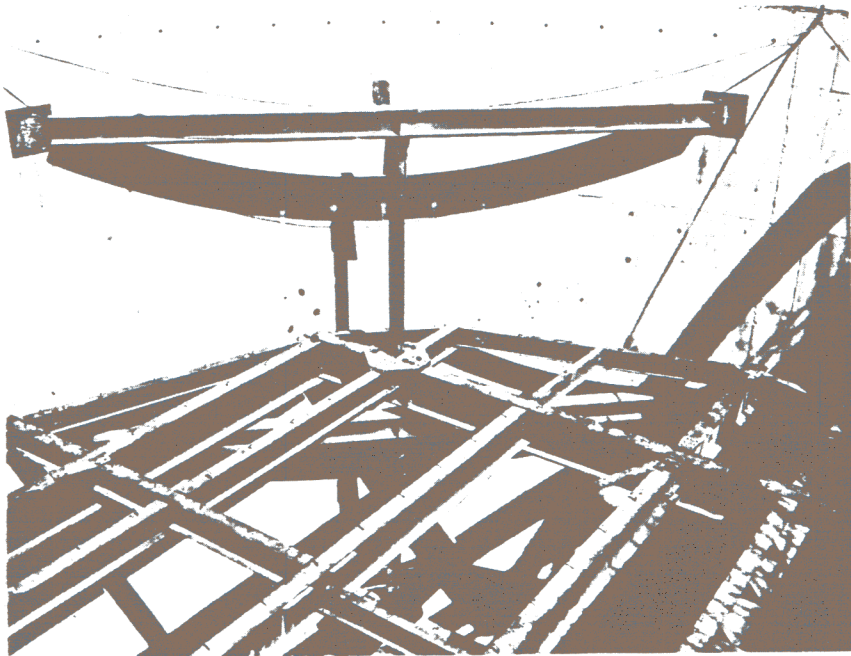


Fig II 27 September 1960 Complex 1B  
Equipment Terminal - Spring Beams for Floors

WWW.CHROMEHOOVES.NET

WWW.CHROMEHOOVES.NET



Fig I 19 July 1960 Complex 1A  
Control Center - Floor Form Preparation

WWW.CHROMEHOOVES.NET

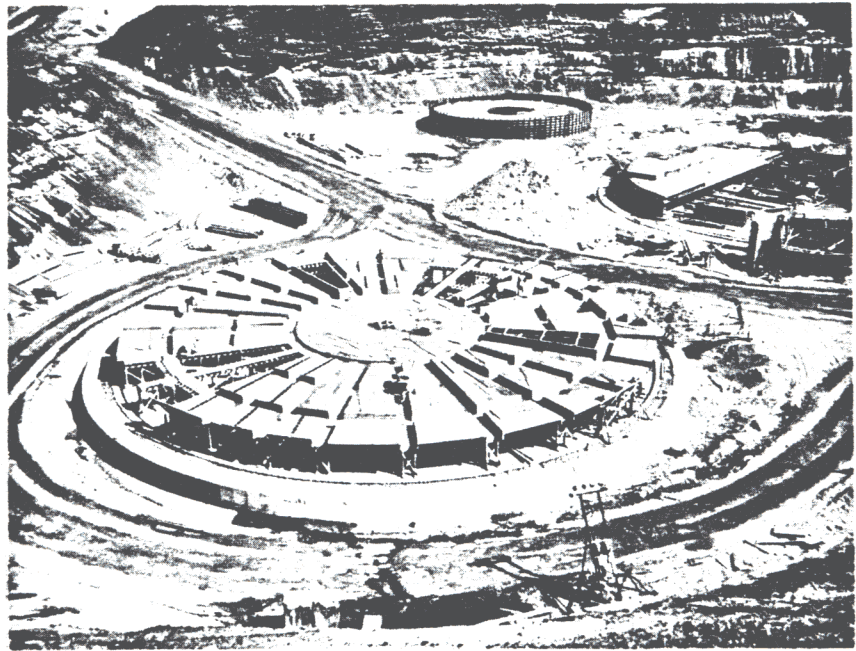


Fig II 1 September 1960 Complex 1B  
Control Center - Floor Form Preparation

WWW.CHROMEHOOVES.NET

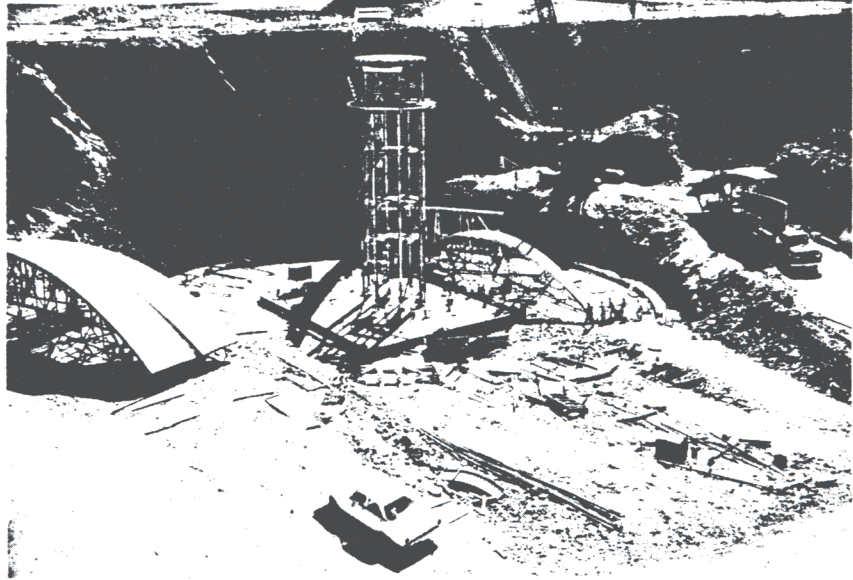


Fig I 17 August 1960 Complex 1A  
Powerhouse - Ready for Blaw-Knox Dome Forms

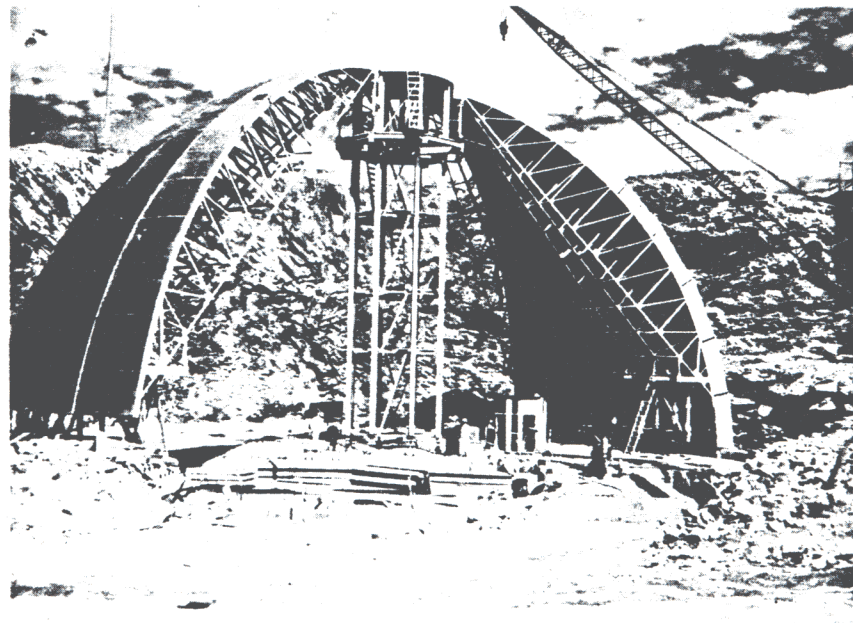


Fig II 23 August 1960 Complex 1A  
Powerhouse - Blaw-Knox Forms in Place

WWW.CHROMEHOOVES.NET

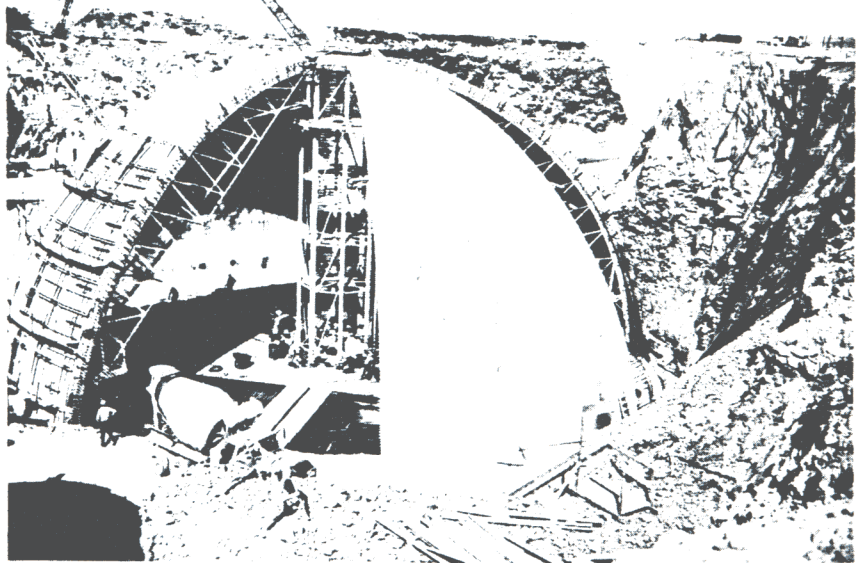


Fig I 26 September 1960 Complex 1A  
Powerhouse Dome - Concrete Placement

WWW.CHROMEHOOVES.NET



Fig II 28 April 1961 Complex 1C  
Powerhouse Area - Backfill

WWW.CHROMEHOOVES.NET



Fig I 12 July 1961 Complex 1A  
Blast Lock No. 2 Area - Backfill

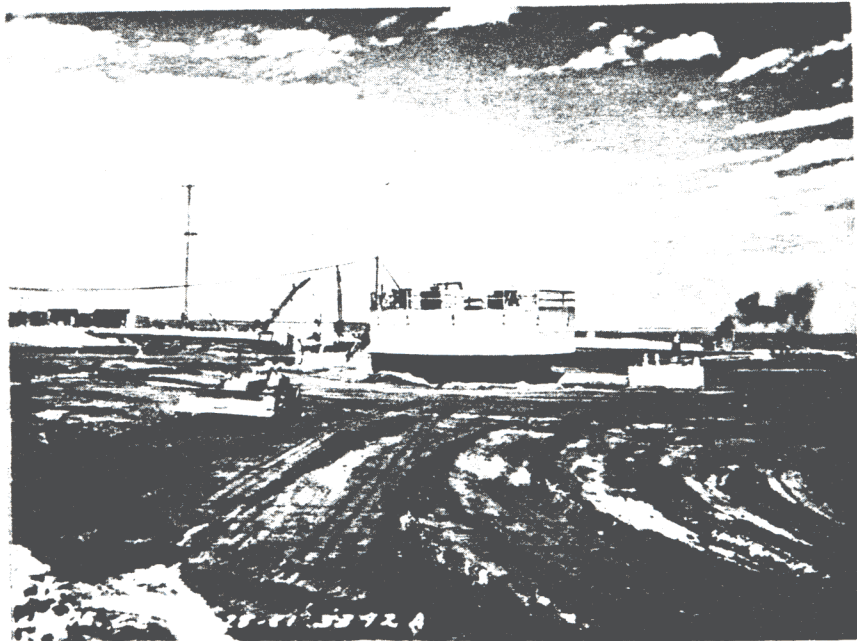


Fig II 28 August 1961 Complex 1A  
Portal Silo Area - Backfill



WWW.CHROMEHOOVES.NET



Fig I

16 September 1961  
Missile Silo - Opening Door

Complex 1C

WWW.CHROMEHOOVES.NET



Fig II

27 September 1961  
Missile Silo - Doors Open

Complex 1C

WWW.CHROMEHOOVES.NET

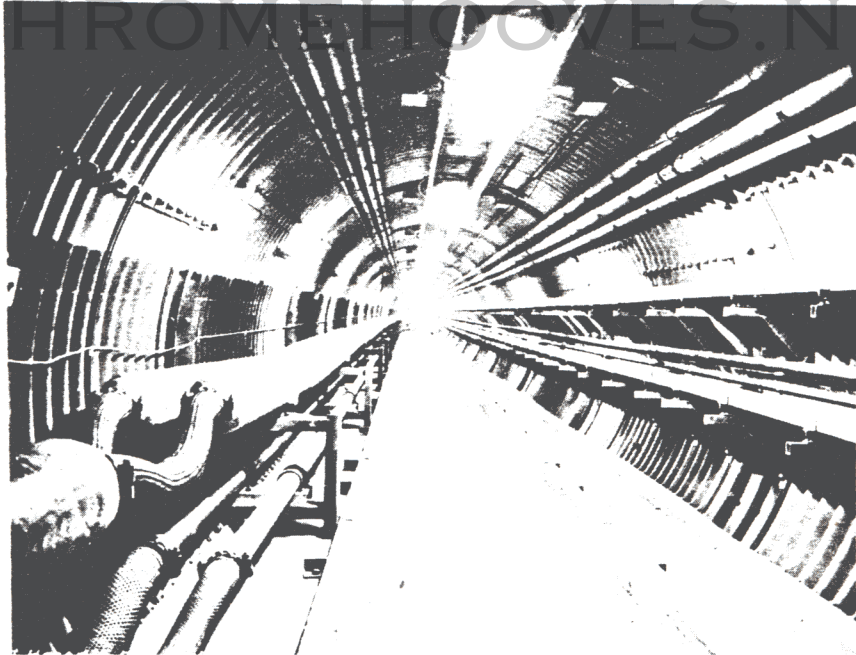


Fig I 17 January 1962 Complex 1C  
"A" Tunnel - West from Blast Lock No. 2



Fig II 9 February 1962 Complex 1A  
Equipment Terminal No. 2 - Pipe Supports in "A" Tunnel

WWW.CHROMEHOOVES.NET

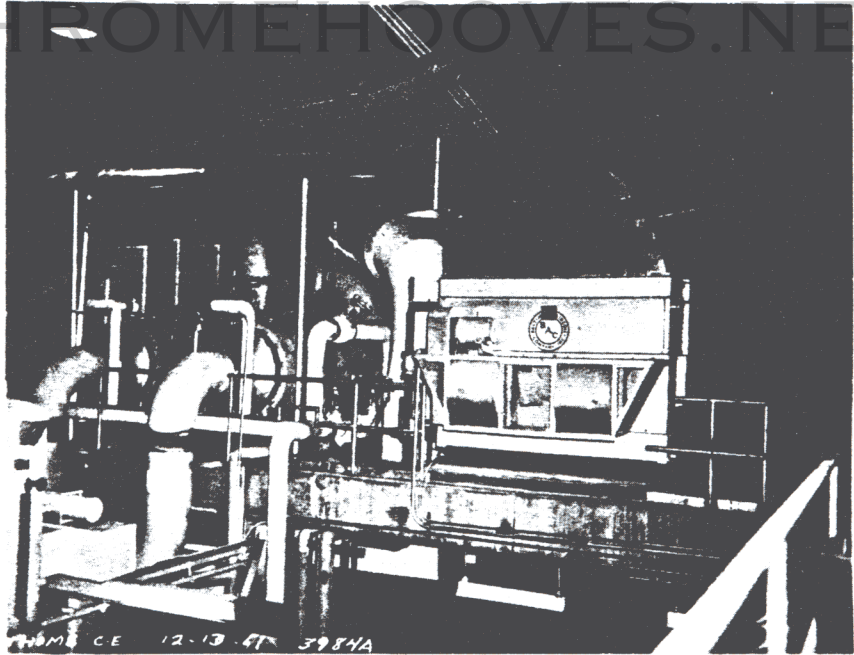


Fig I 13 December 1961 Complex 1A  
Powerhouse - Cooling Tower

WWW.CHROMEHOOVES.NET

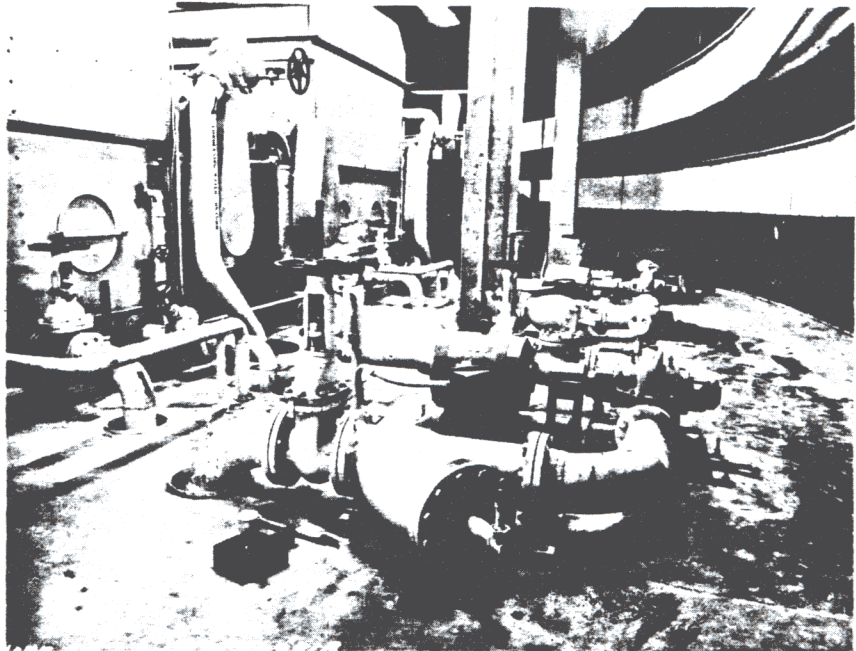


Fig II 13 February 1962 Complex 1B  
Powerhouse - Condensor Water Pumps

WWW.CHROMEHOOVES.NET

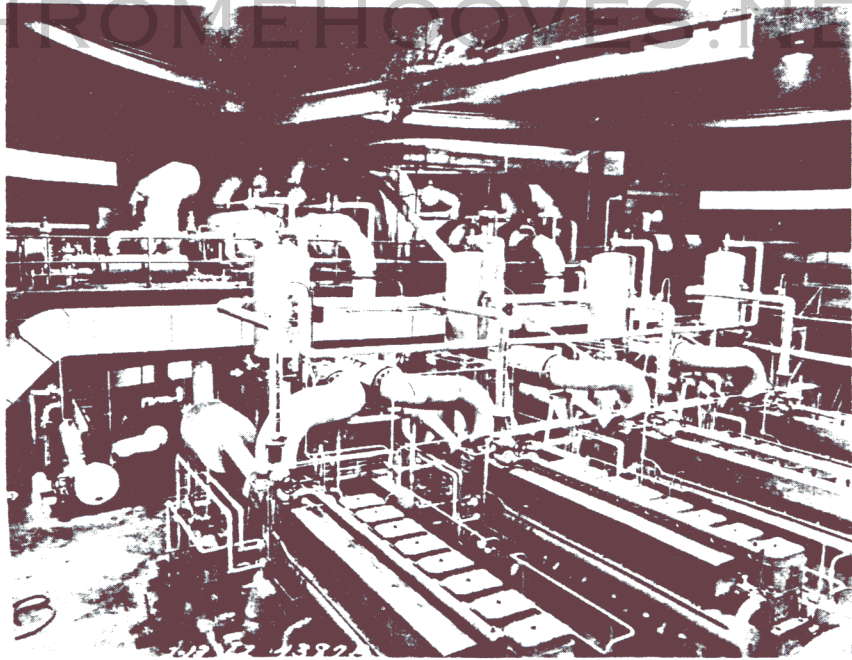


Fig I 13 February 1962 Complex 1B  
Powerhouse - Over-All Looking Southwest

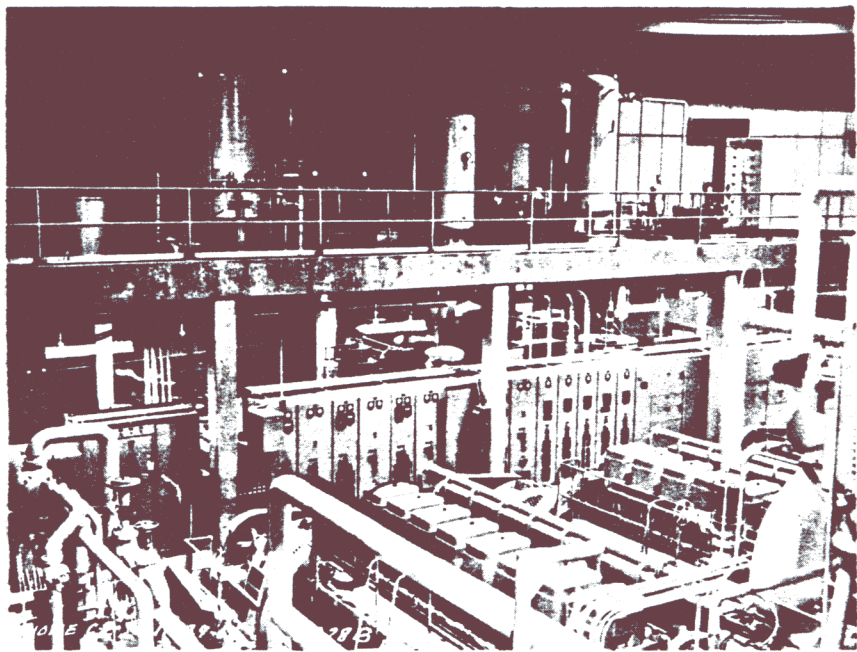


Fig II 29 November 1961 Complex 1B  
Powerhouse - Over-All Looking Northeast

WWW.CHROMEHOOVES.NET

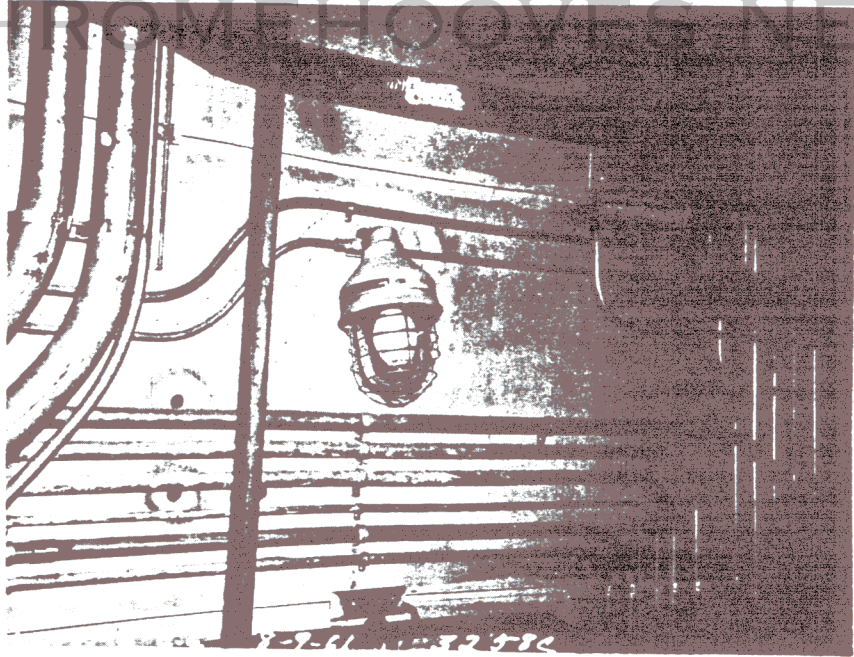


Fig I 9 August 1961 Complex 1C  
Missile Silo - Explosion-Proof Lights

WWW.CHROMEHOOVES.NET

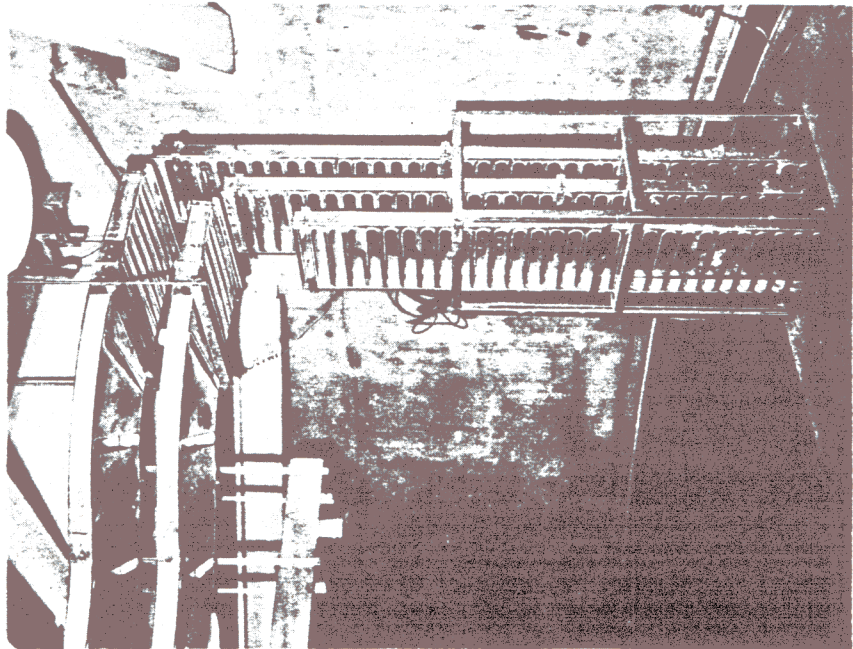


Fig II 16 October 1961 Complex 1C  
Equipment Terminal - Conduit

WWW.CHROMEHOOVES.NET

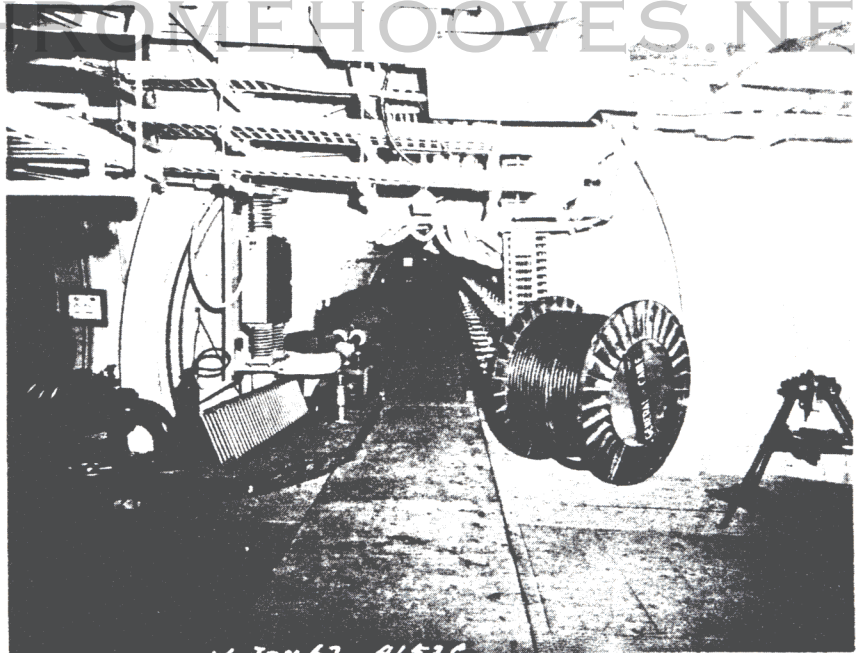


Fig I 16 January 1962 Complex 1C  
Tunnel Junction No. 10

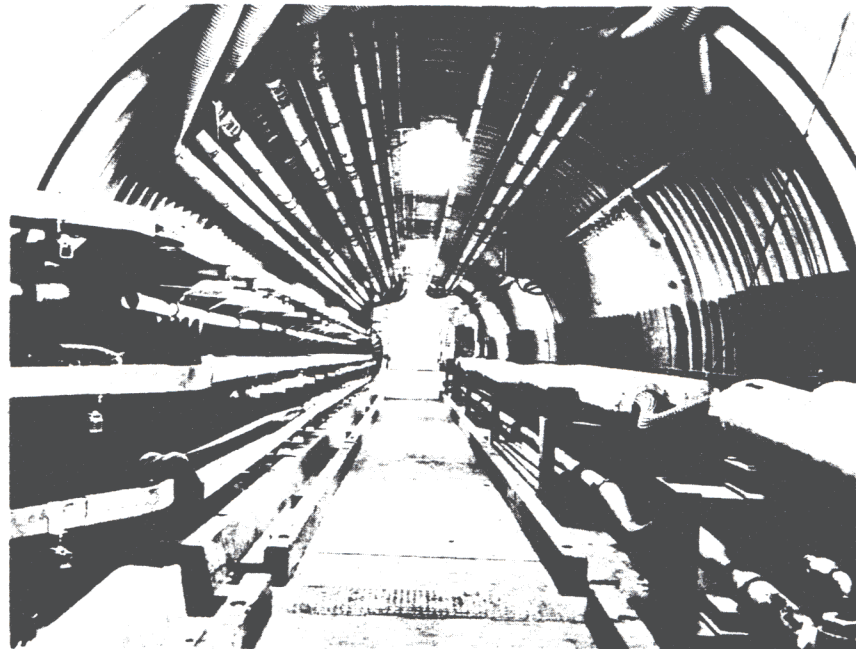


Fig II 17 January 1962 Complex 1C  
"A" Tunnel - From Tunnel Junction No. 12  
to Tunnel Junction No. 10

WWW.CHROMEHOOVES.NET

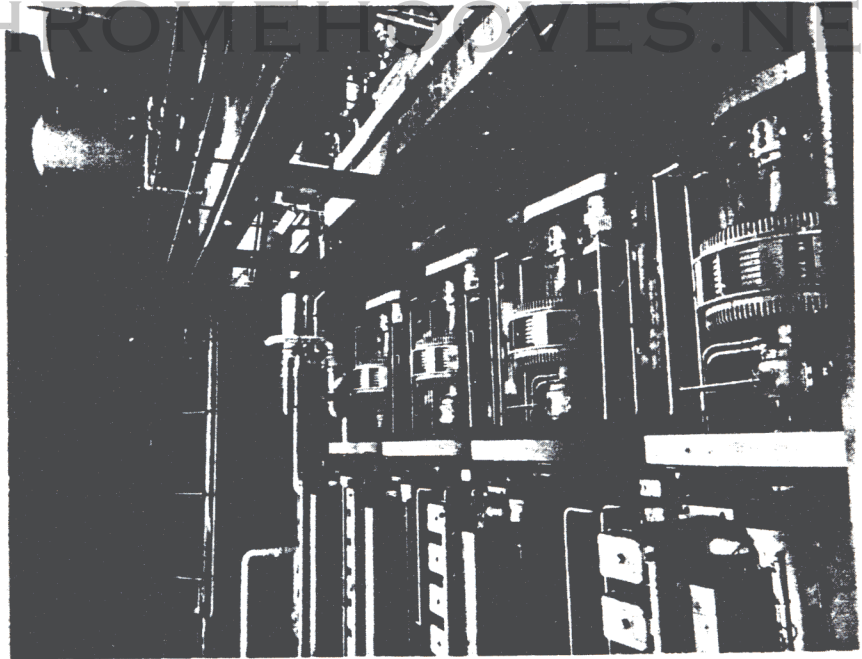


Fig I 13 February 1962 Complex 1B  
Powerhouse - Generators and Switchgear

WWW.CHROMEHOOVES.NET

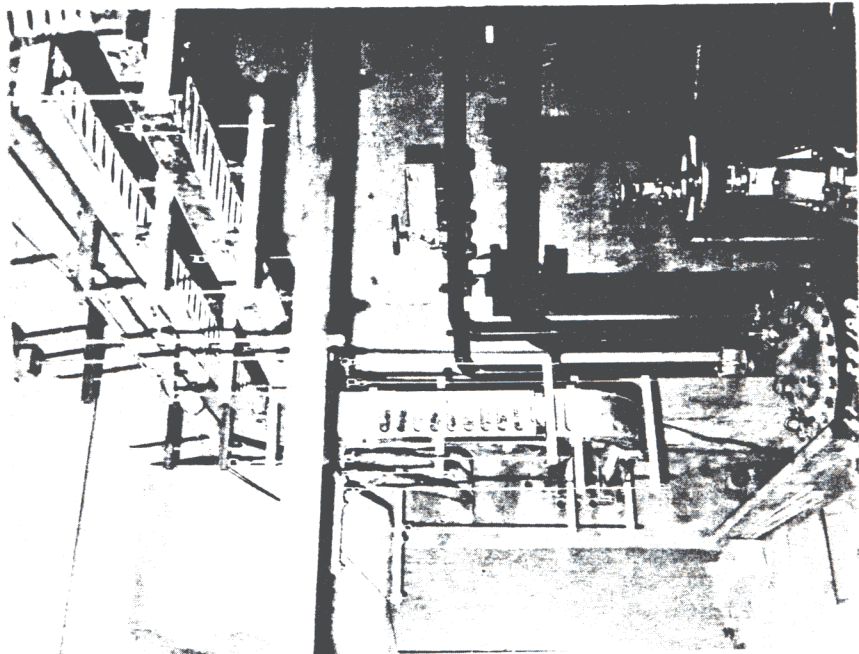


Fig II 9 November 1961 Complex 1A  
Blast Lock No. 1 - Cable Trays

WWW.CHROMEHOOVES.NET

WWW.CHROMEHOOVES.NET



Fig I 7 February 1961  
Liquid Oxygen Plant - Steel Framing Complete

WWW.CHROMEHOOVES.NET



Fig II 5 April 1961  
Liquid Oxygen Plant

WWW.CHROMEHOOVES.NET





Fig I 23 December 1960 Complex 1A  
Arrival of T-201 Vessel at Jobsite

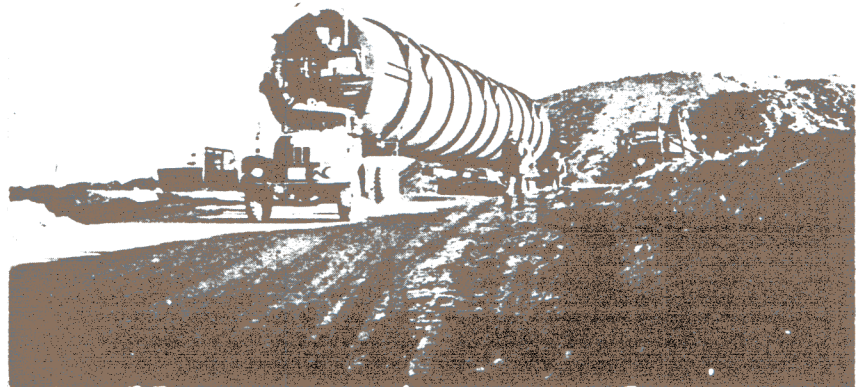


Fig II 23 December 1960 Complex 1A  
Descending Ramp into Excavated Area with Vessel

WWW.CHROMEHOOVES.NET

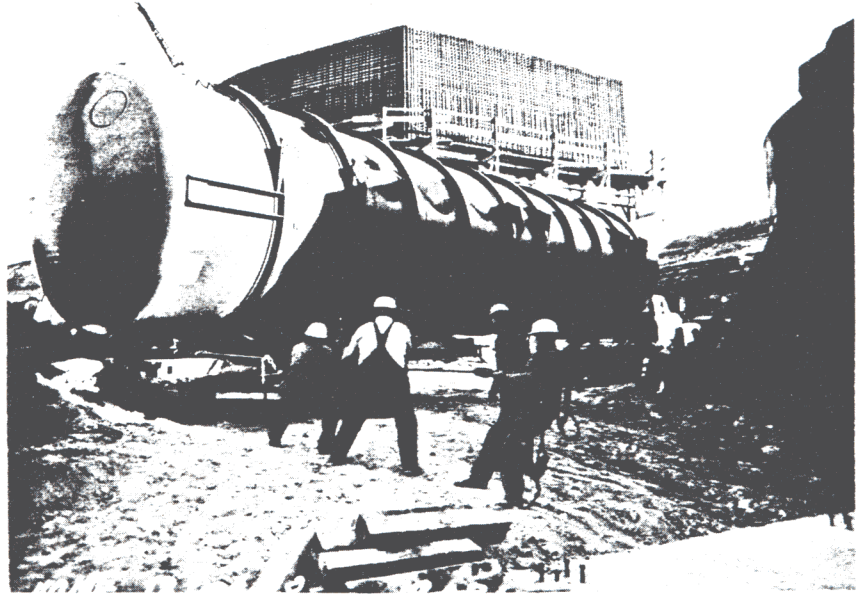


Fig I 23 December 1960 Complex 1A  
Turning the Moving Dollies

WWW.CHROMEHOOVES.NET

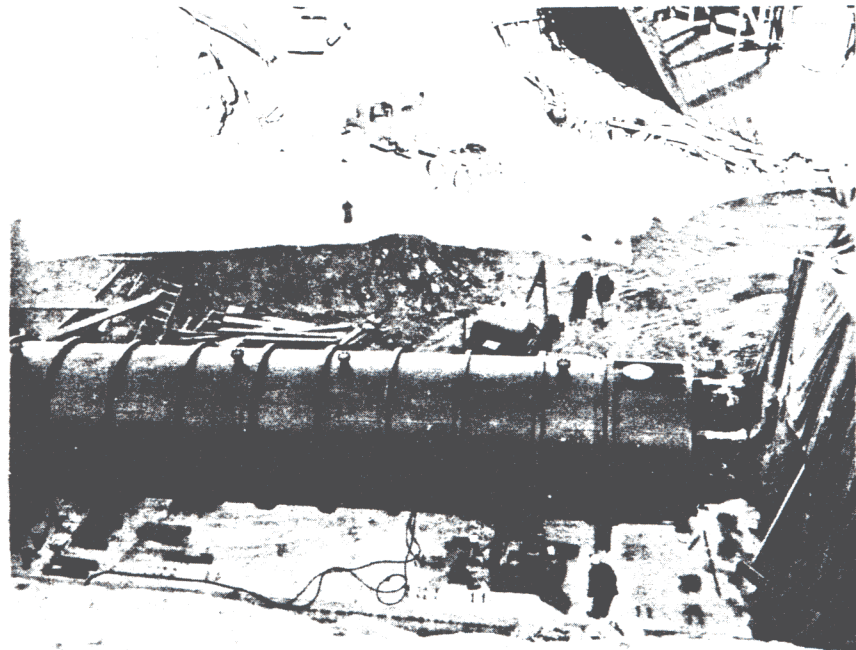


Fig II 23 December 1960 Complex 1A  
T-201 Located on LOX Bay Pad

WWW.CHROMEHOOVES.NET

WWW.CHROMEHOOVES.NET



Fig I 21 December 1960 Complex 1A  
Central Pneumatic System for Multiple Jacking

WWW.CHROMEHOOVES.NET



Fig II 21 December 1960 Complex 1A  
Jacking and Cribbing Operation

WWW.CHROMEHOOVES.NET

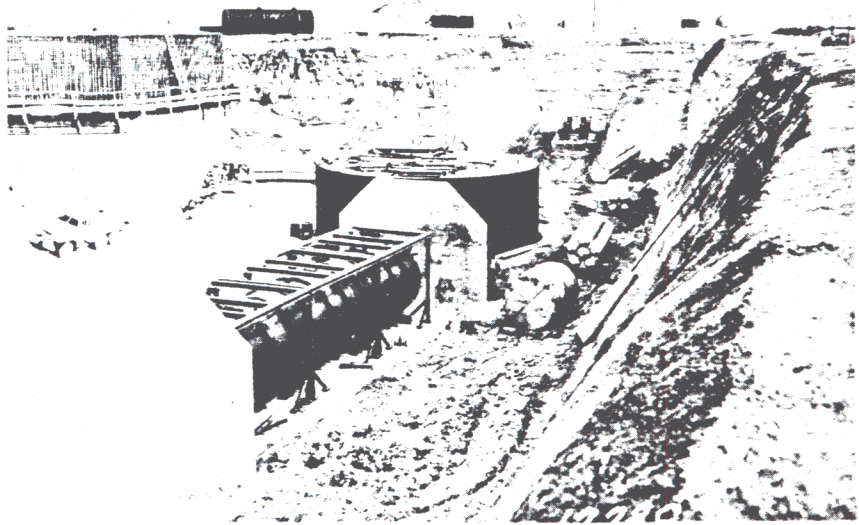


Fig I 14 December 1960 Complex 1C  
Propellant Terminal - T-201 Vessel in Place with  
Suspension Mount Being Installed

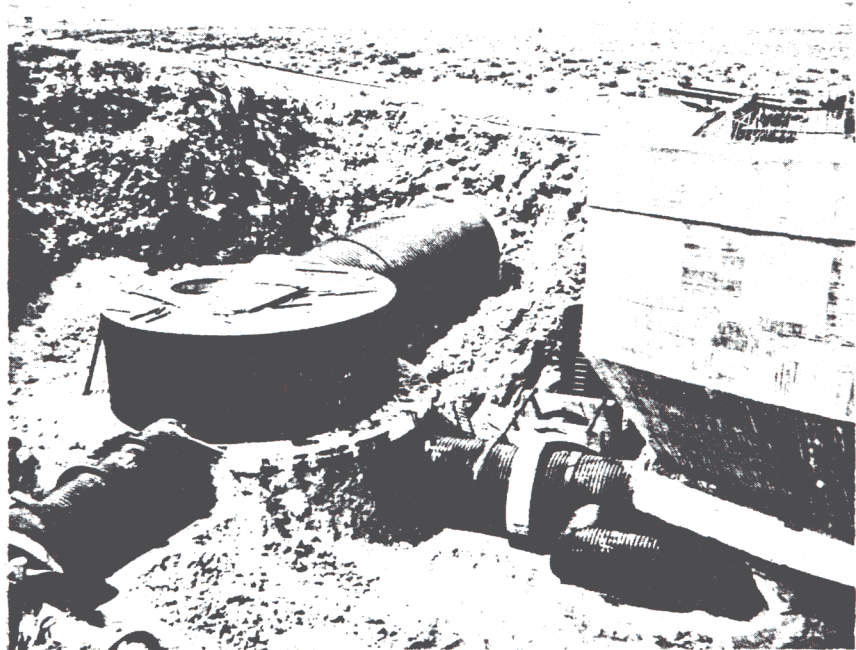


Fig II 11 May 1961 Complex 1A  
Propellant Terminal - Tunnel Configuration Completed

WWW.CHROMEHOOVES.NET

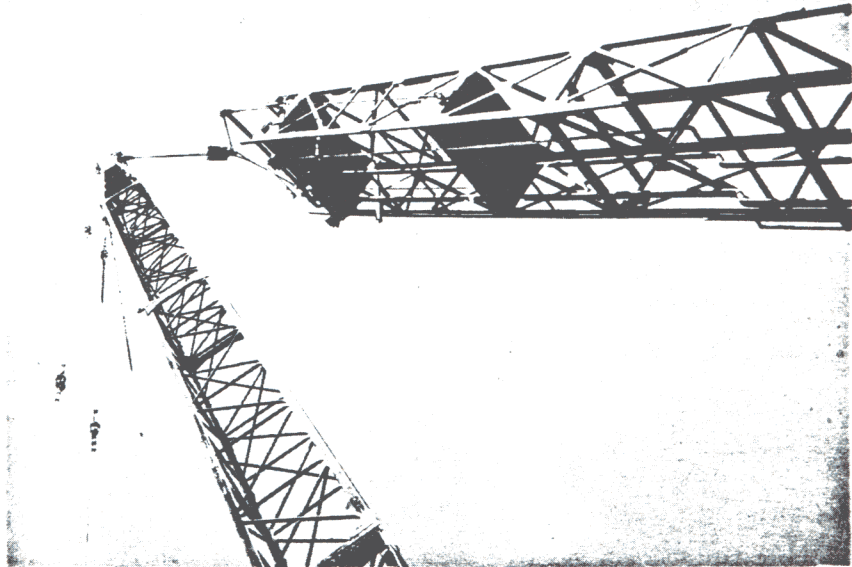


Fig I 18 May 1961 Complex 1B  
Missile Silo - Lowering Fuel Crib

WWW.CHROMEHOOVES.NET

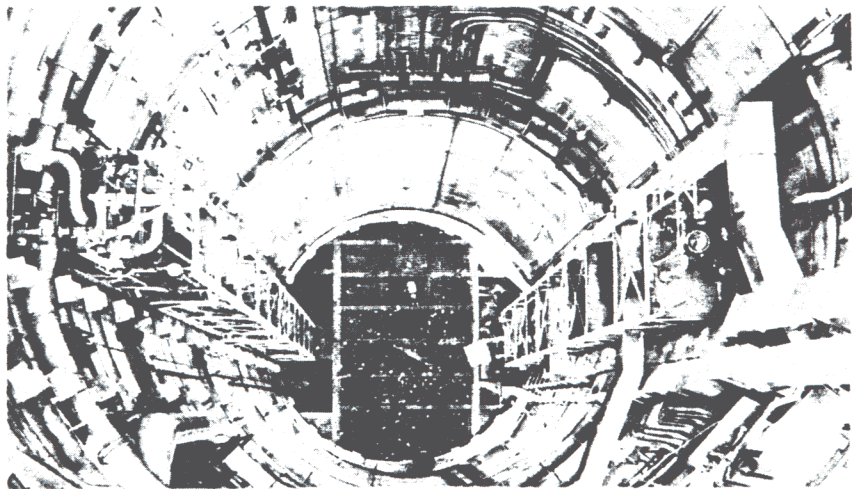


Fig II 16 October 1961 Complex 1C  
Missile Silo - View Through Overhead Door  
IOX Crib at Left - Fuel Crib at Right

WWW.CHROMEHOOVES.NET



Fig I 24 October 1961 Complex 1B  
Missile Silo Bottom - Directly Beneath Fuel Crib  
Showing P-111 and P-112 RP-1 Fuel Pumps

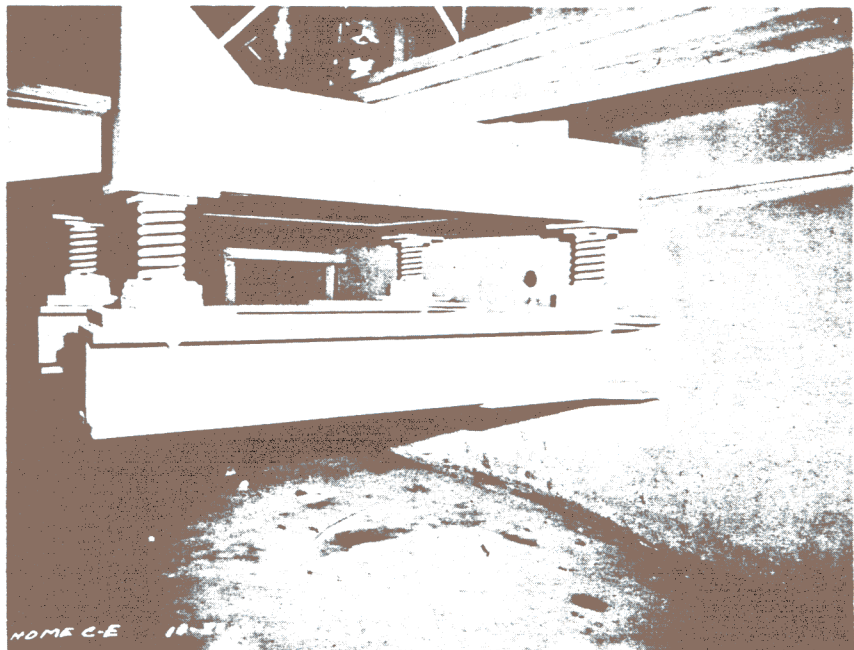


Fig II 24 October 1961 Complex 1B  
Missile Silo - Spring Mount at Base of LOX Crib

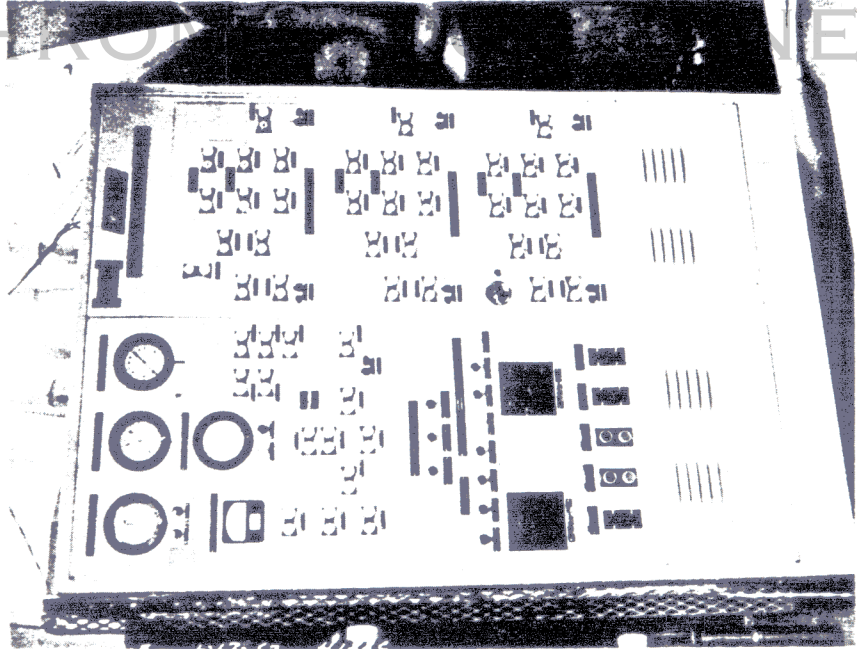


Fig I 17 January 1962 Complex 1C  
Tunnel Junction No. 12 - RP-1 Fuel Transfer Panel

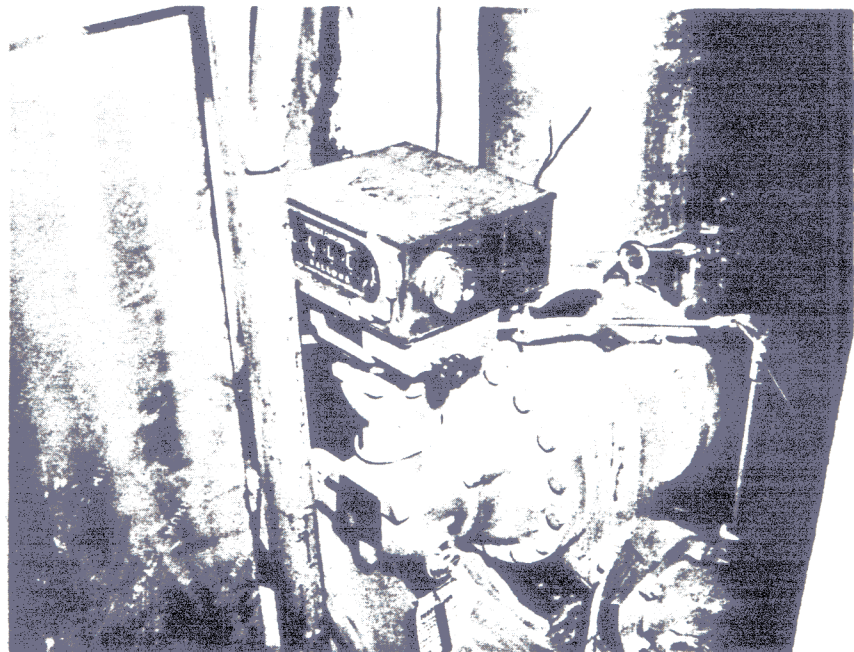


Fig II 20 November 1961 Complex 1C  
Missile Silo - Totalizing Flow Meter, Stage I,  
RP-1 Fuel Crib

WWW.CHROMEHOOVES.NET



Fig I 22 December 1960 Complex 1C  
Propellant Terminal - Lowering Gaseous Storage Cluster

WWW.CHROMEHOOVES.NET

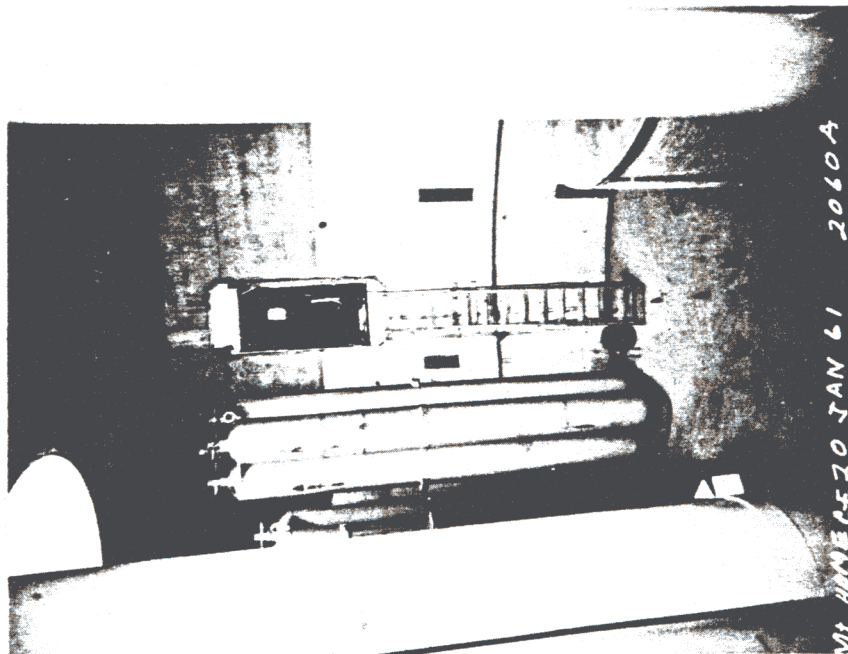


Fig II 20 January 1961 Complex 1A  
Propellant Terminal - Gaseous Storage Vessel Clusters

WWW.CHROMEHOOVES.NET





Fig I 19 January 1961 Complex 1B  
Propellant Terminal - Helium Cooler, T-402,  
Surrounded by Gaseous Storage Vessels

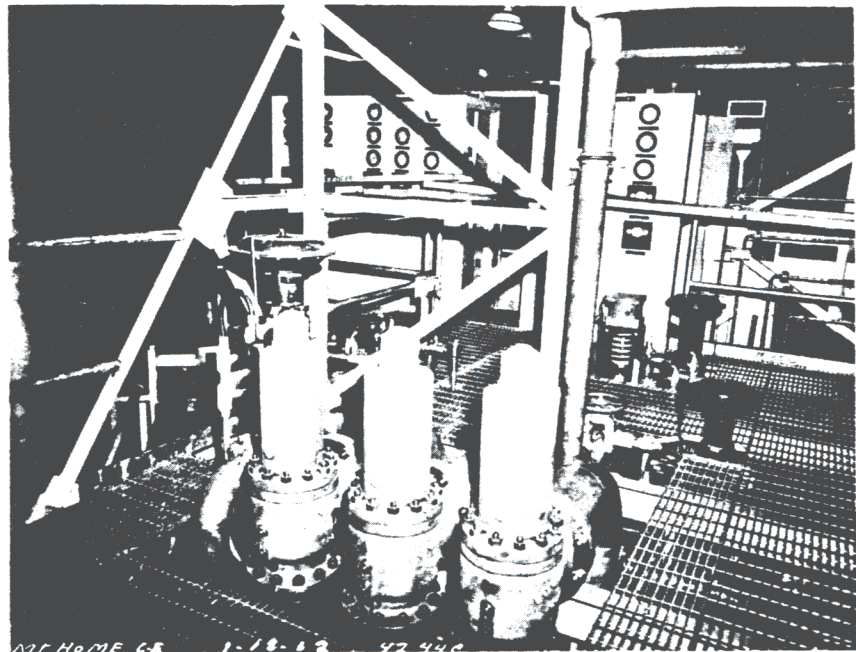


Fig II 18 January 1962 Complex 1C  
Propellant Terminal - Lonergan Type Relief Valves  
for LOX Vessel

WWW.CHROMEHOOVES.NET



Fig I 29 November 1961 Complex 1B  
Propellant Terminal - LOX, Helium and Nitrogen  
Transfer Panels

WWW.CHROMEHOOVES.NET

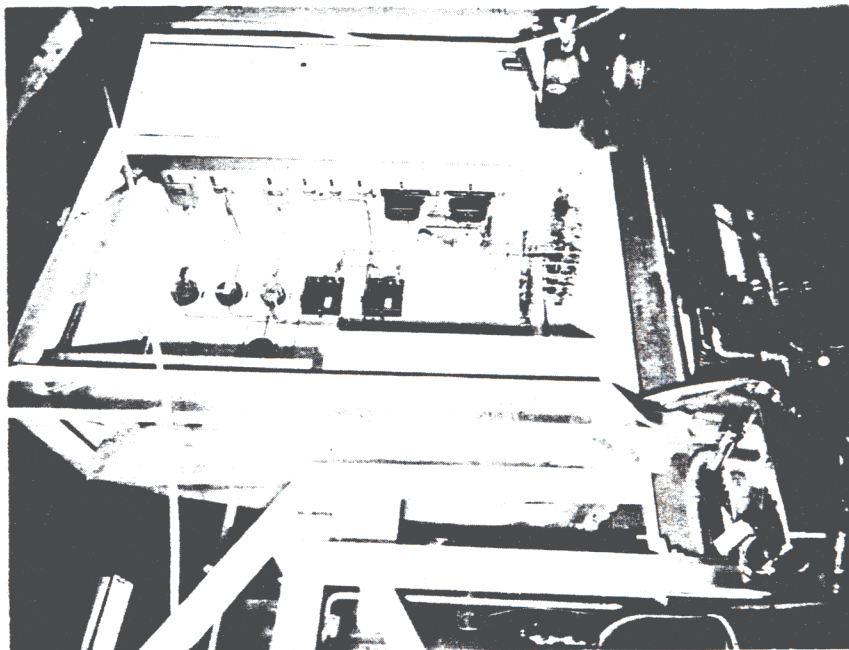


Fig II 8 November 1961 Complex 1C  
Propellant Terminal - LOX Transfer Panel  
Rear Interior View

WWW.CHROMEHOOVES.NET

WWW.CHROMEHOOVES.NET

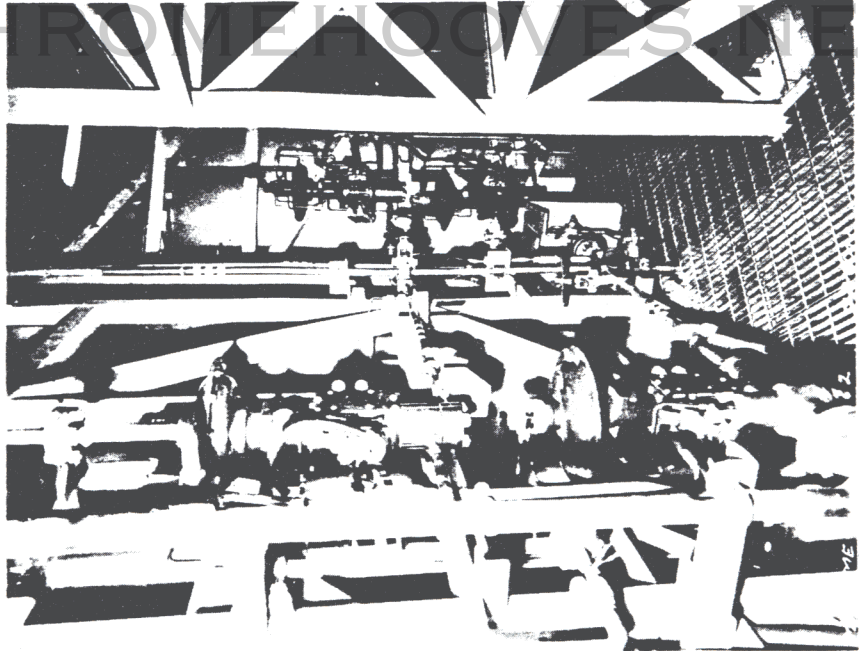


Fig I 18 January 1962 Complex 1C  
Propellant Terminal - Automatic Flow Control Valves

WWW.CHROMEHOOVES.NET

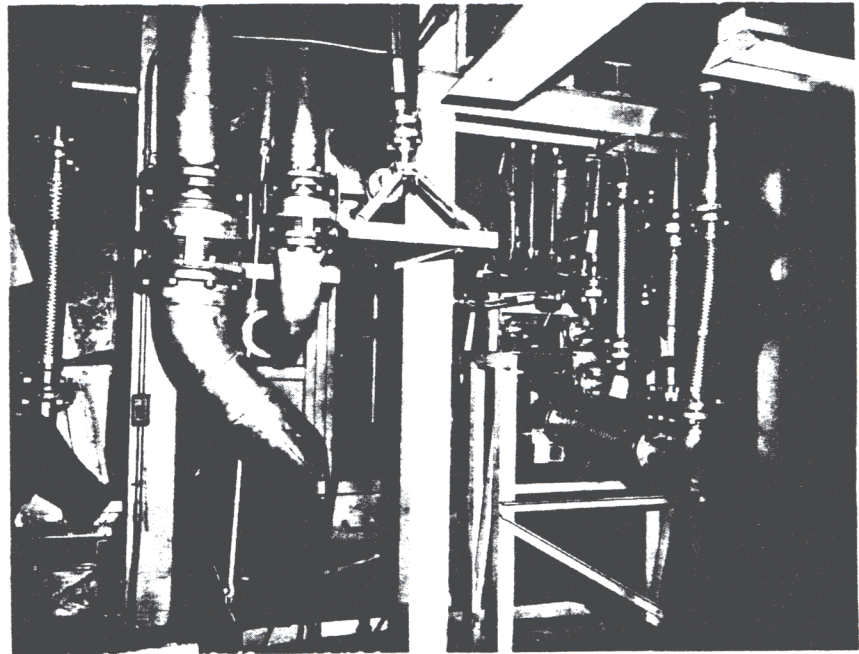


Fig II 18 January 1962 Complex 1C  
Propellant Terminal - Process Piping Entering  
"D" Tunnel

WWW.CHROMEHOOVES.NET

WWW.CHROMEHOOVES.NET



Fig I 14 June 1961 Grafe-Weeks Plant  
LOX and Fuel Cribs on Slab Ready for Balloon  
Building to be Erected Over the Slab

WWW.CHROMEHOOVES.NET

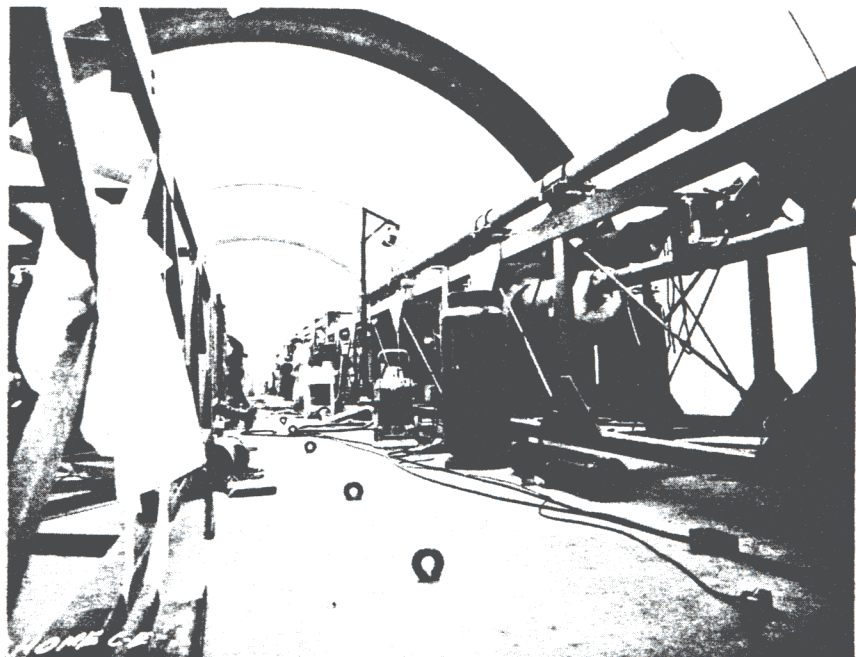


Fig II 14 June 1961 Grafe-Weeks Plant  
Interior View of Balloon Building Over Cribs

WWW.CHROMEHOOVES.NET

WWW.CHROMEHOOVES.NET

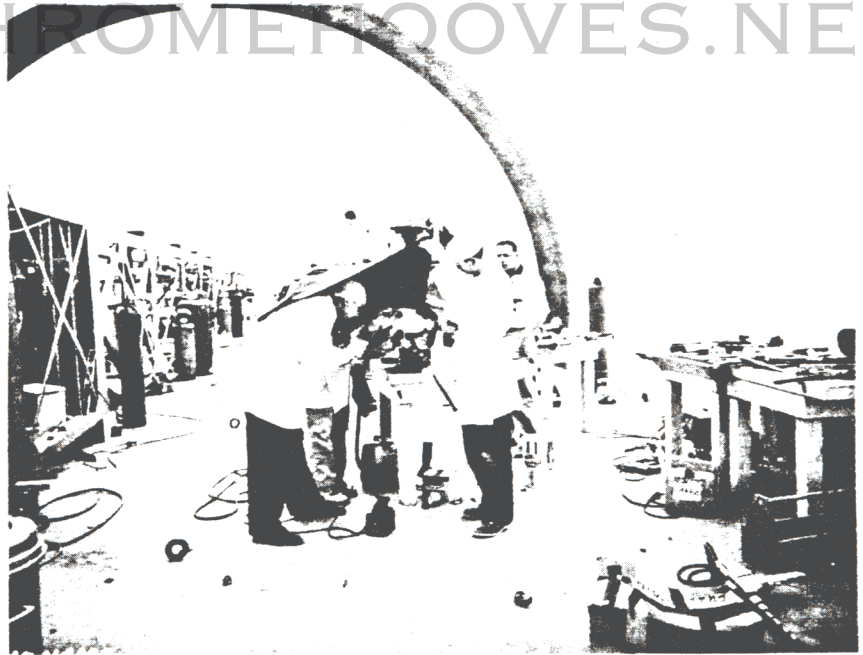


Fig I 14 June 1961 Grafe-Weeks Plant  
Ultra-Violet Light Inspection of LOX Crib Component

WWW.CHROMEHOOVES.NET



Fig II 14 June 1961 Grafe-Weeks Plant  
Subcontractor's Pipe Fabrication Shop

WWW.CHROMEHOOVES.NET

WWW.CHROMEHOOVES.NET



Fig I 14 June 1961 Grafe-Weeks Plant  
PLS Component Cleaning Facility

WWW.CHROMEHOOVES.NET

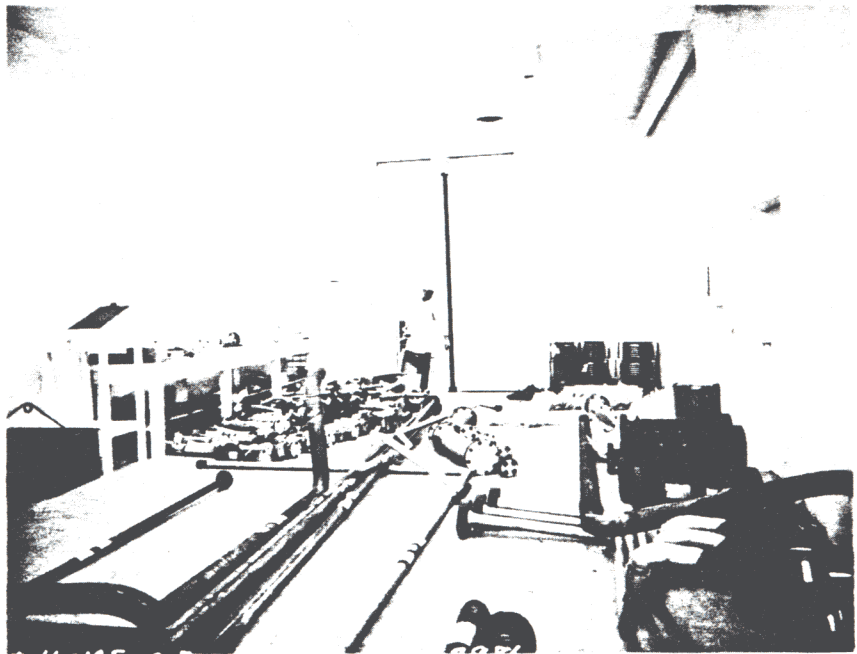


Fig II 14 June 1961 Grafe-Weeks Plant  
PLS Piping in LOX Clean Storage Area

WWW.CHROMEHOOVES.NET



Fig I 15 June 1960 Complex 1A  
Propellant Terminal No. 2 - Position of "C" Pull  
After Backing into Propellant Terminal

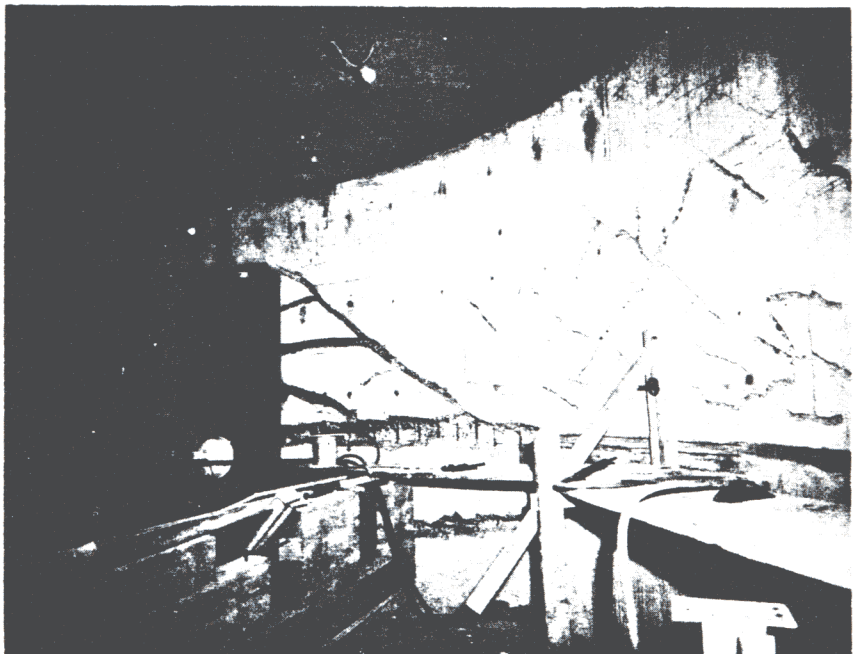


Fig II 4 May 1961 Complex 1A  
Propellant Terminal No. 2 - Cracks Caused by Blast  
for Excavation of Type "D" Tunnel

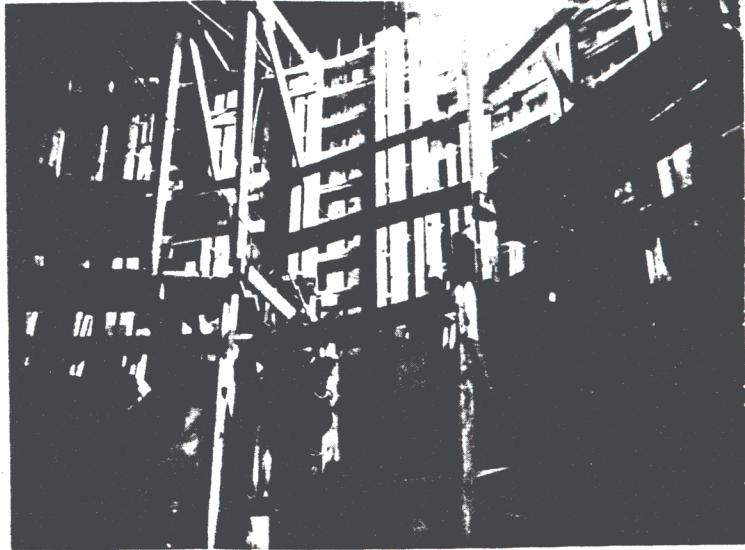


Fig I    21 October 1960    Complex 1C  
Equipment Terminal No. 2 - Carpenter, Fatal Fall,  
Gap in Scaffolding



Fig II    25 May 1961    Complex 1B  
Equipment Terminal No. 1 - Electrician, Fatal Fall  
from Level 3 to Level 1 - Broken Plywood Guard on  
Level 2



WWW.CHROMEHOOVES.NET



Fig I 15 February 1962 Complex 1A  
Portal Silo - Painter, Fatal Fall  
Spring Beams Indicate Body Position

WWW.CHROMEHOOVES.NET

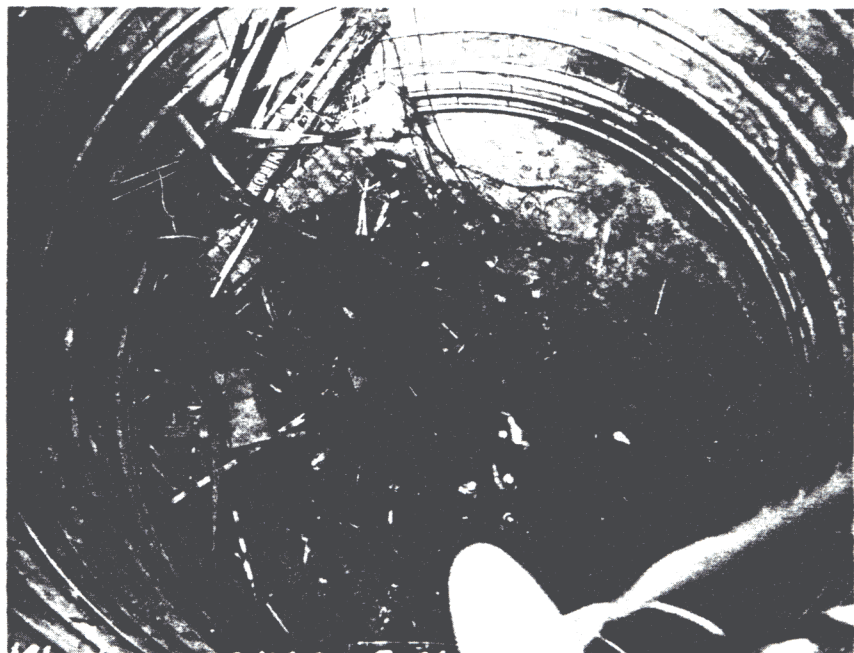


Fig II 26 May 1960 Complex 1C  
Missile Silo - Manitowoc Crane and Front-End Loader  
After 65' Fall to Bottom

WWW.CHROMEHOOVES.NET

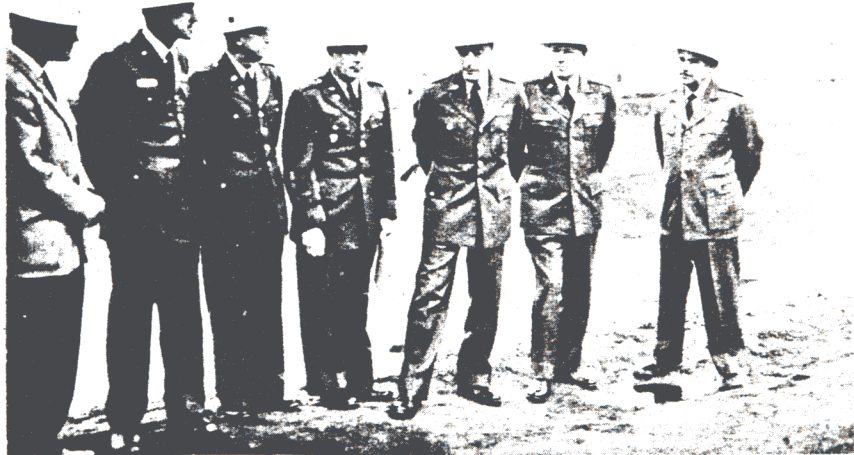


Fig I

12 October 1960  
Change-Over Ceremony

Complex 1C

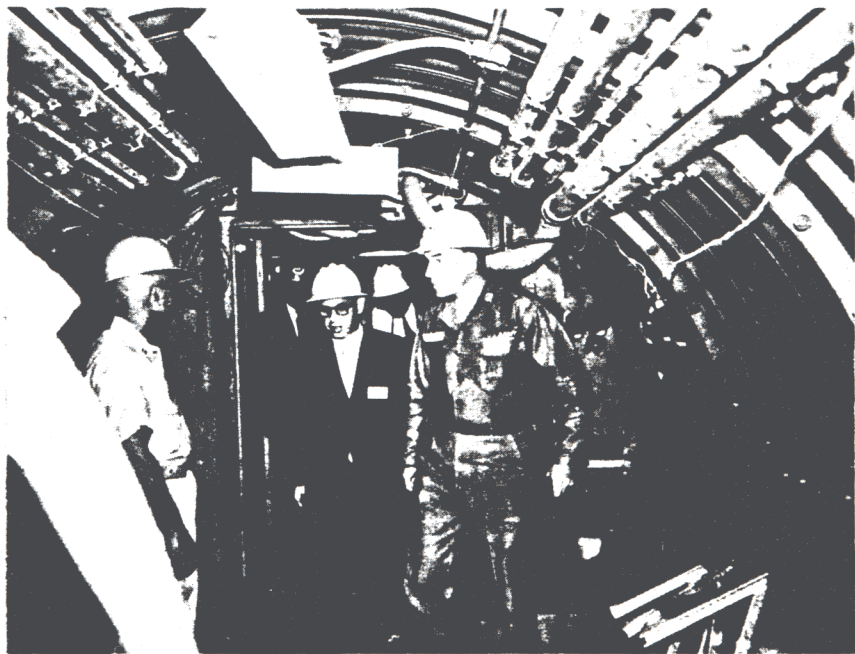


Fig II

1 August 1961  
Arthur J. Goldberg, Secretary of Labor, Touring Site

Complex 1C



Fig I 29 March 1962 Area Office  
Presentation of Air Force Commendation Medal for Meritorious Service to Captain Stanley B. Forbes, Corps of Engineers, by Colonel Harmon E. Burnes, SATAF Commander - Colonel Edmond H. Farrington, Area Engineer, Looks On

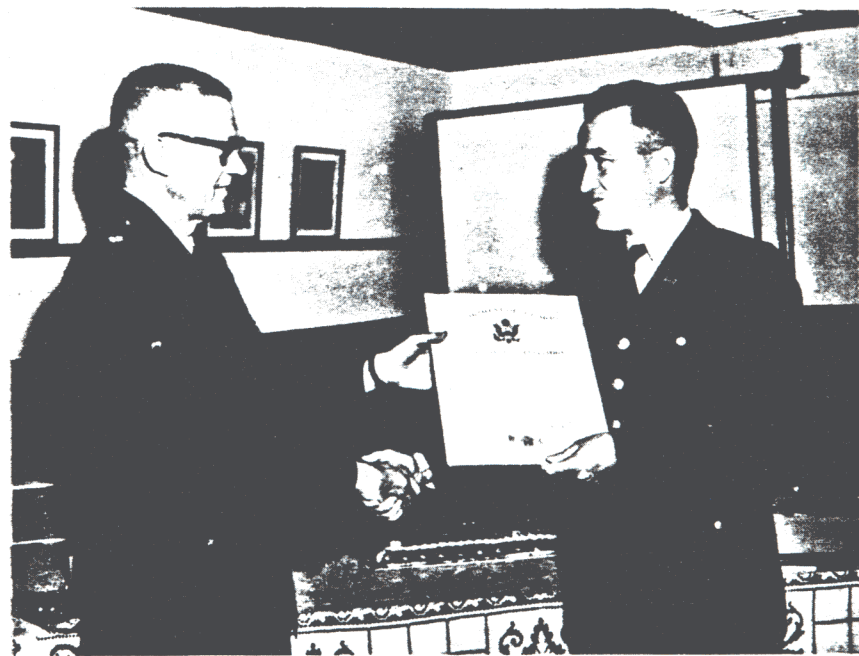
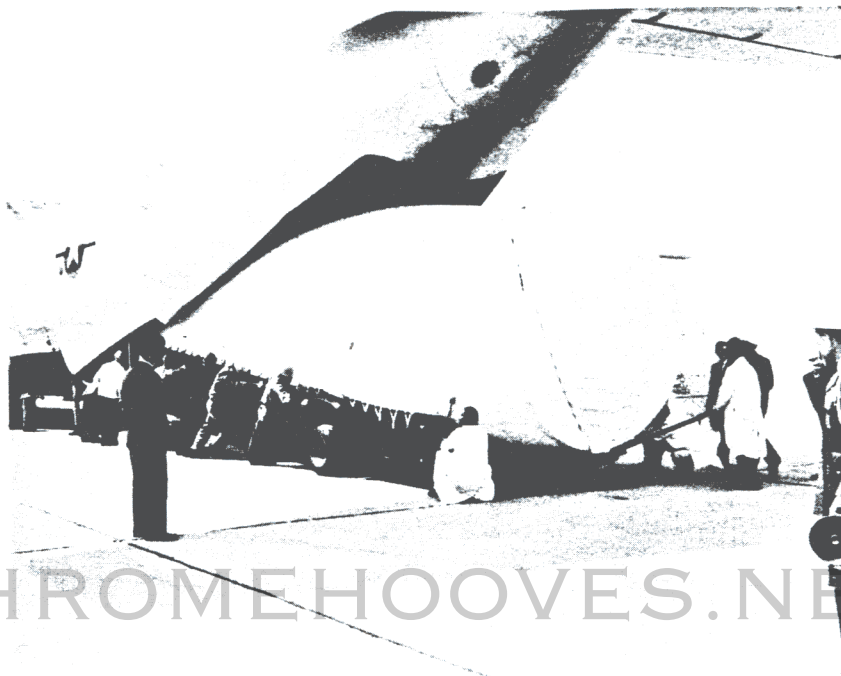


Fig II 22 December 1961 Area Office  
Upon Retirement, Lt. Colonel J R Woodruff, Jr., Receives Certificate of Appreciation from Colonel Edmond H. Farrington, Area Engineer

WWW.CHROMEHOOVES.NET



WWW.CHROMEHOOVES.NET

Fig I 13 April 1962 Mountain Home AFB  
Off-loading first operational Titan I at Mountain Home AFB. This missile was processed through completed on-base facilities and delivered to Complex 1C on 24 April 1962.

WWW.CHROMEHOOVES.NET



Fig I                      13 April 1962                      Mountain Home AFB

Colonel Edmond H. Farrington, Area Engineer, addresses luncheon celebrating arrival of first operational missile on 13 April 1962 and commemorating turn-over of final structure on 19 March 1962 to the Air Force. Left to right are Colonel Walter Y. Lucas, Commander, 9th Bombardment Wing; Colonel Robert V. DeShazo, Executive Officer, 15th Air Force; Colonel Farrington; Colonel Harmon E. Burns, Mountain Home SATAF Commander; Honorable Robert E. Smylie, Governor of the State of Idaho; Mr. Frank Bort, Vice-President of Kaiser Engineers.