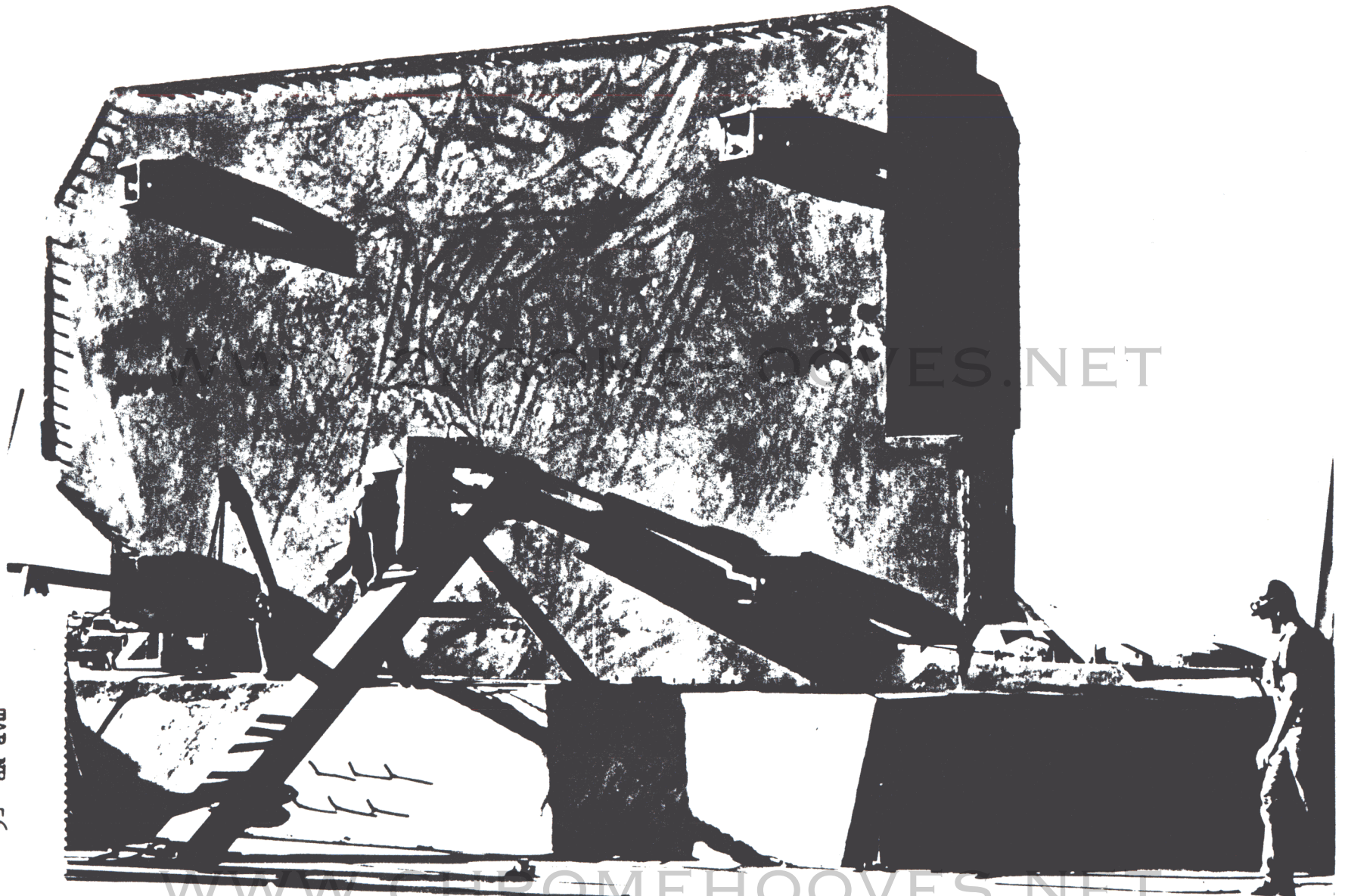


WWW.CHROMEHOOVES.NET



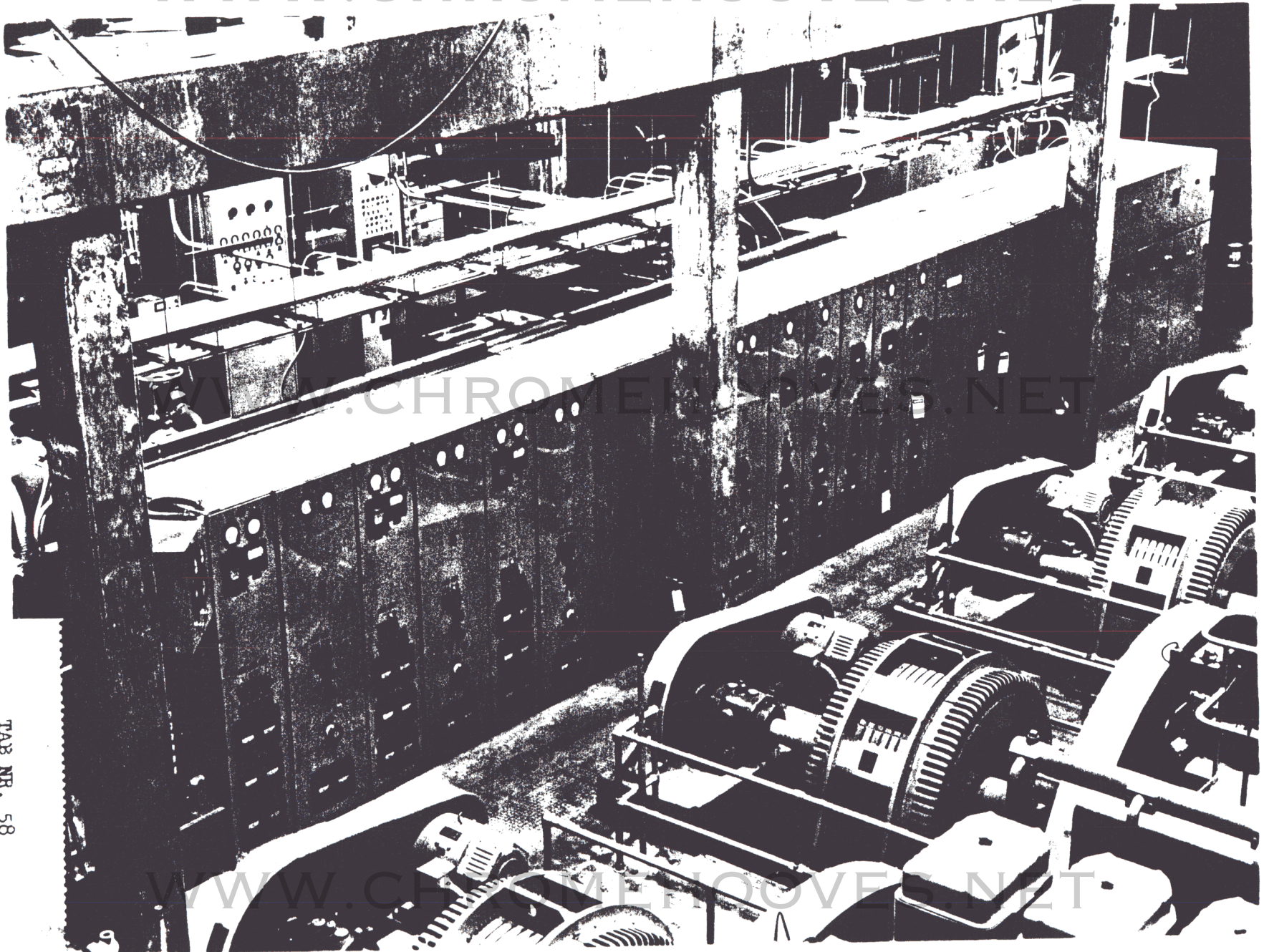
PAGE NR. 2-101

TAB NR. 56

WWW.CHROMEHOOVES.NET



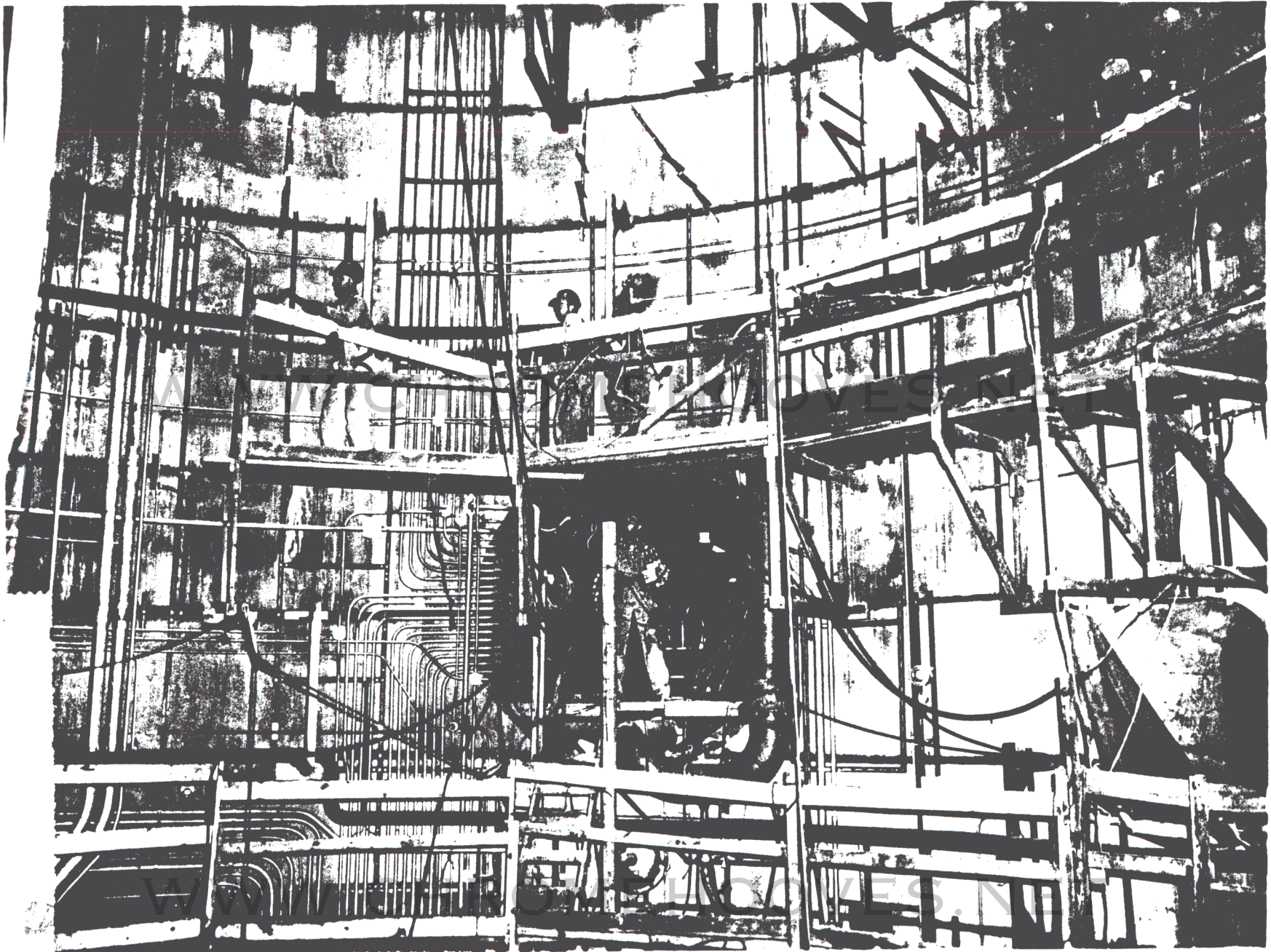
WWW.CHROMEHOOVES.NET



TAB NR. 58
PAGE NR. 2-103

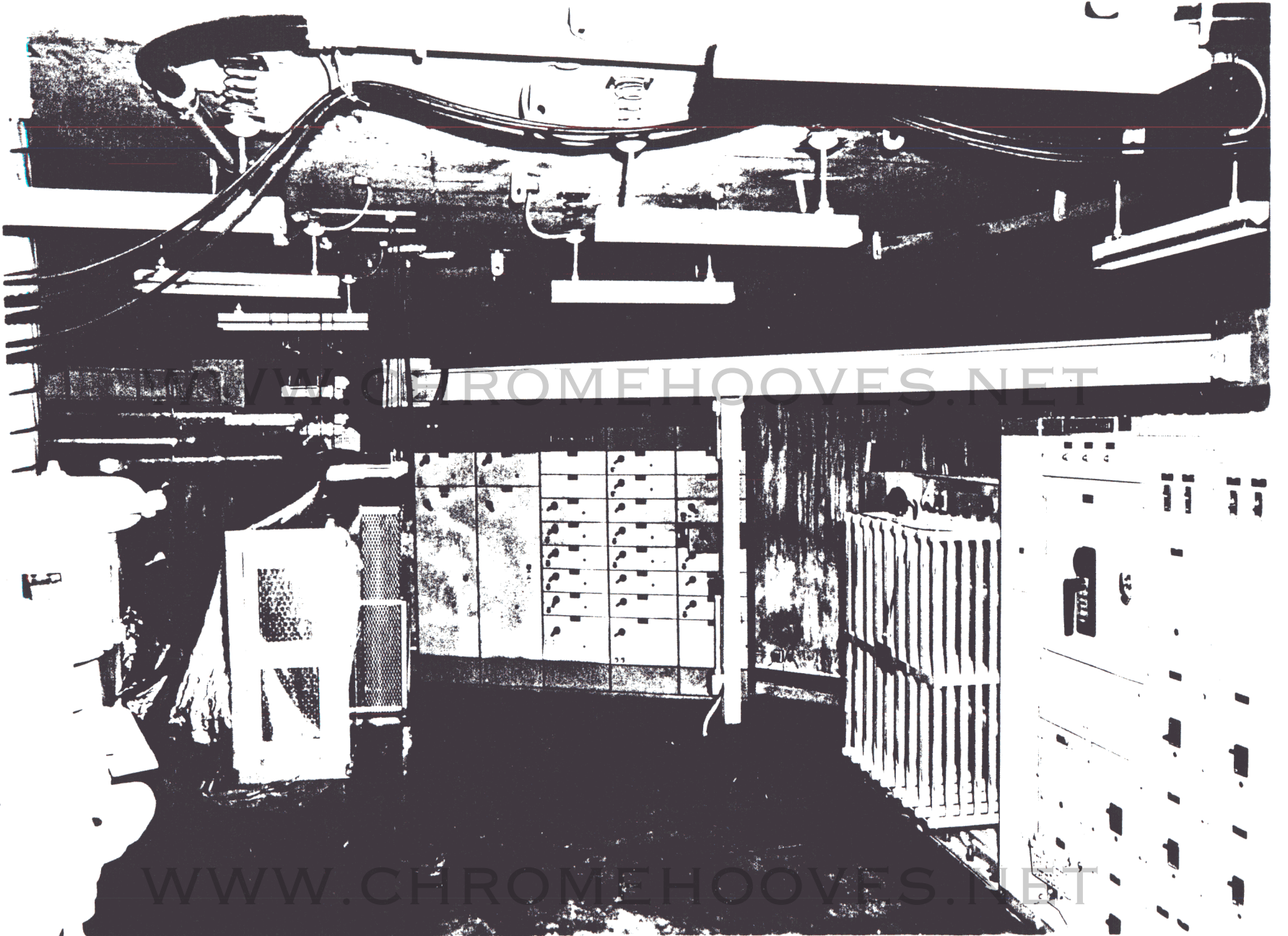
WWW.CHROMEHOOVES.NET

WWW.CHROMEHOOVES.NET



TAB NR. 59
PAGE NR. 2-104

WWW.CHROMEHOOVES.NET

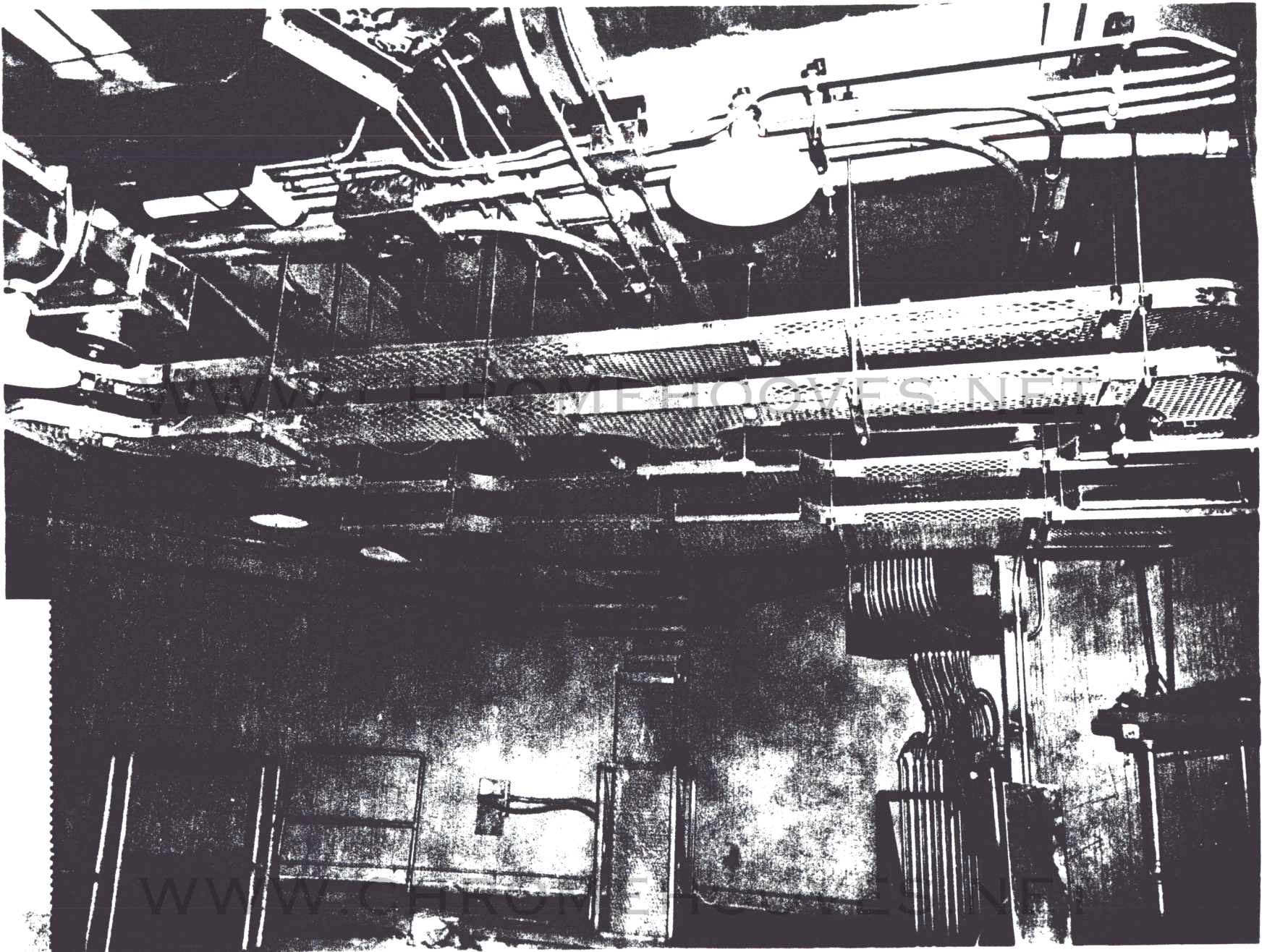


WWW.CHROMEHOOVES.NET

WWW.CHROMEHOOVES.NET

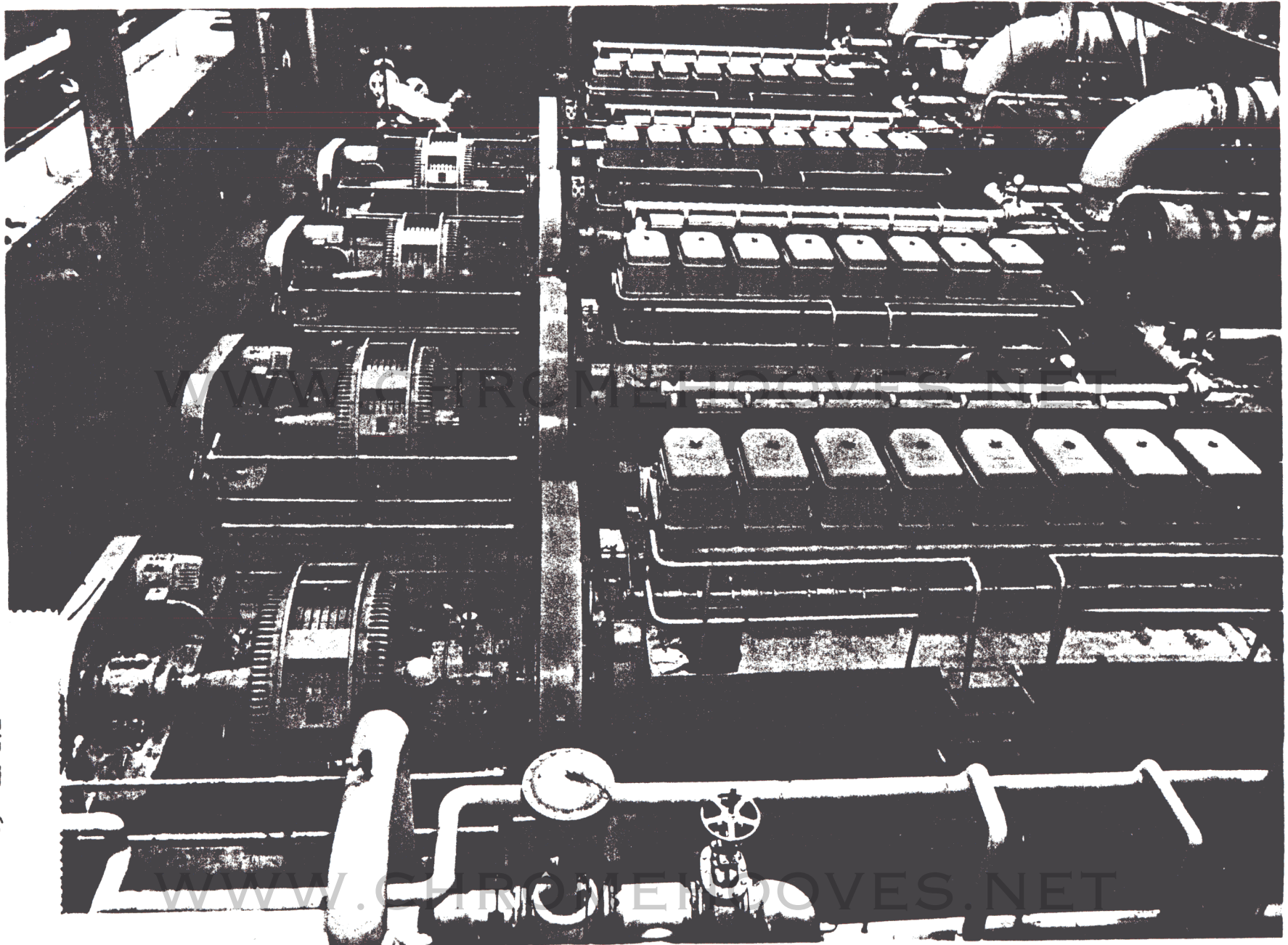
TAB NR. 60
PAGE NR. 2-105

WWW.CHROMEHOOVES.NET



TAB NR. 61
PAGE NR. 2-106

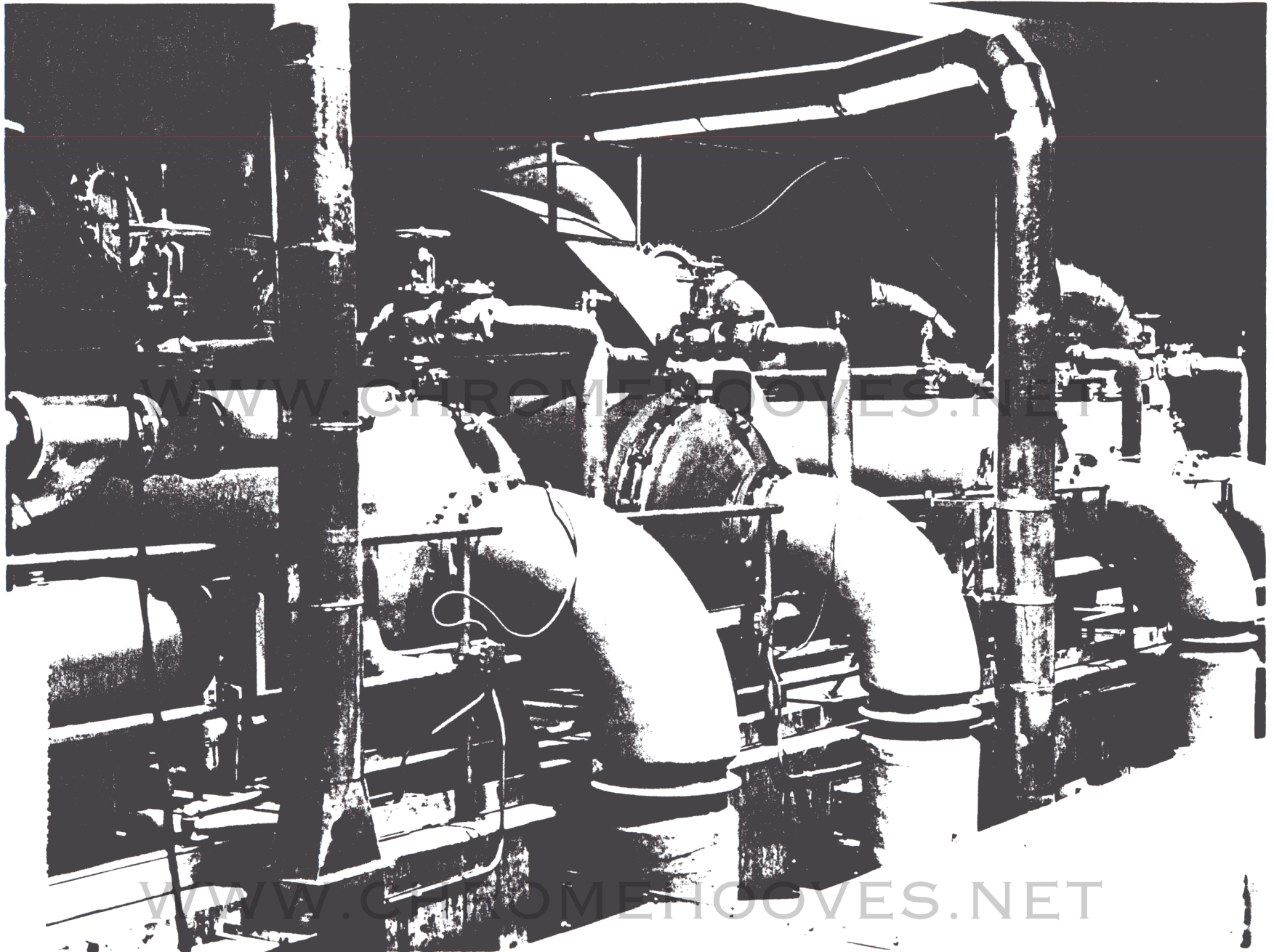
WWW.CHROMEHOOVES.NET



TAB NR. 62
PAGE NR. P-107

WWW.CHROMEHOOVES.NET

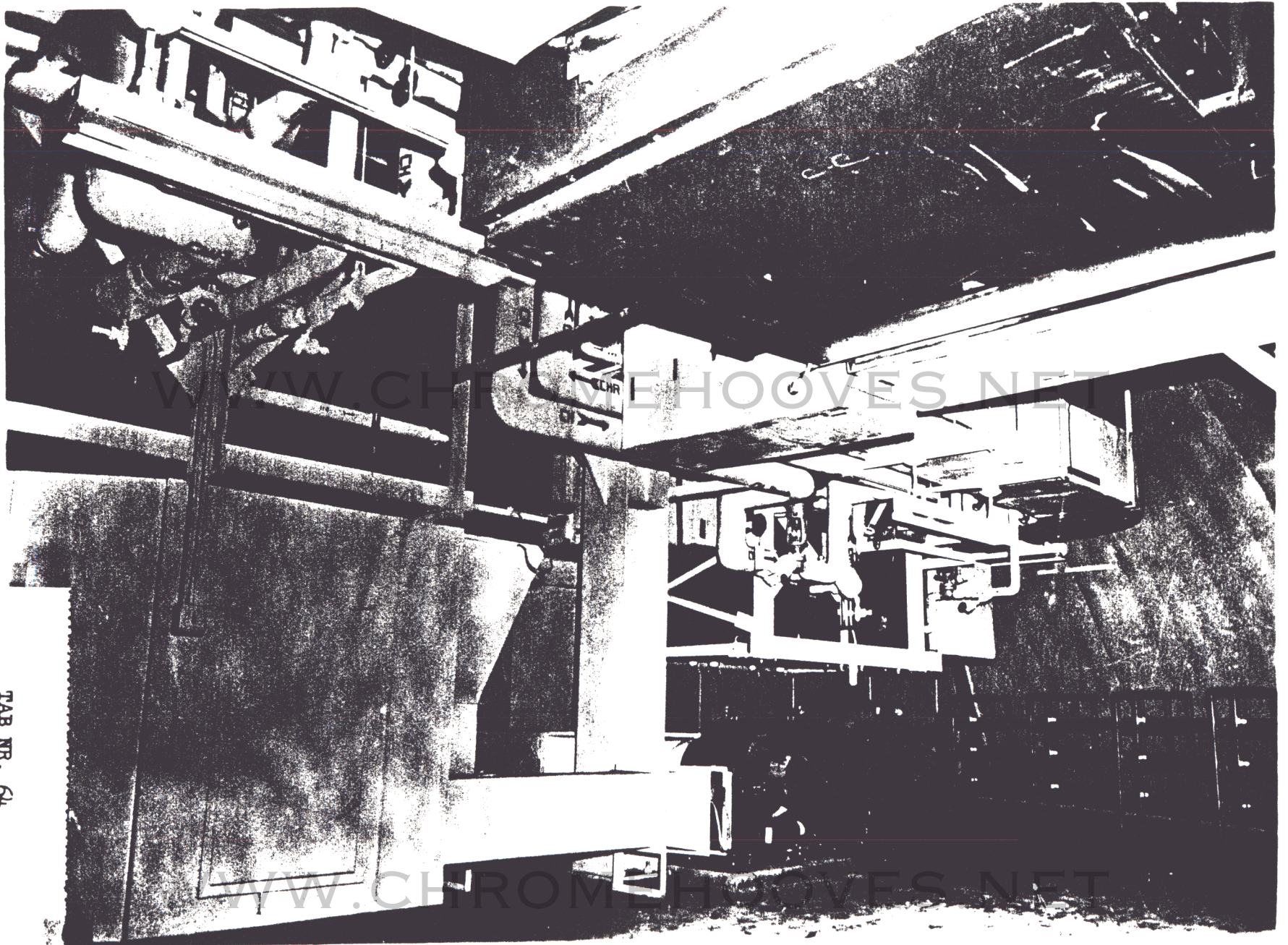
WWW.CHROMEHOOVES.NET



WWW.CHROMEHOOVES.NET

WWW.CHROMEHOOVES.NET

WWW.CHROMEHOOVES.NET



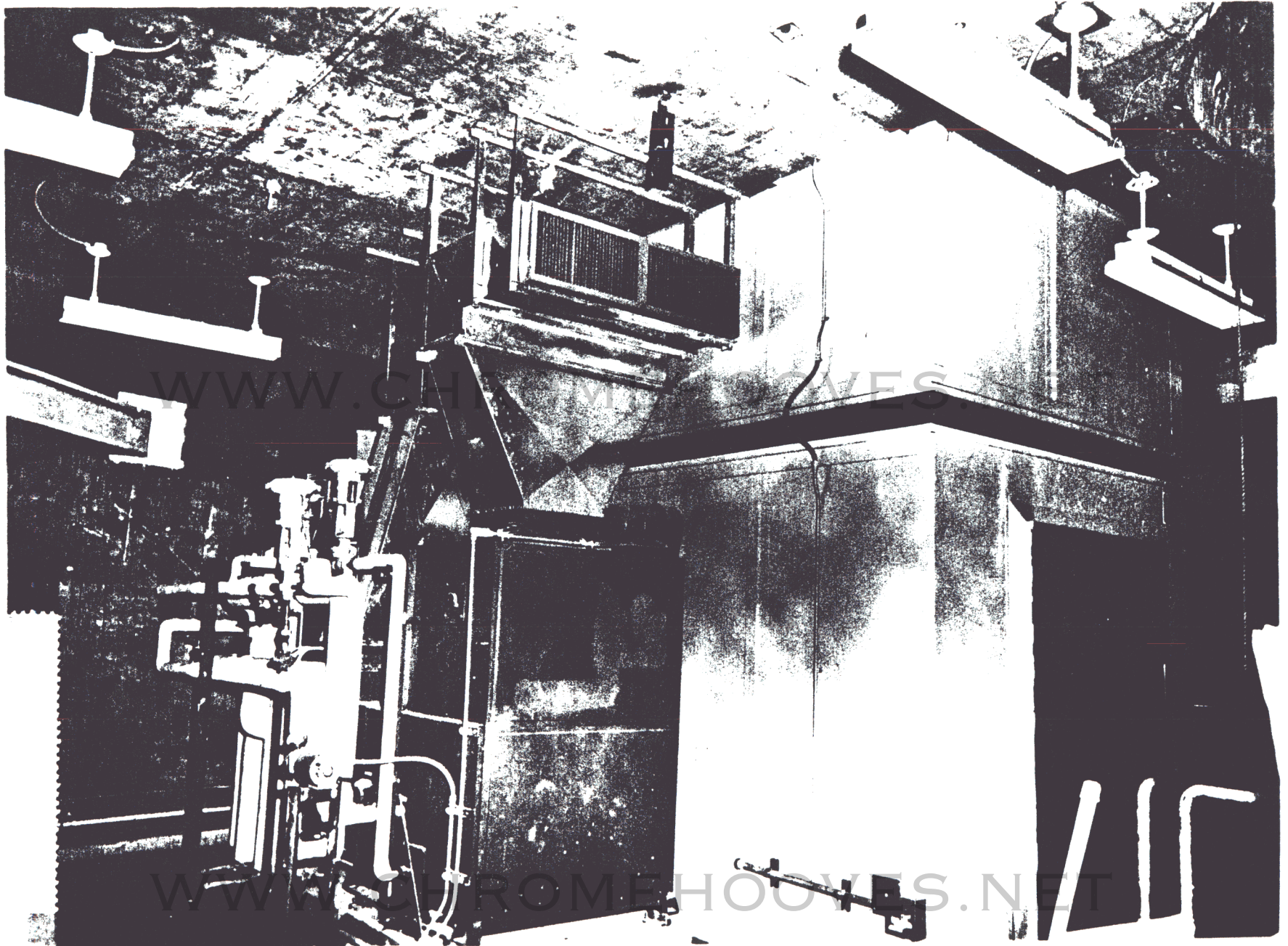
WWW.CHROMEHOOVES.NET

WWW.CHROMEHOOVES.NET

TAB NR. 64

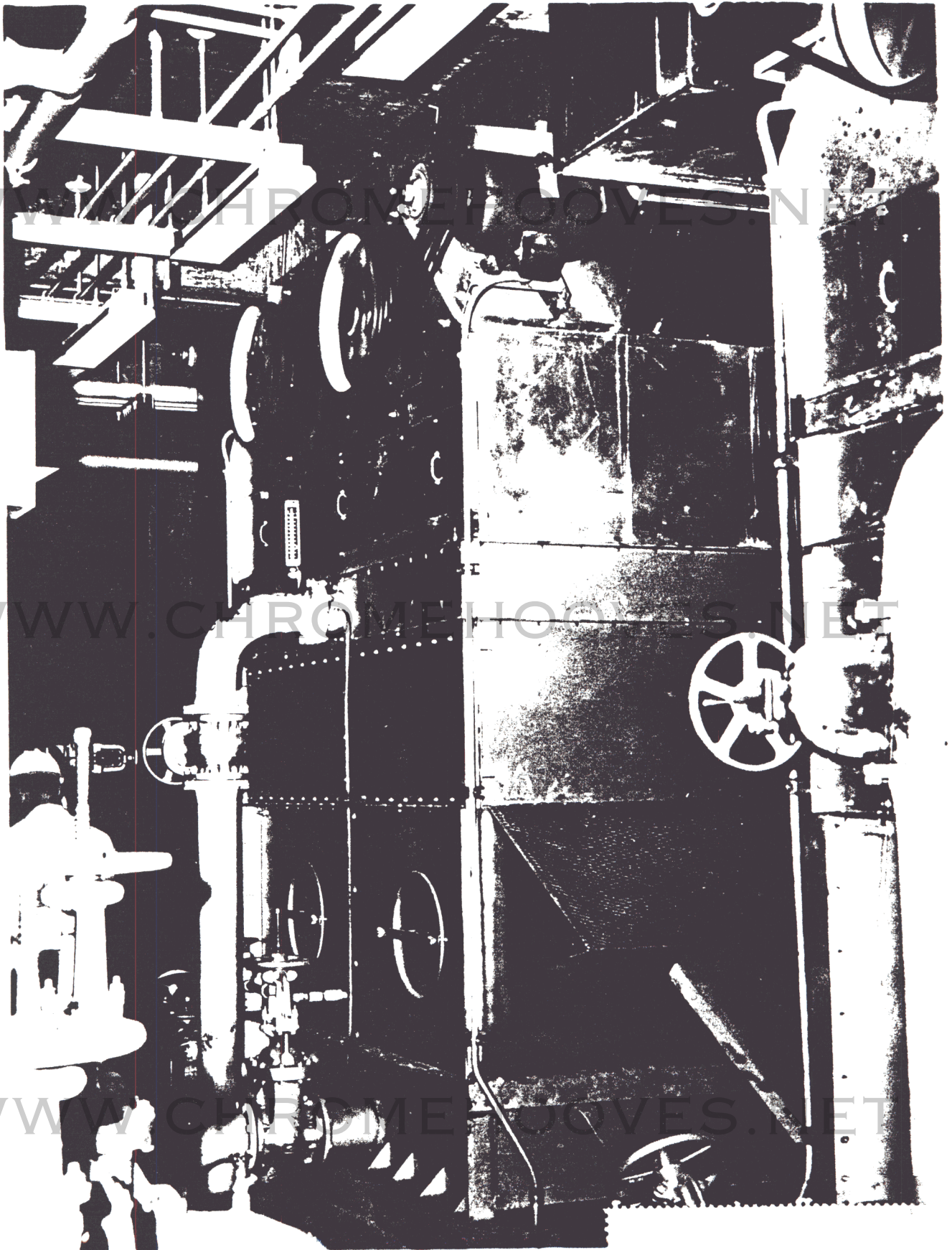
PAGE NR. 2-109

WWW.CHROMEHOOVES.NET



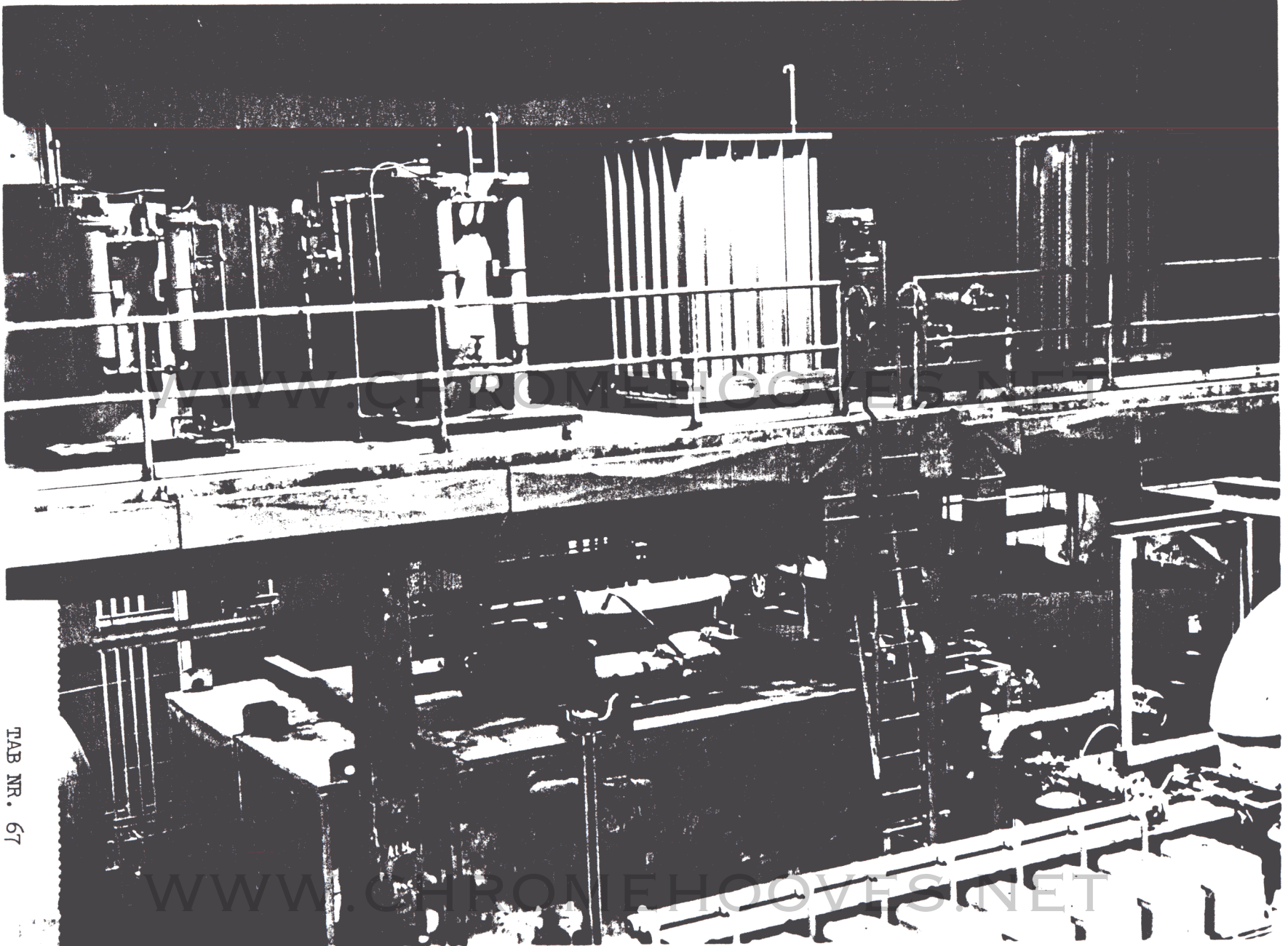
TAB NR. 65
PAGE NR. 2-110

WWW.CHROMEHOOVES.NET



TAB NR. 66
PAGE NR. 2-111

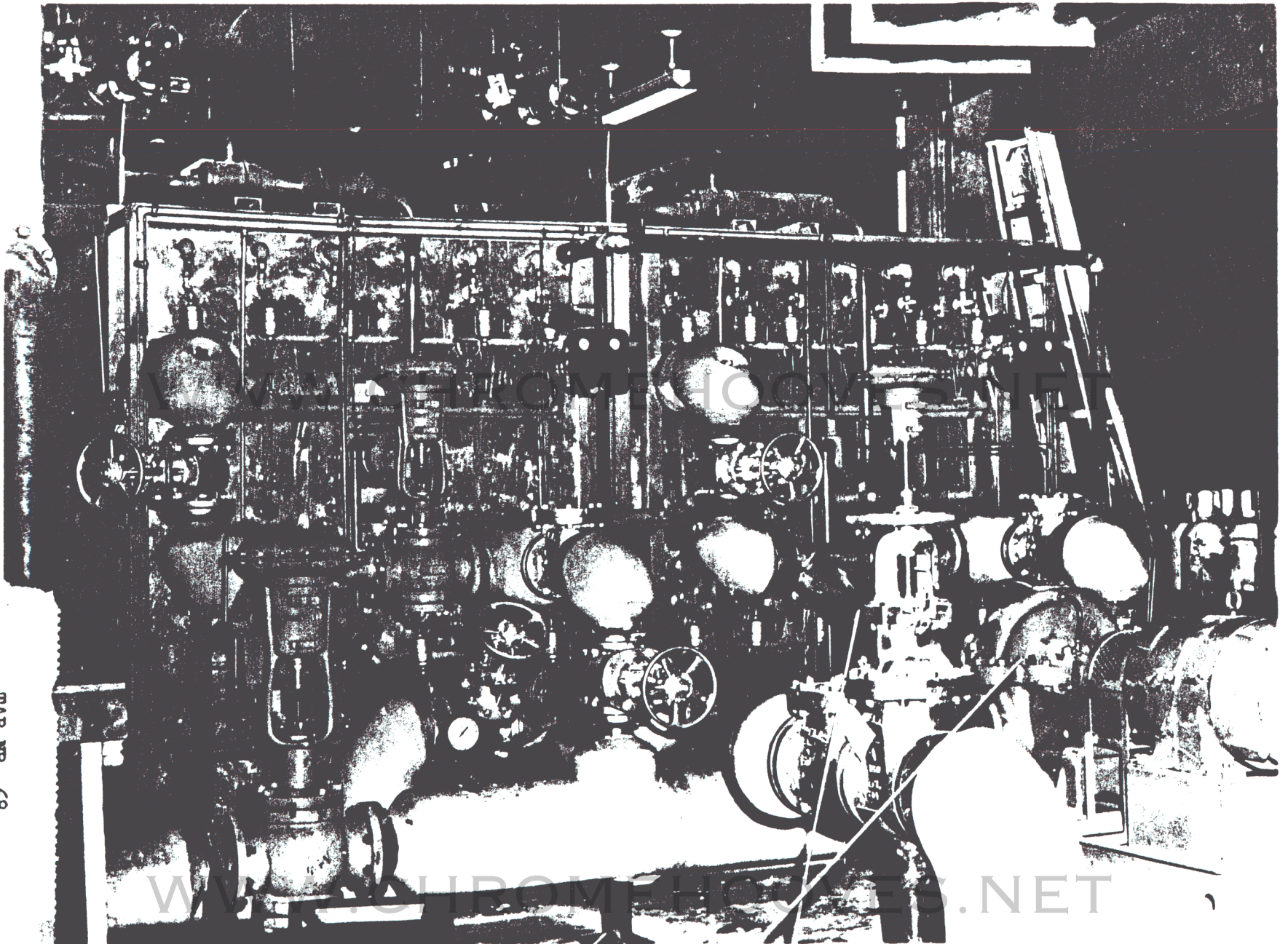
WWW.CHROMEHOOVES.NET



TAB NR. 67
PAGE NR. 2-112

WWW.CHROMEHOOVES.NET

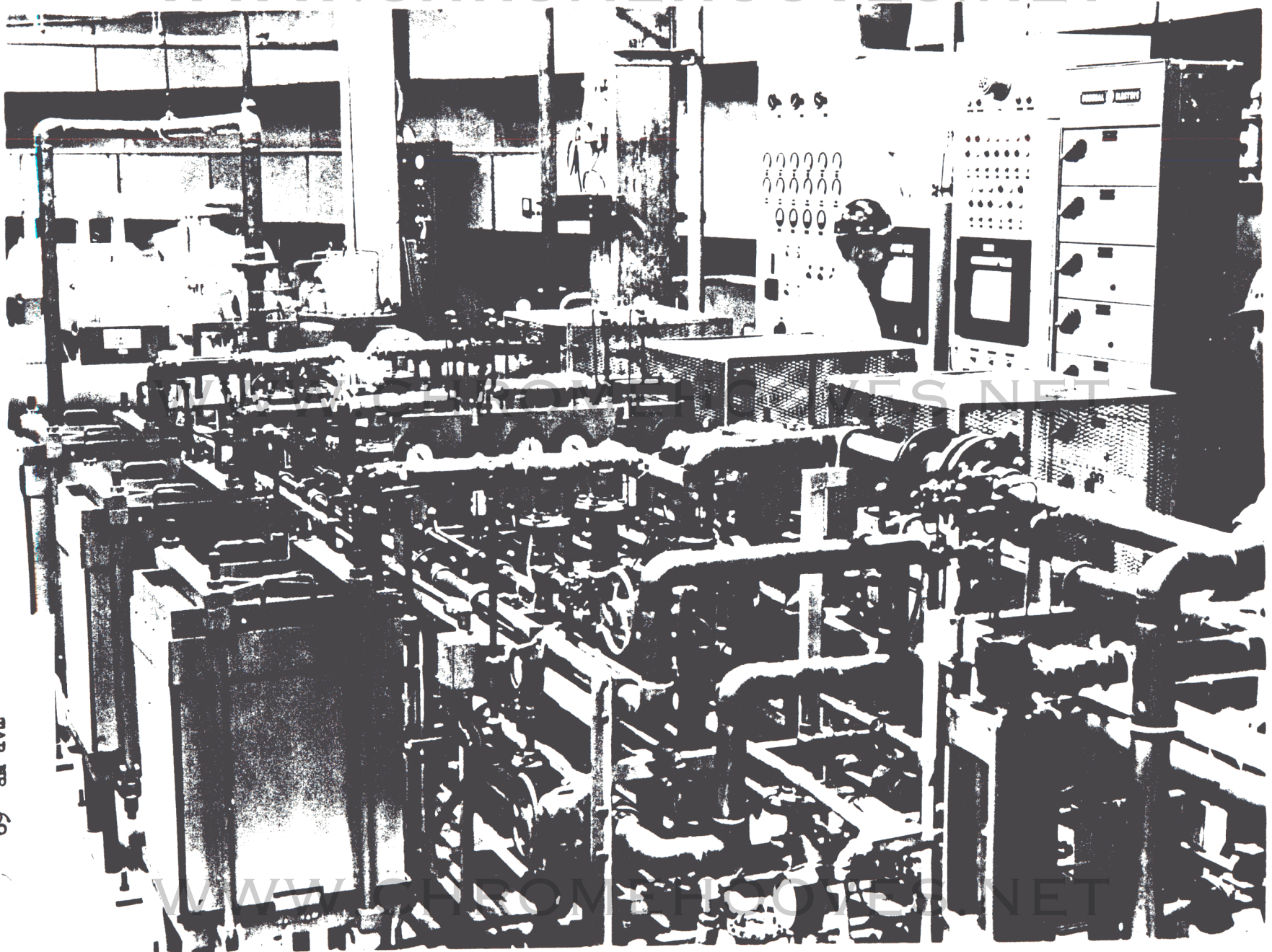
WWW.CHROMEHOOVES.NET



TAB NR. 68
PAGE NR. 2-113

WWW.CHROMEHOOVES.NET

WWW.CHROMEHOOVES.NET

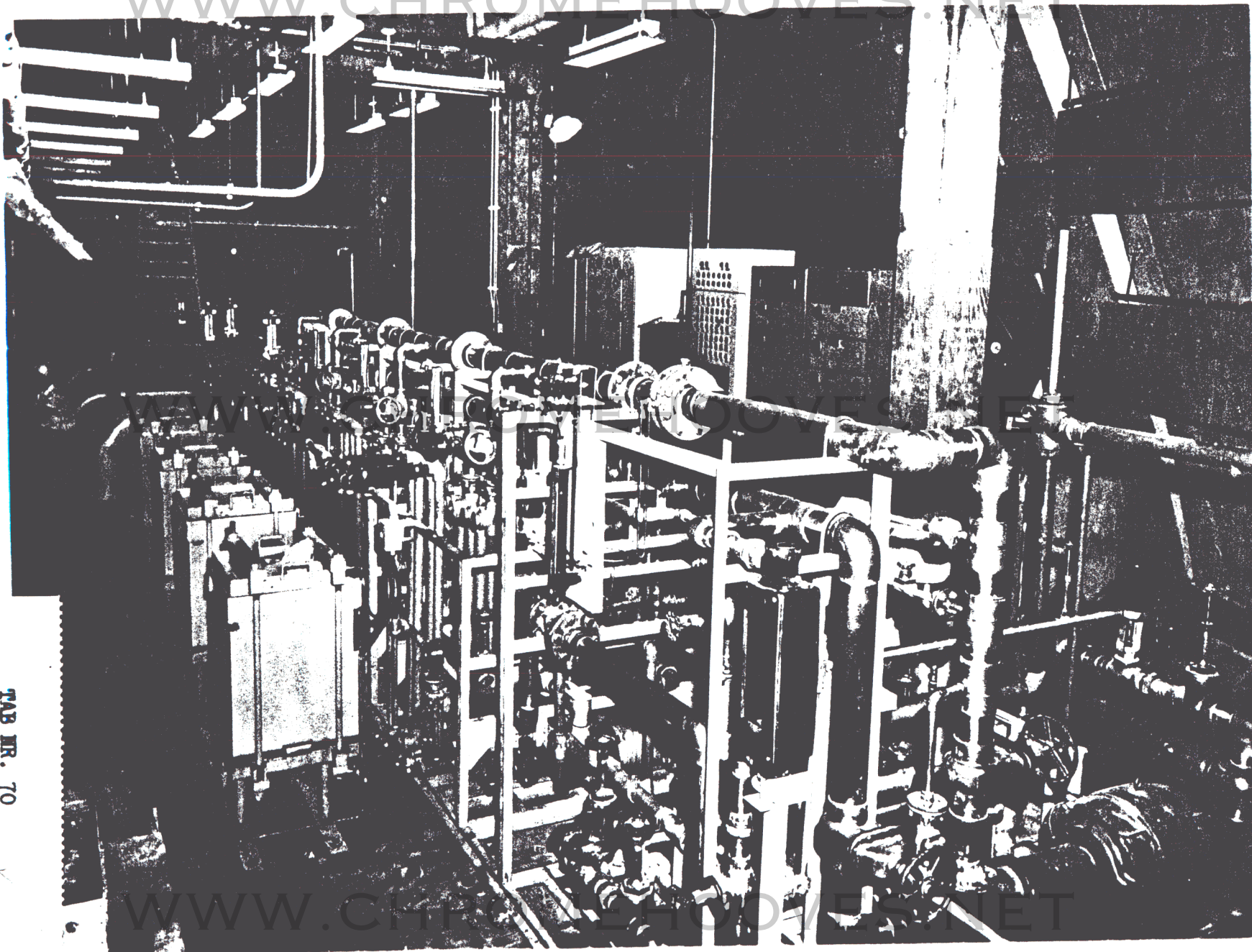


PAGE NR. 2-114

TAB NR. 69

WWW.CHROMEHOOVES.NET

WWW.CHROMEHOOVES.NET



TAB NR. 70
PAGE NR. 2-115

WWW.CHROMEHOOVES.NET

WWW.CHROMEHOOVES.NET



TAB NR. 71
PAGE NR. 2-116

ENG FORM 290 AND BOA SUBMITTAL DATA

COMPLEX 1A

STRUCTURES SUBMITTED	VOUCHER NO.	290 DATE	SENT TO A.F.	SIGNED
POWERHOUSE (1 Partial)	C-82	3 August 1961	5 August 1961	8 Aug. 1961
CONTROL CENTER (2 Partial)	C-74	16 June 1961	16 June 1961	14 July 61
ANTENNA SILOS, TERMINAL & ORIENTATION TARGETS (3 Partial)	C-98	5 August 1961	17 Aug. 1961	5 Sept. 61
EQUIPMENT TERMINALS NO. 1, 2, and 3 (4 Partial)	C-103	23 August 1961	30 Oct. 1961	15 Nov. 61
TUNNELS, T.J.'S, BLAST LOCKS & LAF (8 Partial)	C-160	27 Oct. 1961	15 Nov. 1961	6 Dec. 1961
ACCESS & ON-SITE ROADS (5 Partial)	C-126	27 Sept. 1961	28 Sept. 1961	27 Oct. 1961
PORTAL SILO (9 Partial)	C-130	21 Oct. 1961	31 Oct. 1961	14 Nov. 1961
MISSILE SILOS NO. 1, 2, & 3 (7 Partial)	C-117	22 Sept. 1961	15 Nov. 1961	5 Dec. 1961
"C" TUNNELS (6 Partial)	C-119	22 Sept. 1961	26 Sept. 1961	20 Nov. 1961
PROPELLANT TERMINALS NO. 1, 2, and 3 (12 Final)	C-168	10 Nov. 1961	(BOA) 18 Nov. 1961 13 Dec. 1961	(BOA) 30 Nov. 1961 8 Jan. 1962
PROPELLANT LOADING SYSTEM (11 Partial)	C-167	4 Nov. 1961	(BOA) 18 Nov. 1961 13 Dec. 1961	(BOA) 30 Nov. 1961 8 January 1962
SURFACE FACILITIES (10 Partial)	C-166	14 Nov. 1961	16 Nov. 1961	4 Dec. 1961

ENG FORM 290 AND BCA SUBMITTAL DATA

COMPLEX 1B

STRUCTURES SUBMITTED	VOUCHER NO.	290 DATE	SENT TO A.F.	SIGNED
POWERHOUSE (2 Partial)	C-51	8 May 1961	16 May 1961	17 May 61
CONTROL CENTER (1 Partial)	C-54	1 May 1961	5 May 1961	24 May 1961
ANTENNA SILOS, TERMINAL & ORIENTATION TARGETS (3 Partial)	C-88	23 July 1961	3 Aug. 1961	5 Sept 1961
EQUIPMENT TERMINALS NO. 1, 2, and 3 (4 Partial)	C-97	4 August 1961	12 Aug. 1961	5 Sept 1961
TUNNELS, T.J.'S, BLAST LOCKS & LAF (6 Partial)	C-99	30 Aug. 1961	16 Oct. 1961	1 Nov. 1961
ACCESS & ON SITE LOADS (5 Partial)	C-100	14 Aug. 1961	16 Aug. 1961	11 Sept. 1961
PORTAL SILO (1 Partial)	C-101	19 Aug. 1961	23 Aug. 1961	5 Sept. 1961
MISSILE SILOS NO. 1, 2, and 3 (7 Partial)	C-105	1 Sept. 1961	17 Oct. 1961	3 Nov. 1961
"C" TUNNELS (8 Partial)	C-111	6 Sept. 1961	16 Oct. 1961	1 Nov. 1961
PROPELLANT TERMINAL NO. 1, 2, and 3 (Final)	C-152	14 Oct. 1961	(BOA) 25 Nov. 1961 13 Dec. 1961	(BOA) 30 Nov. 1961 8 Jan. 1962
PROPELLANT LOADING SYSTEM (10 Partial)	C-150	14 Oct. 1961	(BOA) 25 Nov. 1961 13 Dec. 1961	(BOA) 30 Nov. 1961 8 Jan. 1962
SURFACE FACILITIES (11 Partial)	C-151	10 Oct. 1961	12 Oct. 1961	3 Nov. 1961

TAB NR. 73

PAGE NR. 2-118

ENG FORM 290 AND BOA SUBMITTAL DATA

COMPLEX 1C

STRUCTURES SUBMITTED	VOUCHER NO.	290 DATE	SENT TO A.F.	SIGNED
POWERHOUSE (1 Partial)	C-106	28 August 1961	26 October 1961	3 Nov. 1961
CONTROL CENTER (1 Partial)	C-84	19 July 1961	27 July 1961	8 Aug. 1961
ANTENNA SILOS, TERMINAL & ORIENT. TARGETS (2 Partial)	C-102	11 August 1961	3 Nov. 1961	21 Nov. 1961
EQUIPMENT TERMINALS NO. 1, 2, and 3 (3 Partial)	C-104	31 August 1961	(BOA) 5 October 1961 15 Dec. 1961	(BOA) 11 Oct. 1961 11 Jan. 1962
TUNNELS, T.J.'S BLAST LOCKS & LAF (6 Partial)	C-177	27 Nov. 1961	(BOA) 4 Dec. 1961 15 Dec. 1961	(BOA) 11 Dec. 1961 16 Jan. 1962
ACCESS & ON SITE ROADS (10 Partial)	C-185	4 Dec. 1961	5 Dec. 1961	22 Dec. 1961
PORTAL SILO (8 Partial)	C-182	30 Nov. 1961	(BOA) 1 Dec. 1961 15 Dec. 1961	(BOA) 9 Dec. 1961 9 Jan. 1962
MISSILE SILOS NO. 1, 2, and 3 (5 Partial)	C-176	24 Oct. 1961	(BOA) 1 Dec. 1961 15 Dec. 1961	(BOA) 11 Dec. 1961 9 Jan. 1962
"C" TUNNELS (7 Partial)	C-129	29 Sept. 1961	3 Nov. 1961	21 Nov. 1961
PROPELLANT TERMINALS NO. 1, 2, and 3 (12 Final)	C-202	11 Dec. 1961	(BOA) 15 Dec. 1961 19 Dec. 1961	(BOA) 18 Dec. 1961 12 Jan. 1962
PROPELLANT LOADING SYSTEM (11 Partial)	C-187	5 Dec. 1961	(BOA) 15 Dec. 1961 19 Dec. 1961	(BOA) 18 Dec. 1961 12 Jan. 1962
SURFACE FACILITIES (9 Partial)	C-186	4 Dec. 1961	6 Dec. 1961	14 Dec. 1961

TAB NR. 74

PAGE NR. 2-119