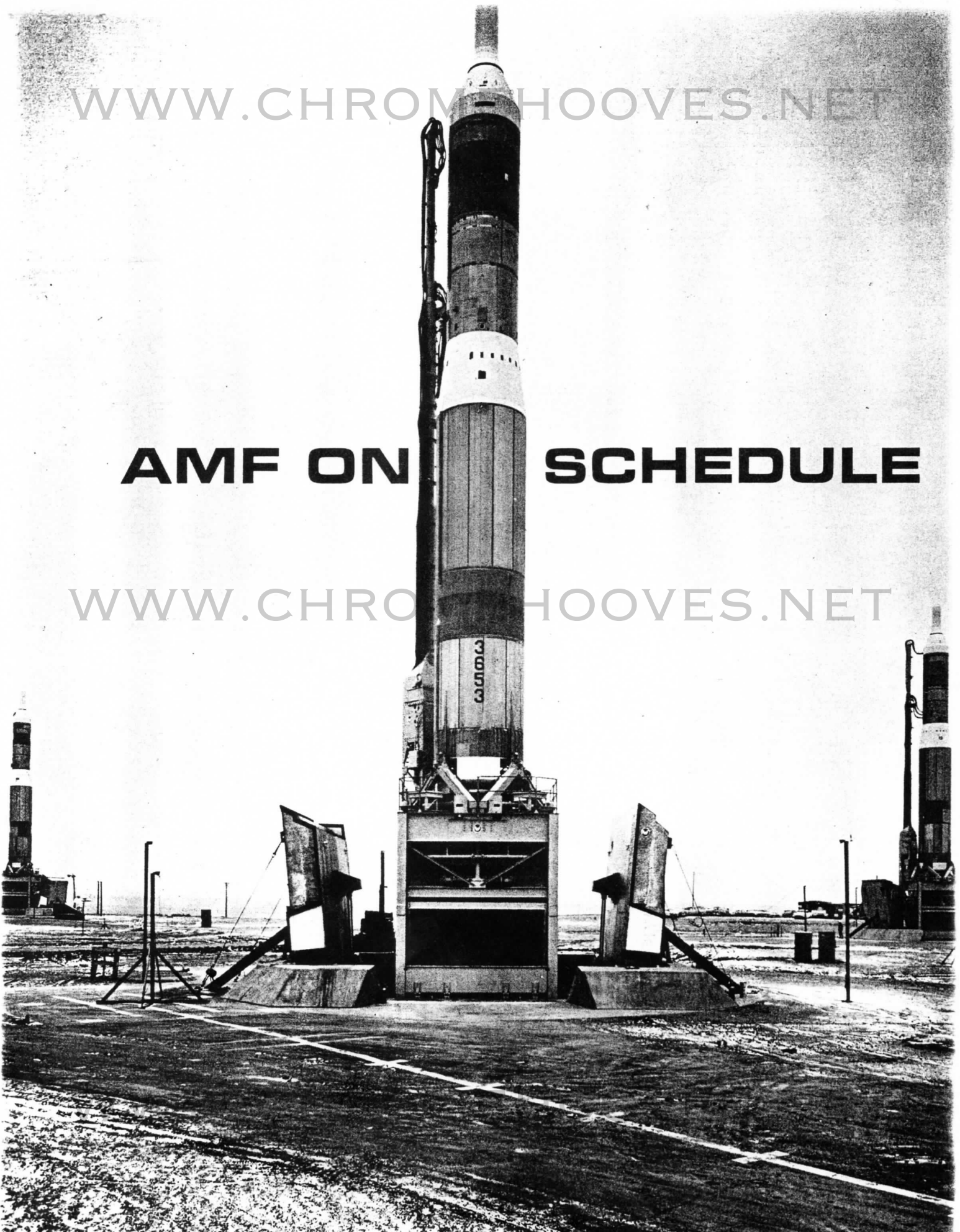


WWW.CHROMHOOVES.NET

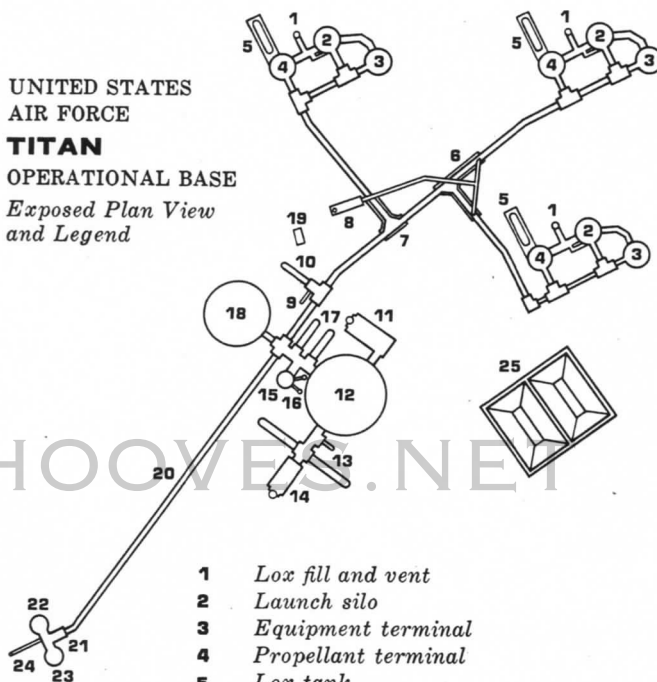
AMF ON SCHEDULE

WWW.CHROMHOOVES.NET



*They worked and lived in Nature's
grasp—in
fields as plain as prairie, in rain
as wet as ocean,
in day and night wind and snow
as cold as hell.*

UNITED STATES
AIR FORCE
TITAN
OPERATIONAL BASE
*Exposed Plan View
and Legend*



- 1 Lox fill and vent
- 2 Launch silo
- 3 Equipment terminal
- 4 Propellant terminal
- 5 Lox tank
- 6-7 Blast Locks
- 8 Launcher area air filtration facility
- 9 N₂ Tank
- 10 Missile fuel tank
- 11 Powerhouse air filtration facility
- 12 Powerhouse
- 13 Diesel oil tanks
- 14 Powerhouse exhaust facility
- 15 Portal
- 16 TV camera and instrument mounts
- 17 Water storage tanks
- 18 Control center
- 19 Chemical waste clarifier
- 20 Personnel tunnel
- 21 Antenna terminal
- 22 Antenna No. 1
- 23 Antenna No. 2
- 24 Exhaust Vent
- 25 Sewage stabilization pond

*"A chain of fantastic fortresses deep
in the earth—built to house Titans,
Atlases and Minutemen . . . The big-
gest construction job in history . . ."*

THE READER'S DIGEST

TITAN I—the Nation's first hard based intercontinental ballistic missile—defends freedom today in over 50 underground "cities" spread throughout the American West. Thousands of 20th Century American patriots labored on-line for five fast years, and in every corner and every weather of America, to build the Titan.

Men of a U.S. Air Force—AMF Team served the cause together via a process of concurrency established by the Air Force. They invented, designed, manufactured, installed and activated Titan's massive aerospace launching system. Throughout the period of hurry, quality and technical excellence were paramount. The system protects the ICBM from destruction by nuclear attack, opens its 260 tons of silo doors, and elevates the Martin-made missile with speed and tender care, from 14 stories underground to firing position. Necessity fathered the Titan and its fail-safe launcher system. The men who did the job followed the dictates of their individual hearts. They worked together . . . and apart—for all segments of Titan were developed concurrently. They gave the best in them to single purposefulness.

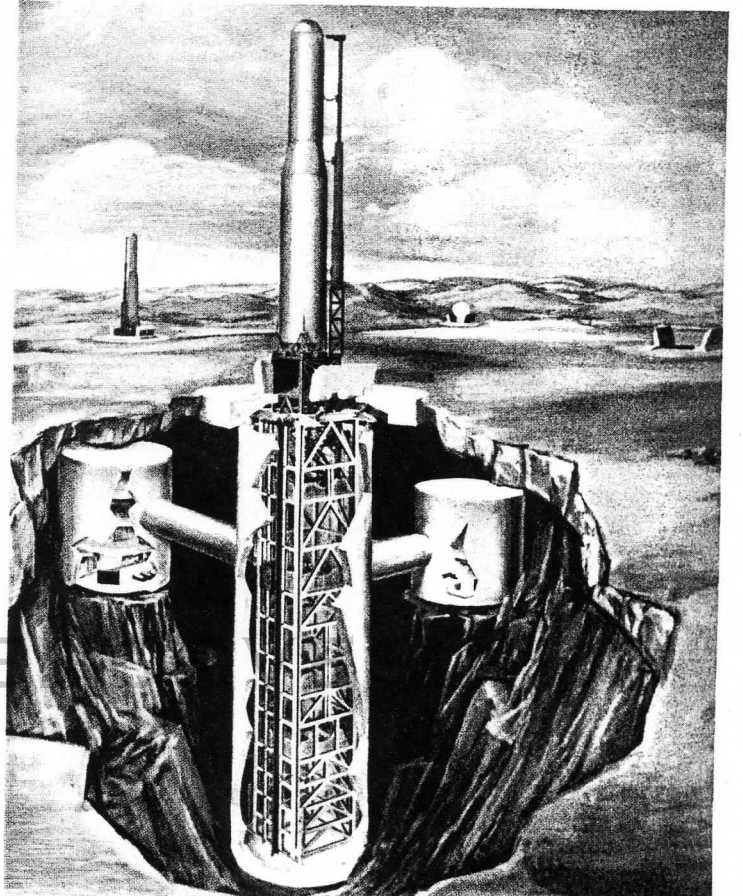
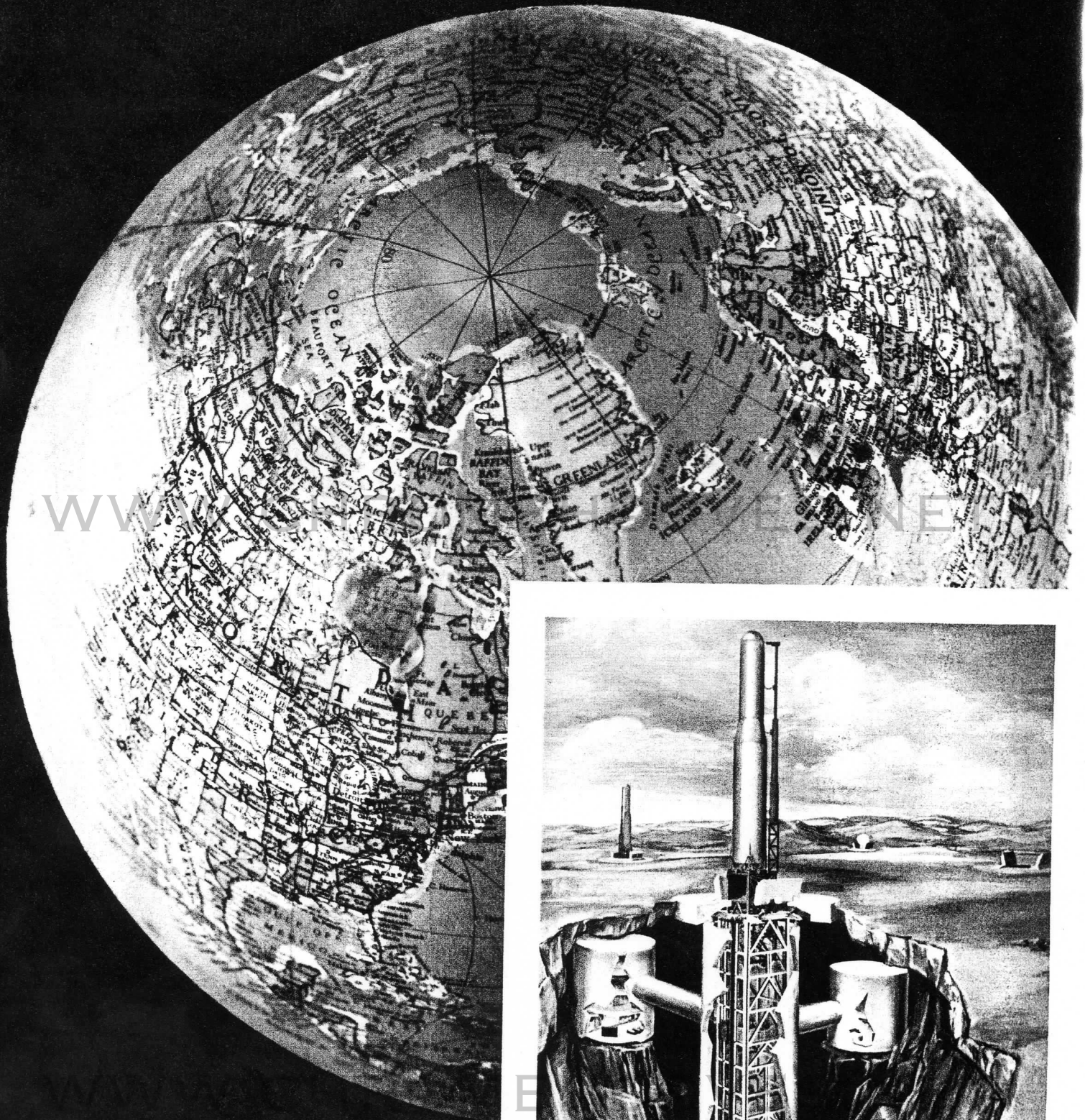




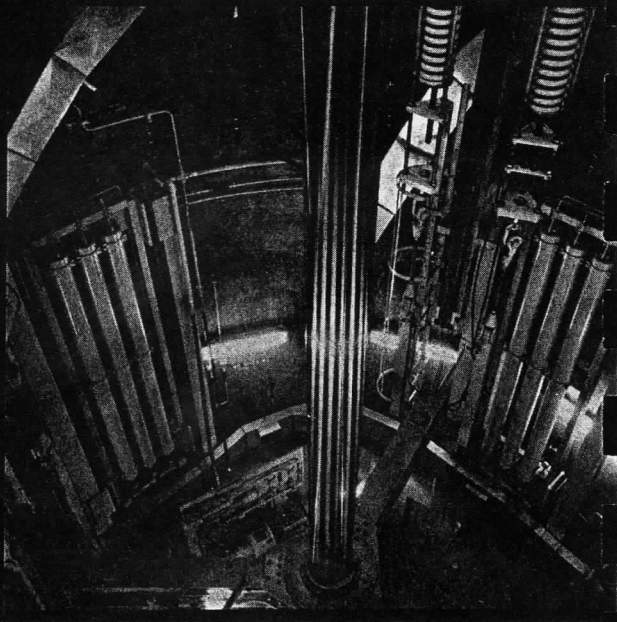
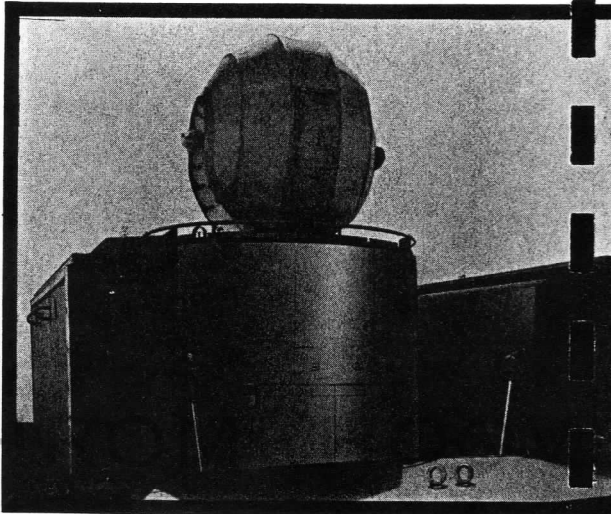
WWW.CHROMEHOOVES.NET

WWW

WWW.CHROMEHOOVES.NET



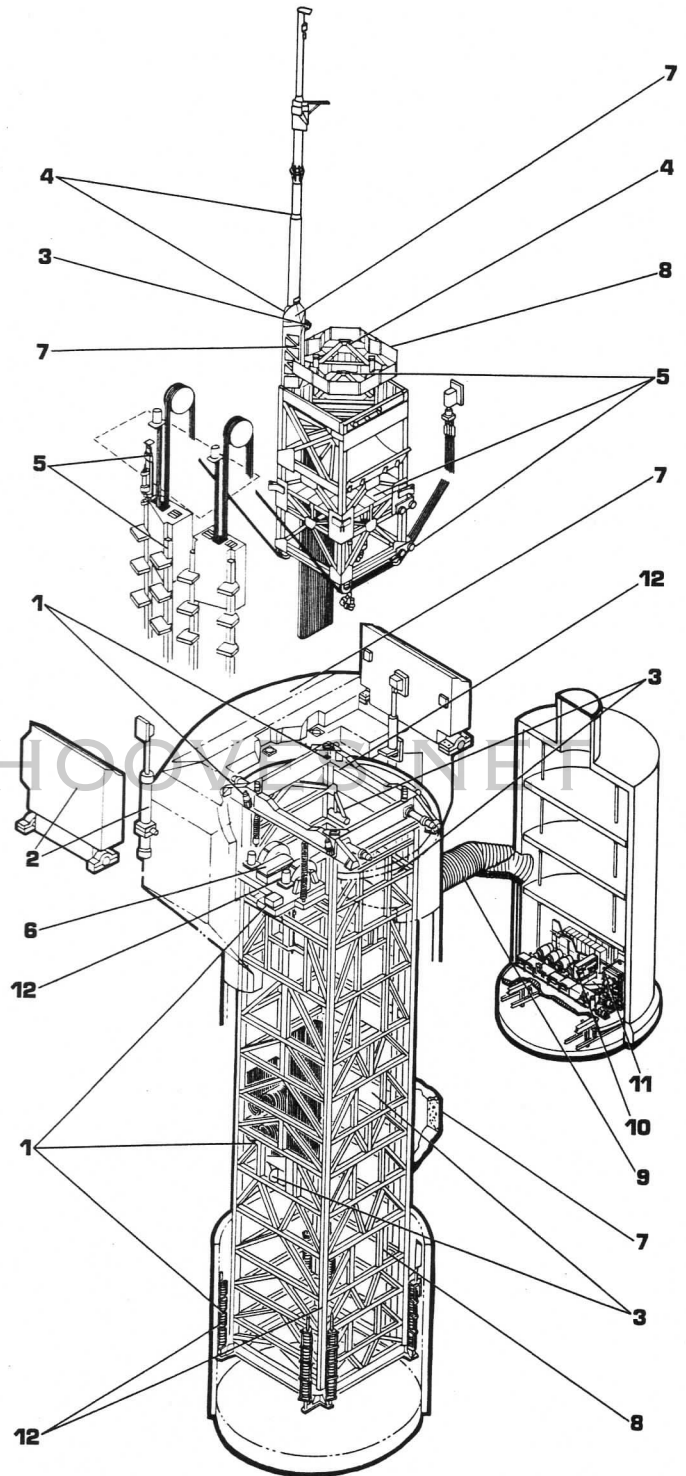
APD

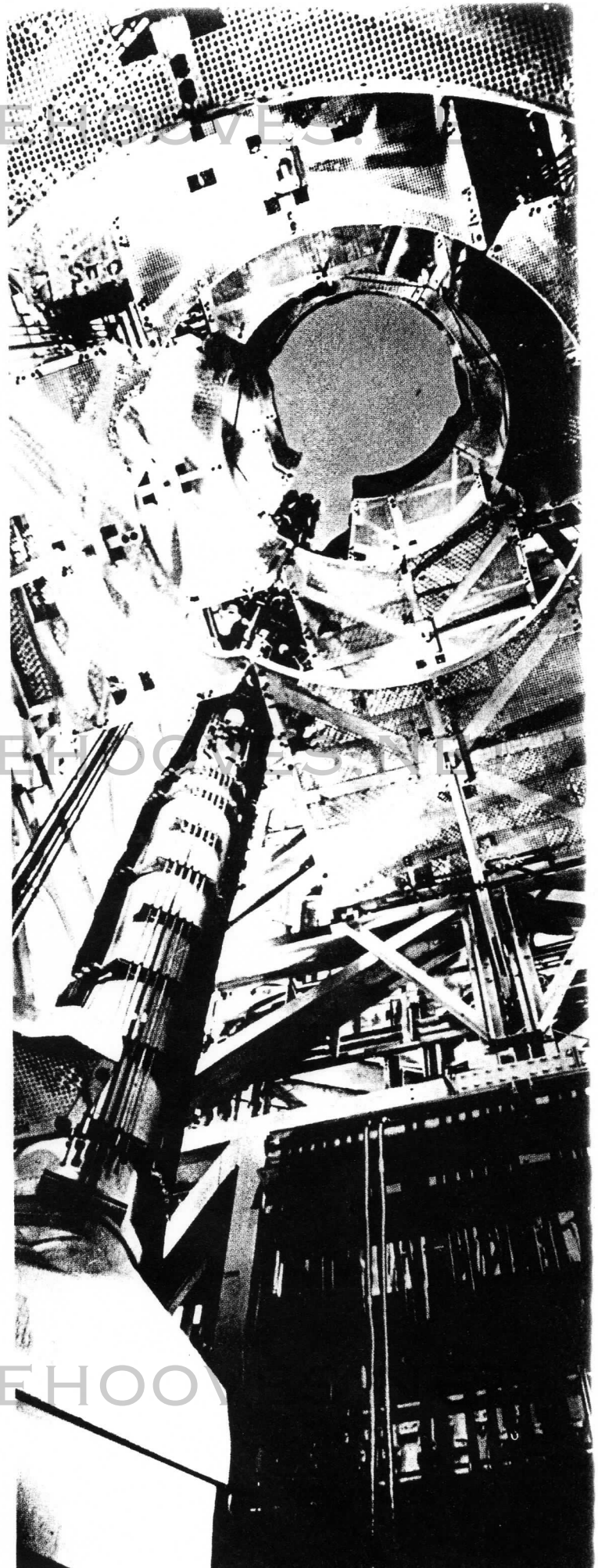
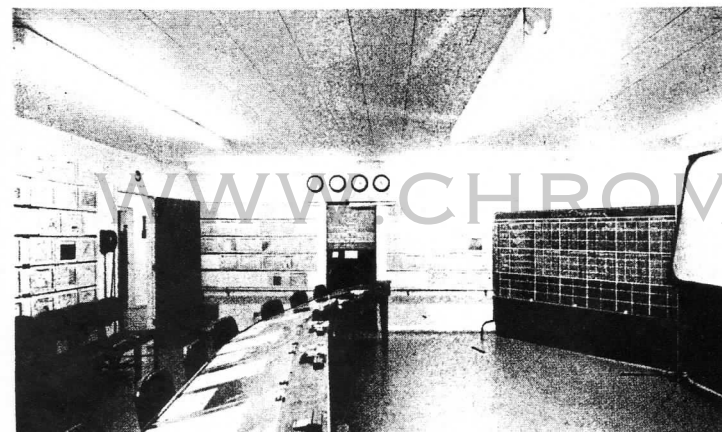
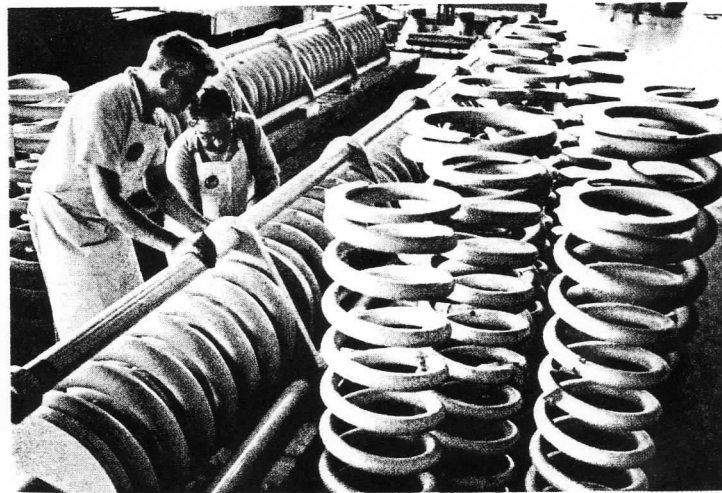
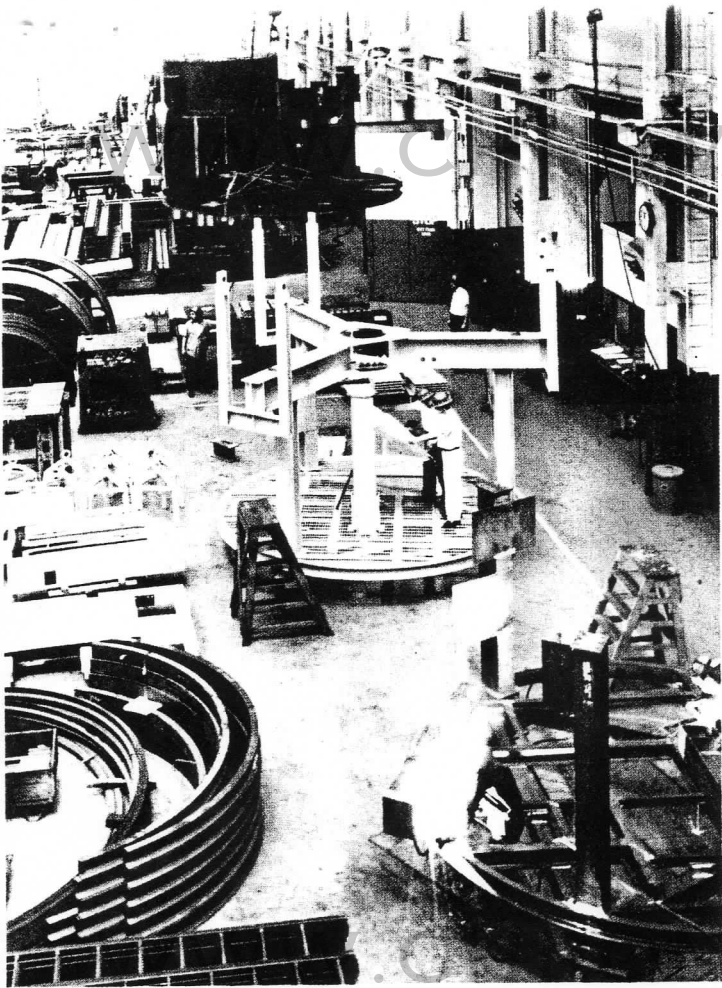


CHROMEHOOF 3

TITAN LAUNCHER AND EQUIPMENT TERMINAL

- 1 Crib structure and suspension system
- 2 Door system
- 3 Umbilical service lines and associated systems
- 4 Missile support and umbilical tower
- 5 Launcher platform
- 6 Launcher platform drive
- 7 Hydraulic, electrical, and utility distribution systems
- 8 Personnel access and safety features
- 9 Intersilo hydraulic and electrical connections
- 10 Hydraulic system
- 11 Electric power and control system
- 12 Fail Safe features



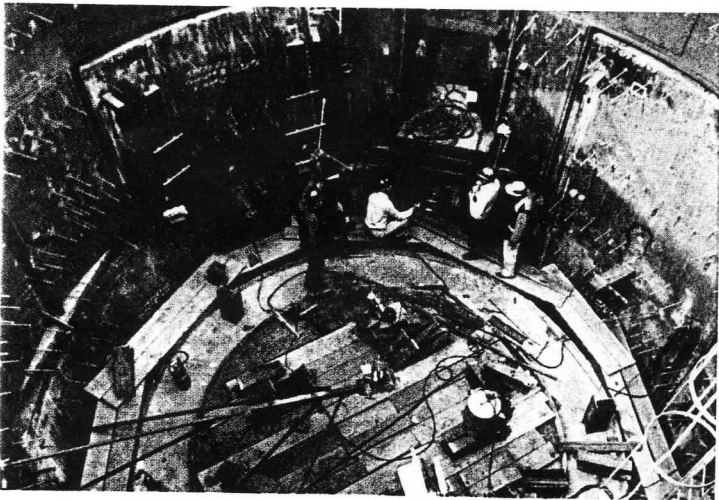




*Papers carried signs of greater things
to come,
Legends were plain, lines as clean
as blades
And all logistic men perted and accounted
clearly for their work.*



*The line to hardware was an amazing
course—
Once run it stood a strong American
beauty.*



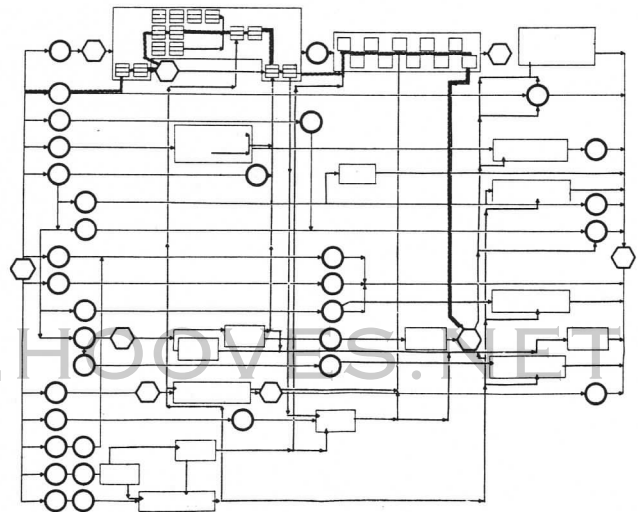
WWW.CHROMEHOOVES.NET



INSTALLATION AND TEST STATUS

LEGEND

- MAJOR AMP MILESTONE
- SYSTEM START
- SYSTEM COMPLETE
- ▭ PIC'S AND SYSTEMS TESTS
- PIC AND SYSTEMS TEST FLOW
- HARDWARE SYSTEMS FLOW



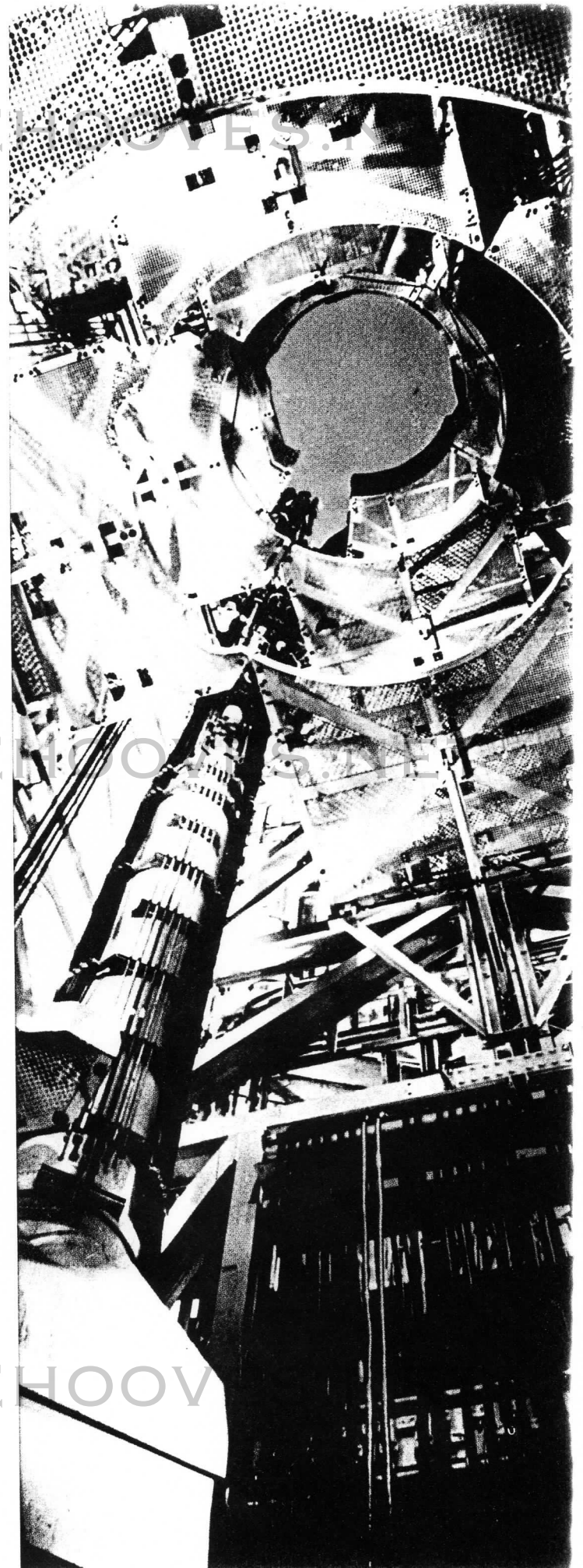
WWW.CHROMEHOOVES.NET

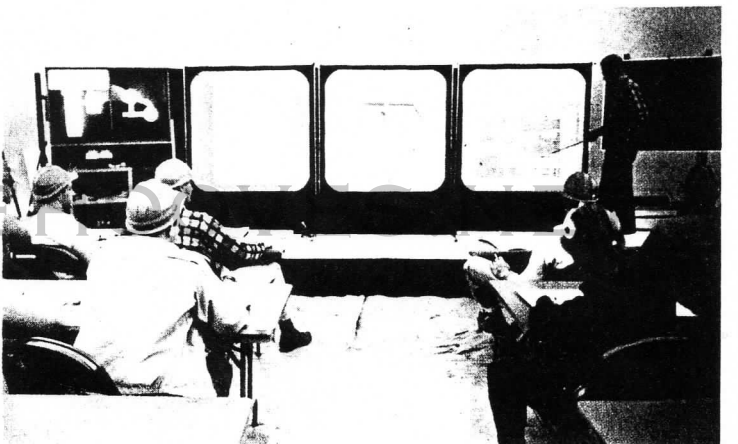
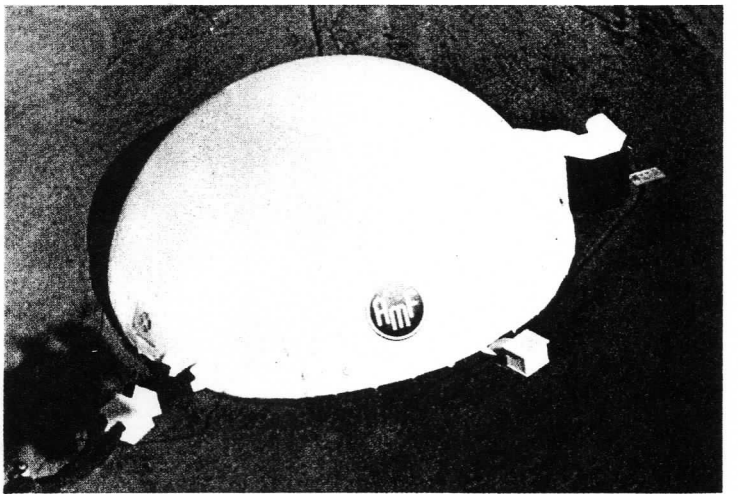
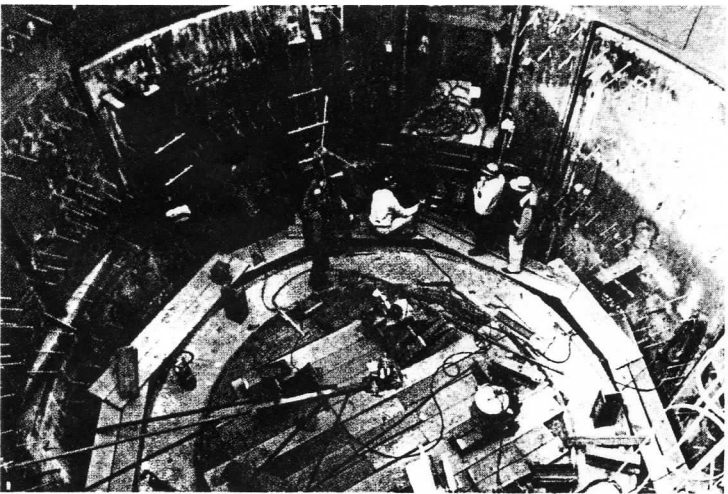
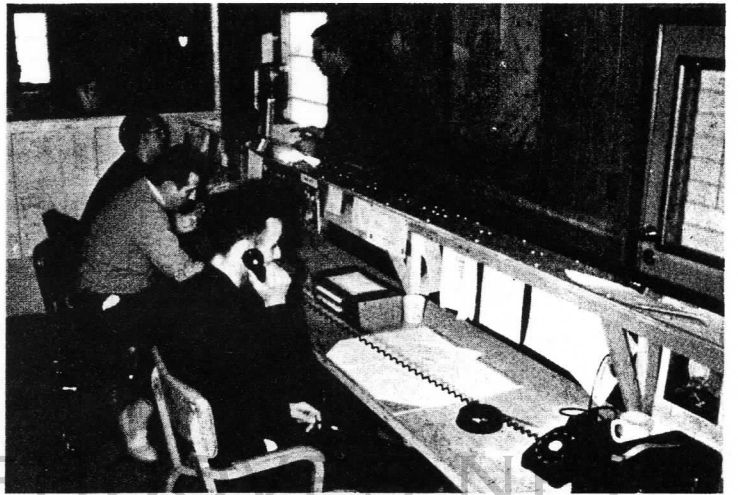
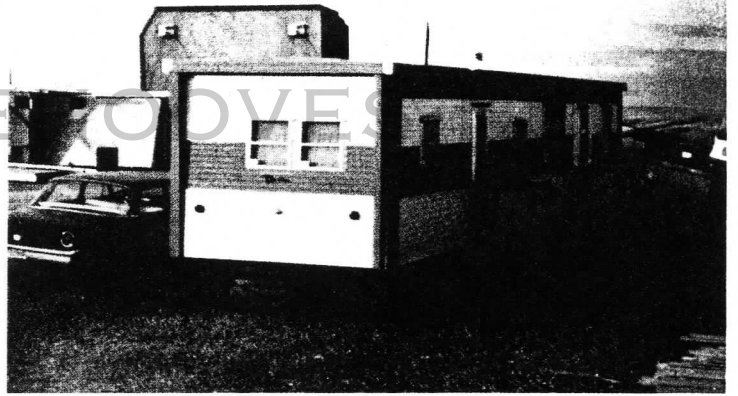
WWW.CHROMEHOOVES.COM

*Men of Harvard and other fields worked
with men of Hannibal,
Greenwich, Brooklyn, Denver, California.
Deep down they dwelt like miners
after gold
To learn a meaning of their country in
themselves.*

WWW.CHROMEHOOVES.COM

WWW.CHROMEHOOVES.COM





MEMORY FOR TOMORROW...

In late summer, 1962 the U.S. Air Force accepted the last TITAN I silo and aerospace launching equipment from AMF. In the largest project in its history to date, AMF was on schedule for the Nation— ahead of schedule by clock time and the promised time, too.

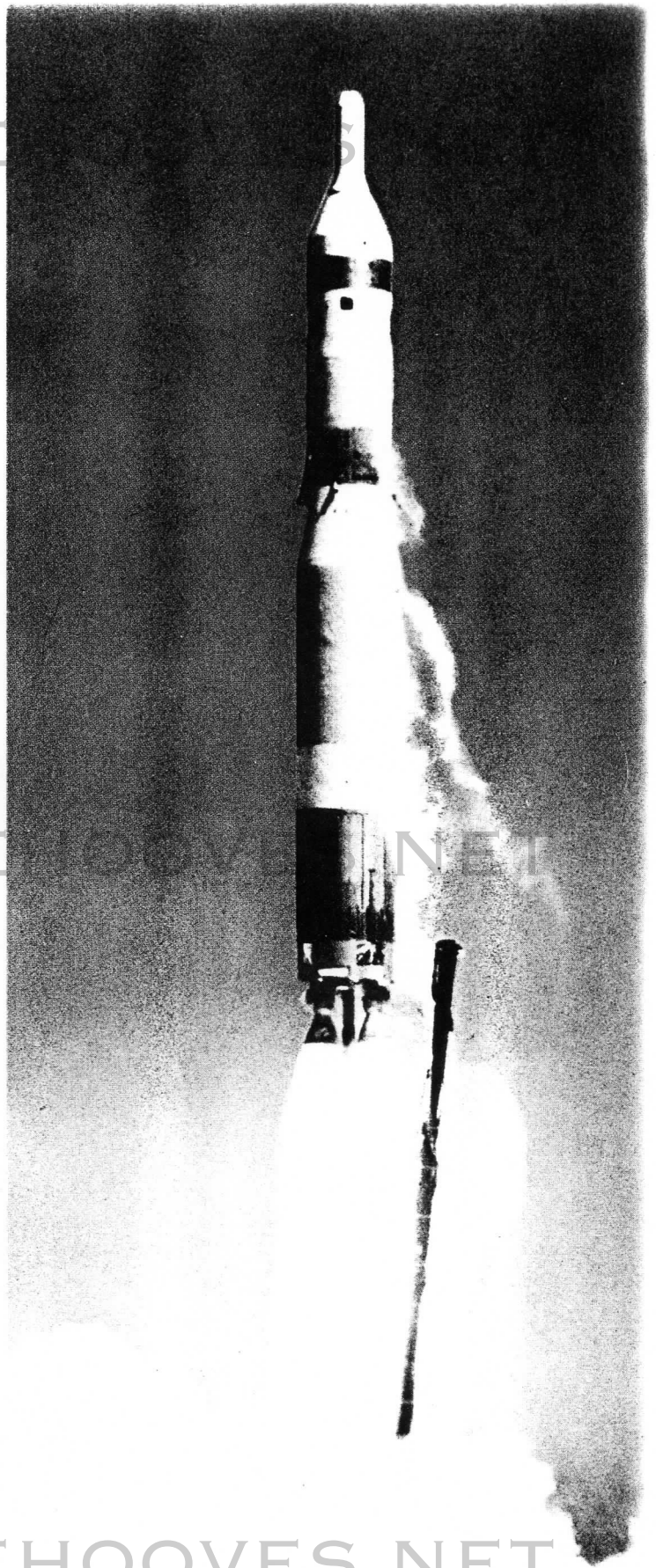
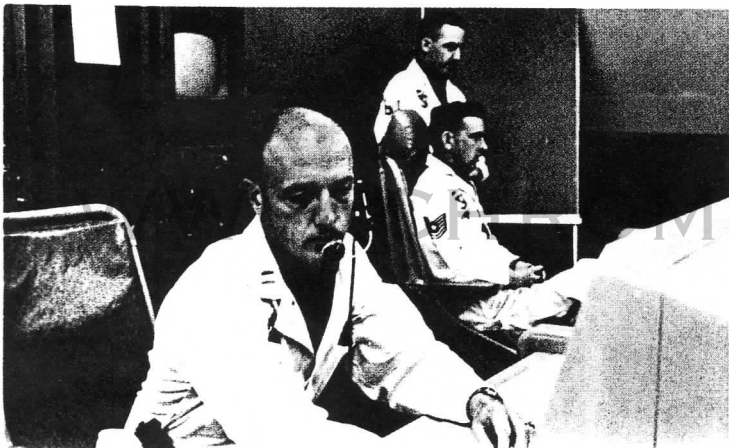
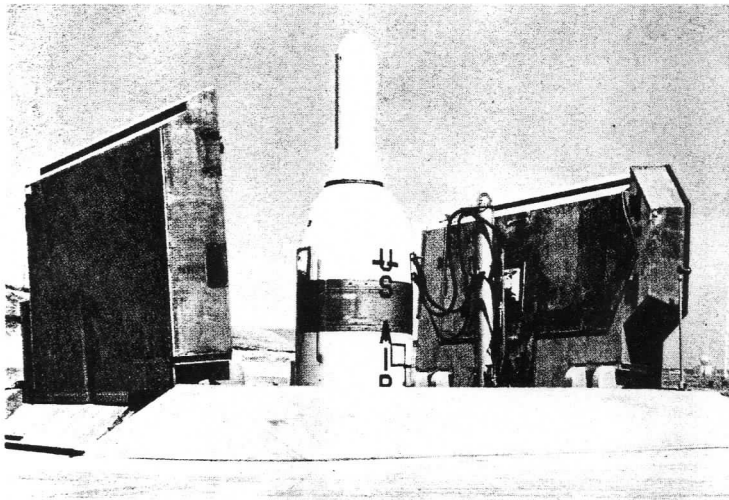
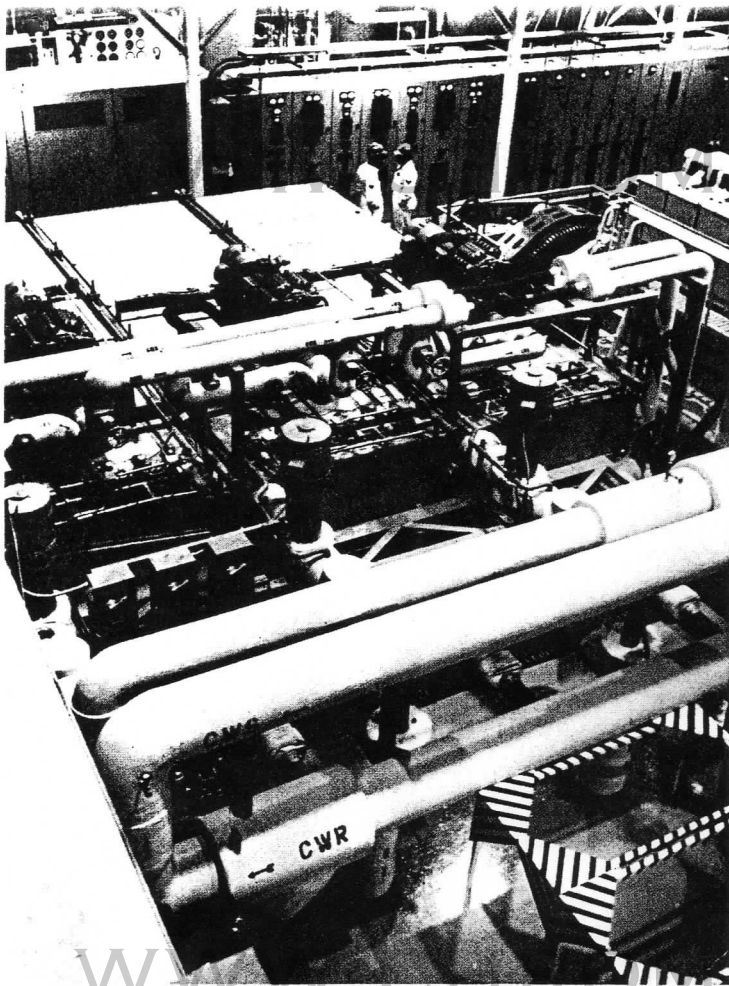
Every phase of the TITAN I experience of AMF has been codified for further use in a "Titan Memory Room" (above). In one area of the room, the specific record—the mistakes and the right ways— of Titan project milestones is on display (below).

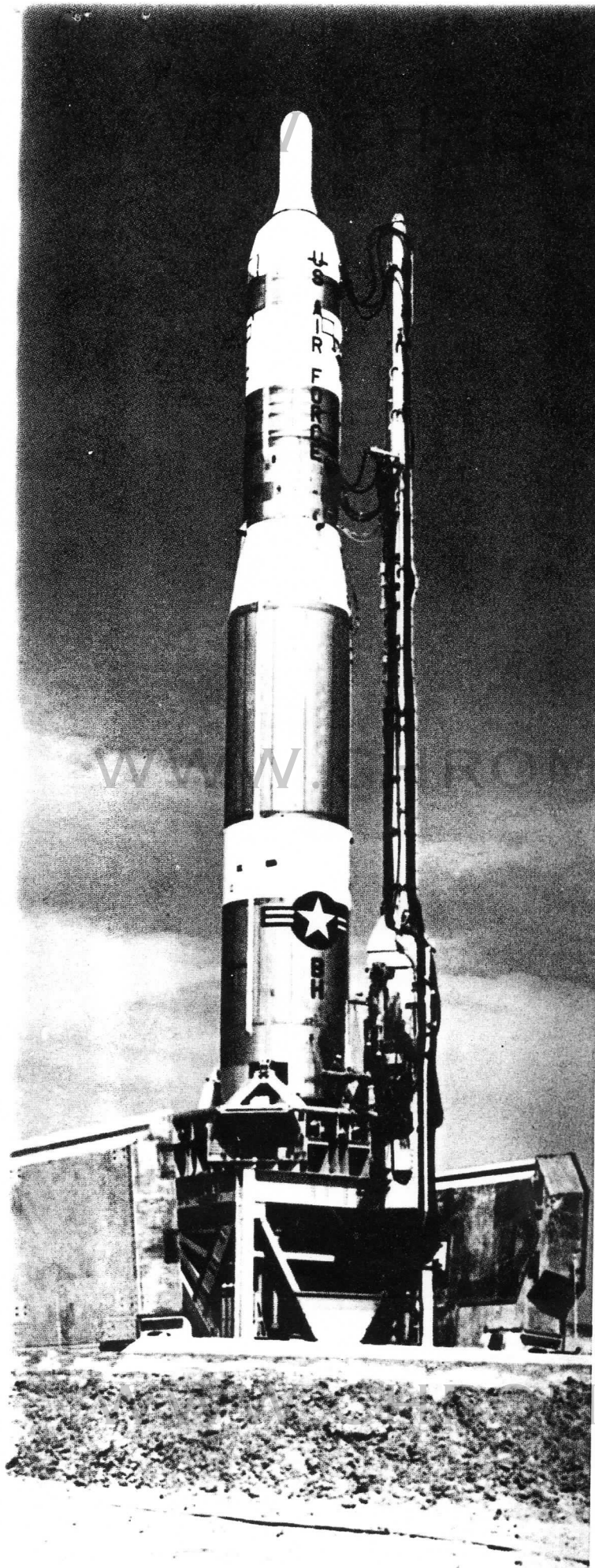
U.S. Air Force—AMF planning, programming, and an insistence on accuracy with speed all played a part in success. Most important, highly motivated people did the job. The new process of Air Force concurrency succeeded, and the Nation was better prepared to seek peace or defend liberty.



**AMERICAN MACHINE
& FOUNDRY COMPANY**

Executive Offices:
261 Madison Avenue, New York 16, N. Y.





*Americans built their Titan with a fire
of freedom burning
Americans remember . . .
Washington, Franklin, Hancock, Henry
would be proud.*

*"This one's for the land," the Hannibal
mason said
and cursed the cold and moved with pace
Americans remember . . .*

*"The land belongs to the people, the people
to the land,"
Harvard and his Greenwich associate
said to close the words.*

*Another course for freedom run
to hard reality and power now
remembered
And a Company named American
remembered, too.
Put all its knowledge in a memory room
for use again.*

WWW.CHROME

WWW.CHROME

*Tall and towering great the Titan
stood above,
Pointing high to the sky.*

*Below in mother earth they wait
In watchful cities hewn by American will.*

WWW.CHROMEHOOVES.NET

